

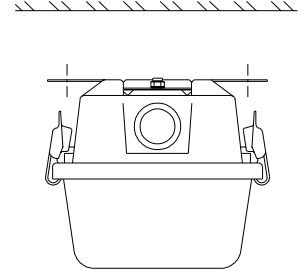


# SUGGESTED MOUNTING FOR L1 TUFF LITE

## **EXCEPT IP65 & IP67 Models**

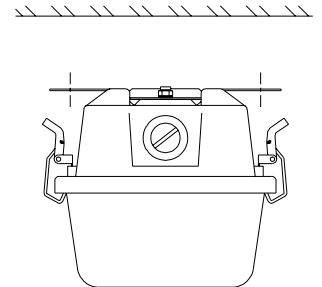
### **SURFACE**

1. Loosen nut securing mounting brackets. Rotate 90° to mounting position, and retighten nuts.
2. Mount to surface utilizing holes in mounting brackets.
3. Remove lens by opening latches.
4. Remove reflector by turning the two (2) quarter-turn fasteners.
5. Make all necessary wiring connections.
6. Replace reflector, lamp(s) and secure lens back to luminaire.



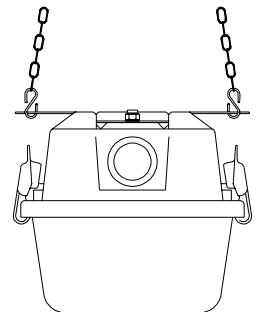
### **MARINE**

1. Loosen nut securing mounting brackets. Rotate 90° to mounting position, retighten nuts.
2. Mount to surface using holes in mounting brackets.
3. Remove lens by opening latches, allowing the lens to hang on safety snells.
4. Remove reflector by turning the two (2) quarter-turn fasteners.
5. Make all necessary wiring connections at terminal block.
6. Replace reflector, lamp(s) and secure lens back to luminaire.

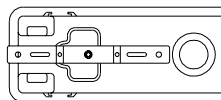


### **CHAIN**

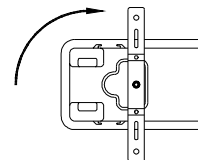
1. Loosen nut securing mounting brackets. Rotate 90° to mounting position, and retightening nuts.
2. Remove lens by opening latches.
3. Mount luminaire using "S" hooks inserted in holes in brackets. Mount to chains and close hooks.
4. Make all necessary wiring connections.
5. Replace reflector, lamp(s) and secure lens back to luminaire.



**Shipping  
Position**



**Mounting  
Position**



**Cleaning Instructions:** Wipe luminaire with a soft cloth slightly dampened with warm, soapy water. On stainless steel units, tightly adhering deposits may be removed by using a stainless steel polishing powder. Never use steel wool or steel brushes on stainless steel. Always rub in the directions of the polish lines.

**Note:** All luminaires to be installed by a qualified electrician.  
Mounting and electrical hardware not supplied by Paramount Industries unless otherwise noted.