



2x SURGICAL TECHNISEAL® APPLICATIONS:

- UL/CUL Listed Wet Location
- Cleanroom (Classes 100-100,000; ISO Classes 5-9)

BENEFITS:

- Designed specifically for supplementary Surgical Suite Illumination
- Luminaires adaptable to your specific needs

FEATURES:

- Premium electronic ballast standard
- Available in stainless steel construction
- Guardcraft® antimicrobial coating available
- Every luminaire tested with lamps to assure customer satisfaction
- 5 year limited warranty
- Proudly made in **USA**

SPECIFICATIONS:

HOUSING:

Constructed of nominal 20GA (.036) zinc coated steel for unmatched corrosion protection. Two welded, tapered, threaded flanges on the top provide a sealed wireway access. All seams are sealed with a long life acrylic sealant.

REFLECTOR:

Fabricated of zinc coated steel, painted with a minimum reflectance of 88%.

LENS FRAME:

Exclusively designed, heavy duty, extruded, anodized aluminum with stainless steel captive screws used to hold the lens frame tight to the housing. The frame is hinged for support while servicing.

GASKETING:

An extruded, ribbed vinyl gasket seals the lens into the frame; with our exclusive, mechanically held, extruded, silicone gasket used to seal the frame to the housing.

FINISH:

Painted surfaces are two mil white polyester enamel, special colors available.

ALSO AVAILABLE: Paramount's special Guardcraft® antimicrobial coating with nano silver technology to inhibit growth of bacteria on the coating surface. Silver nano particles approximately 1000 times smaller in diameter than a human hair are evenly dispersed throughout the coating to provide long term protection.

LENS:

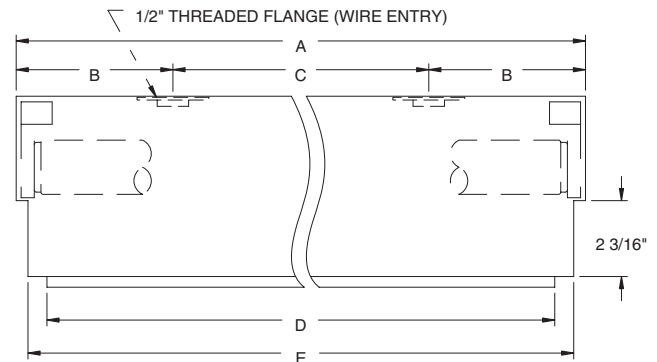
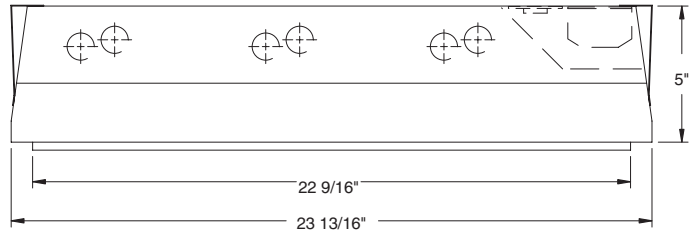
.150 extruded acrylic. Asymmetric/Symmetric distribution consisting of male cone prisms and linear elevating and depressing prisms, with radio frequency interference shielding. Complies with applicable government RFI specifications MIL-STD-461A, MIL-STD-462, MIL-STD-463

ELECTRICAL:

All ballasts and lampholders are UL Listed.

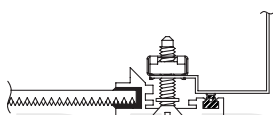
MOUNTING:

Grid or custom detail available.

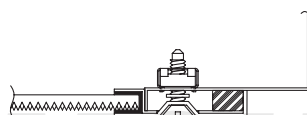


LENGTH	DIMENSIONS IN INCHES				
	A	B	C	D	E
2 FT	23 29/32	1 9/32	21 3/8	22 9/16	23 11/16
4 FT	47 29/32	4 31/32	38	46 3/8	47 11/16

LENS FRAME DETAILS:



ALUMINUM LENS FRAME DETAIL



STAINLESS STEEL LENS FRAME DETAIL

