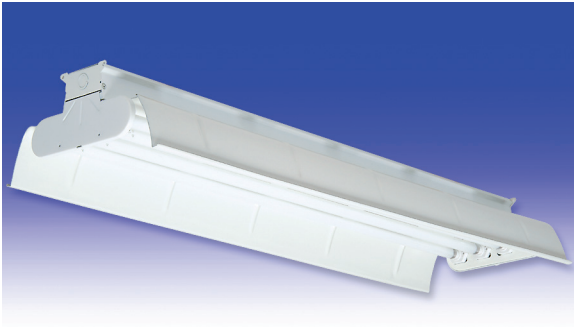




# M4/M6 Series

FLUORESCENT | SURFACE **S**



### CMC INDUSTRIAL APPLICATIONS:

- UL/CUL Listed Dry Location
- Industrial & Commercial

### BENEFITS:

- Luminaires adaptable to your specific needs

### FEATURES:

- Full 16" wide reflector
- 2 or 4 lamp configurations
- Patented reflector retaining spring latch
- Premium electronic ballast standard
- Every luminaire tested with lamps to assure customer satisfaction
- 5 year limited warranty
- Proudly made in **USA**

## SPECIFICATIONS:

### HOUSING:

Constructed of nominal 20GA (.036) zinc coated steel for unmatched corrosion protection. Knockouts on the ends and top of the luminaire provide wireway access.

### DIE FORMED REFLECTOR:

All reflectors feature deep ribs, embossed upright apertures, railed edges and reinforced mounting slots for durability. Available materials listed below by series.

**M4**- Zinc coated steel, painted white with 88% reflectance.

**M6**- Anodized aluminum with 70% reflectance.

### LIGHT CONTROL:

Uplight apertures provide 25% uplight. Optional square cell louver offers a 33° x 33° shielding.

### FINISH:

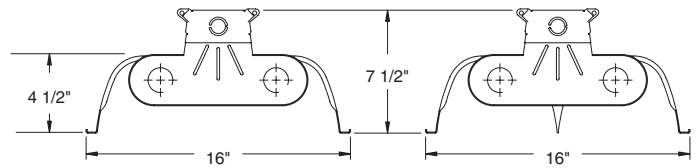
Painted surfaces are two mil of white polyester enamel.

### ELECTRICAL:

All ballasts and lampholders are UL Listed.

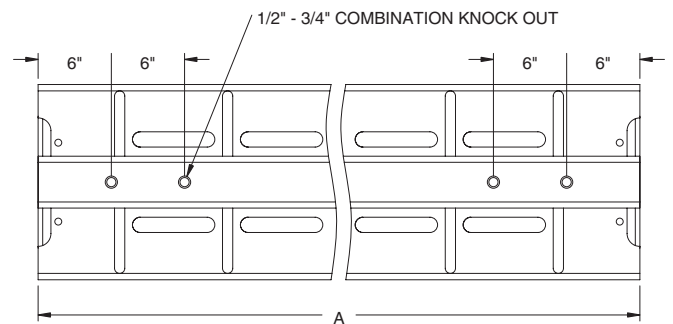
### MOUNTING:

Chain, surface, pendant or custom detail available.



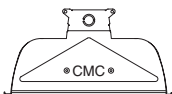
STANDARD CMC LUMINAIRE

CMC W/ CENTER V-REFLECTOR



LENGTH	DIM IN INCHES	
	A	
4 FT HO	48	3/4
4 FT RS	49	
8 FT HO	96	3/4
8 FT TDM RS	97	7/8

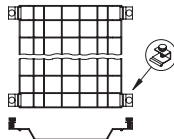
REFLECTOR END CAP -R1



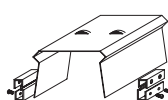
CENTER REFLECTOR "V" -R2



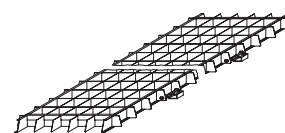
WIRE GUARD -J8



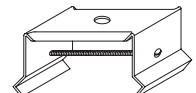
REFLECTOR ALIGNER BRACKET -M5



LOUVER -J7



ICE TONG MOUNTING HANGER -M4



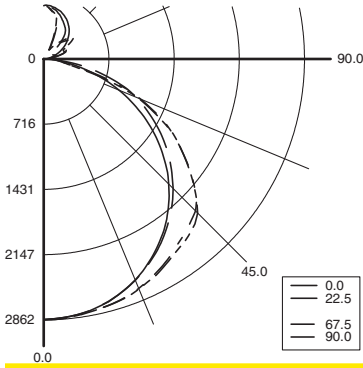


# M4/M6 Series



**PHOTOMETRICS:** For additional photometry, go to [paramountlighting.com](http://paramountlighting.com)

Model M44320, 4FT, Porcelain Reflector, 4 32W T8 Fluorescent Lamps, Lamp Lumen Rating = 3050



### Coefficients of Utilization, Zonal Cavity Method

Floor Cavity Reflectance: 20%

RC	.8				.7				.5				.3				.1				0
RW	.7	.5	.3	.1	.7	.5	.3	.1	.5	.3	.1	.5	.3	.1	.5	.3	.1	.5	.3	.1	0
R 0	99	99	99	99	96	96	96	96	89	89	89	82	82	82	77	77	77	74	74	74	74
C 1	90	86	83	79	87	83	80	77	78	75	72	72	70	68	67	66	64	62	62	62	62
R 2	82	75	69	64	79	72	67	62	67	63	59	63	59	56	59	56	53	51	51	51	51
3	74	65	58	53	71	63	57	52	59	54	49	55	51	47	51	48	45	42	42	42	42
4	68	58	50	44	65	56	49	43	52	46	42	49	44	40	46	41	38	36	36	36	36
5	62	51	43	38	60	50	42	37	46	40	36	43	38	34	41	36	33	31	31	31	31
6	57	46	38	33	55	44	37	32	42	35	31	39	34	30	37	32	28	26	26	26	26
7	53	41	34	28	51	40	33	28	38	31	27	35	30	26	33	29	25	23	23	23	23
8	49	37	30	25	47	36	30	25	34	28	24	32	27	23	30	26	22	20	20	20	20
9	46	34	27	22	44	33	27	22	31	25	21	30	24	21	28	23	20	18	18	18	18
10	43	31	25	20	41	31	24	20	29	23	19	27	22	19	26	21	18	16	16	16	16

### Zonal Lumen Summary

Zone	Lumens	% Lamp	% Luminaire
0-30	2270	18.6	21.6
0-40	3792	31.1	36.2
0-60	7048	57.8	67.2
0-90	9071	74.4	86.5
90-120	453	3.7	4.3
90-130	681	5.6	6.5
90-150	1038	8.5	9.9
90-180	1417	11.6	13.5
0-180	10488	86	100

Total Luminaire Optical Efficiency = 86.0%  
Spacing Criterion: 0° = 1.26, 90° = 1.37

## CMC INDUSTRIAL LUMINAIRE ORDERING INFORMATION:

SERIES	LAMP QTY	LAMP TYPE	0 LENS	OPTIONS	VOLTAGE
M4 Enamel M6 Anodized Aluminum	2 4 T4 Tandem T8 4 Tandem		0 Without lens (base)	<b>EMERGENCY (SPECIFY VOLTAGE)</b> <b>EMS</b> Bodine B70A DRY/IOTA I-48 DRY or similar <b>EM6</b> Bodine B50 DRY/IOTA I-320 DRY or similar <b>BALLASTS (SPECIFY VOLTAGE)</b> <b>D4</b> < 10% THD (Consult Factory) <b>E0</b> Low-Temp Electronic (N/A T12 RS & VHO) <b>E2</b> 2 Electronic Ballasts <b>E9</b> Rapid Start Electronic Ballast <b>FUSING</b> <b>F1</b> GLR/HLR Fusing (Fast) <b>F2</b> GMF/HLR Fusing (Slow) <b>LENSING</b> <b>J7</b> Louver <b>J8</b> Wire Guard <b>MOUNTING</b> <b>M4</b> Ice Tong Hangers <b>M5</b> Aligner Kits <b>MISC</b> <b>R1</b> Reflector End Caps <b>R2</b> V Reflector N/A In 4L RS <b>W4</b> Inboard Outboard Wiring (Dual Switching)	120V-277V/60Hz STD 347V/60Hz 50Hz & Other Voltages Available
	<b>32</b> F32T8 (4FT) 0° <b>48H</b> F48T12/HO (4FT) -20° <b>48T8H</b> F48T8/HO (4FT) -20° <b>96H</b> F96T12/HO (8FT) -20° <b>96T8</b> F96T8 (8FT) (59W) 50° <b>96T8H</b> F96T8/HO (8FT) -20° <b>TANDEM LAMPS</b> Tandem lamps are tandem wired <b>32</b> F32T8 (8FT) 0°				

Add hyphens between options

Other Wattages Available, Consult Factory.

**Project Information:**

Information subject to change without notice. Lamps supplied by others.

© 2010 Paramount Industries, Inc. P.O. Box 259 Crosswell, MI 48422