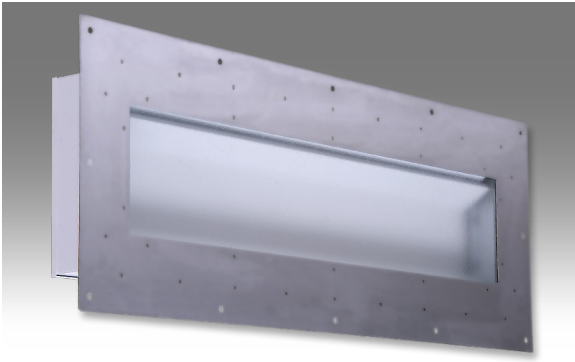




PBO 1x RA Series

FLUORESCENT | FLANGE 



1x BOOTH LITE APPLICATIONS:

- UL/CUL Listed Wet Location
- UL/CUL Hazardous Location (Class I, Division 2; Groups A,B,C & D Class II, Division 2; Groups F & G)
- UL Listed Hazardous Location Spray Booth

BENEFITS:

- Rear access
- Suitable for UL Class I, Div.2 and Class II, Div.2 locations
- Suitable for paint spray booths

FEATURES:

- Adjustable specular reflector system available
- Premium electronic ballast standard
- Every luminaire tested with lamps to assure customer satisfaction
- 5 year limited warranty
- Proudly made in **USA**

SPECIFICATIONS:

HOUSING:

Constructed of nominal 20GA (.036) zinc coated steel for unmatched corrosion protection. One welded, tapered, threaded hub provides a sealed wireway access. All seams are sealed with long life acrylic sealant.

REFLECTOR:

Fabricated of zinc coated steel, painted with a minimum reflectance of 88%.

OPTIONAL REFLECTOR SYSTEM:

Clear tempered glass lens (H6 option) and fully adjustable individual specular reflectors (R9 option) designed to independantly direct light from each lamp.

REAR ACCESS DOOR:

20GA (.036) zinc coated steel. Door is secured in place with captive screws. EPDM gasket seals door to housing. Two fold-down handles provide easy removal for servicing.

GASKETING:

Non-silicone gasket used to seal lens to mounting flange.

FINISH:

Painted surfaces are two mil of white polyester enamel.

LENS:

.187 Pattern 62 tempered glass held in place with continuous angles.

ELECTRICAL:

All ballasts and lampholders are UL Listed.

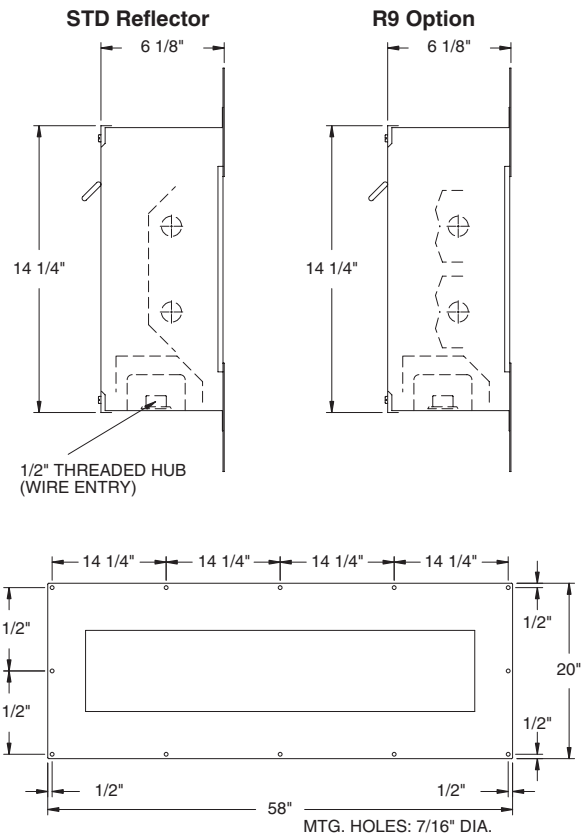
MOUNTING:

Supplied with 16GA (.060) stainless steel flange. 304 SS standard, 316 SS and other materials also available. Custom size flanges available. Contact Sales Representative for information.

TEMPERATURE CODE:

Class I, Div. 2= T4 (135°C); Class II, Div. 2= T3C (160°C)

(No fixture surface exposed to the hazardous atmosphere will exceed this temperature. Based on 40°C (104°F) ambient.)



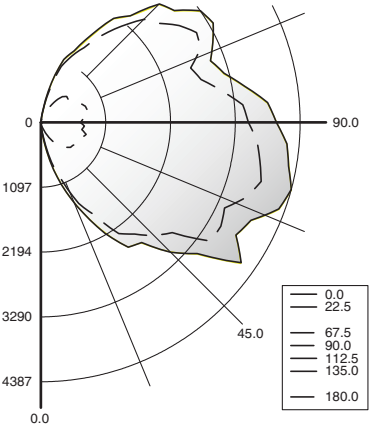
NOMINAL HOUSING DIMENSIONS IN INCHES		
LUMINAIRE	HOUSING	PANEL CUT-OUT SIZE
1 FT x 4 FT	14 1/4 x 48 1/4	16 1/4 x 50 3/4

PARAMOUNT INDUSTRIES, INC.

PBO 1x RA Series

PHOTOMETRICS: For additional photometry, go to paramountlighting.com

Model PB02329-H6-R9-RA, 4FT, Adjust. Specular Reflectors And Clear Tempered Glass Lens, 2 32W T8 Fluorescent Lamps, Lamp Lumen Rating = 2950



Coefficients of Utilization, Zonal Cavity Method

Floor Cavity Reflectance: 20%

RC	.8			.7			.5			.3			.1			0		
RW	.7	.5	.3	.1	.7	.5	.3	.1	.5	.3	.1	.5	.3	.1	.5	.3	.1	0
R 0	73	73	73	73	67	67	67	67	57	57	57	47	47	47	38	38	38	34
C 1	63	58	54	50	57	53	50	46	44	41	39	35	33	31	28	26	24	21
R 2	55	49	43	38	50	44	39	35	36	32	29	29	26	23	22	20	18	14
3	50	41	35	30	45	38	32	27	31	26	22	24	21	18	18	15	13	10
4	45	36	29	24	40	32	26	22	26	22	18	21	17	14	15	13	10	7
5	41	31	25	20	37	28	22	18	23	18	15	18	14	11	13	10	8	6
6	37	27	21	16	34	25	19	15	20	16	12	16	12	9	12	9	7	4
7	34	24	18	14	31	22	17	13	18	14	10	14	11	8	11	8	5	4
8	31	22	16	12	28	20	15	11	16	12	9	13	9	7	9	7	5	3
9	29	20	14	10	26	18	13	9	15	10	7	12	8	6	9	6	4	2
10	27	18	13	9	25	16	11	8	13	9	7	11	7	5	8	5	3	2

Zonal Lumen Summary

Zone	Lumens	% Lamp	% Luminaire
0-30	70	1	2
0-40	211	4	5
0-60	757	13	19
0-90	1989	34	50
90-120	1247	21	31
90-150	1952	33	49
90-180	2027	34	50
0-180	4016	68	100

Total Luminaire Optical Efficiency = 68%
Spacing Criterion: 0° = 19.03, 90° = 3.14

1x BOOTH LITE—REAR ACCESS ORDERING INFORMATION:

PBO SERIES	2 LAMP QTY	LAMP TYPE	9 LENS	RA ACCESS	OPTIONS	VOLTAGE
PBO Spray Paint Booth			9 .187 Tempered Glass (P62)		EMERGENCY (SPECIFY VOLTAGE) EM8 Bodine BHD65U T8 HAZ. LOC. BALLASTS (SPECIFY VOLTAGE) D4 < 10% THD (Consult Factory) E8 High Light Output 32W T8 Ballast E9 Rapid Start Electronic Ballast FUSING F1 GLR/HLR Fusing (Fast) F2 GME/HLR Fusing (Slow) LENSING H5 .156 C73 Tempered Glass H6 .187 Clear Tempered Glass MISC R5 Specular Aluminum Reflector R9 Adjustable Specular Aluminum Reflector System Add hyphens between options	120V-277V/60Hz STD 347V/60Hz 50Hz & Other Voltages Available
32 F32T8 (4FT) 0°						
48T8H F48T8/HO (4FT) -20°						

Information subject to change without notice. Lamps supplied by others.
© 2010 Paramount Industries, Inc. P.O. Box 259 Croswell, MI 48422

Hazardous Location:   

Project Information: