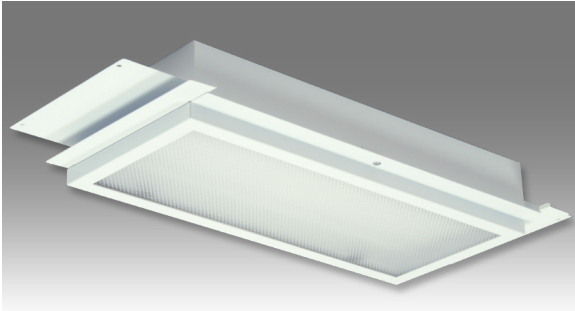




RF9/HF9 Series

FLUORESCENT | FLANGE 



DAMPA-STYLE 1x TROFFER APPLICATIONS:

- UL/CUL Listed IP-44
- UL Hazardous Location (Class I, Division 2; Groups A, B, C & D; Class II, Division 2; Groups F & G)
- UL Listed Marine (Inside)

BENEFITS:

- Luminaires adaptable to your specific needs

FEATURES:

- Carries an **IP 44 rating**
- Designed specifically for use with Dampa-style ceilings
- Premium electronic ballast standard
- Available in stainless steel construction
- Every luminaire tested with lamps to assure customer satisfaction
- 5 year limited warranty
- Proudly made in **USA**

SPECIFICATIONS:

HOUSING:

Constructed of nominal 20GA (.036) zinc coated steel for unmatched corrosion protection. All seams are sealed with a long life acrylic sealant.

LENS FRAME:

Constructed of nominal 18GA (.048) zinc coated steel for extra strength.

FINISH:

Painted surfaces are two mil of polyester enamel, to match standard Dampa ceiling.

LENS:

.140 extruded prismatic acrylic with 50% DR content for durability, smooth side out.

ELECTRICAL:

Utilizes a six gang VDE-approved terminal block for electrical connections. All ballasts and lampholders are UL Listed.

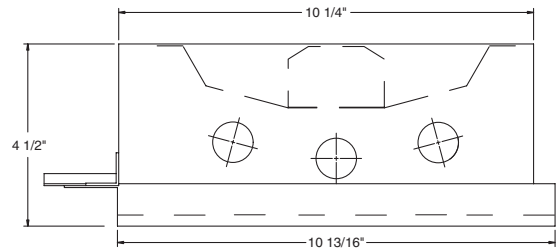
MOUNTING:

Available in standard, perpendicular or parallel mounting to fit Dampa ceiling applications. Mounting angles supplied for parallel and perpendicular application.

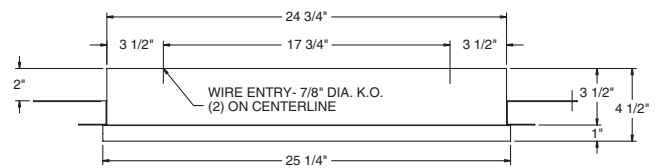
TEMPERATURE CODE:

Class I, Div. 2= T5 (100°C); Class II, Div. 2= T5 (100°C)

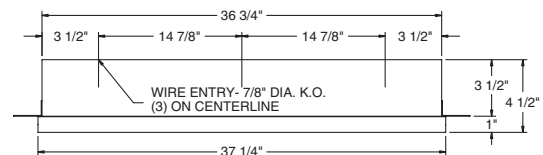
(No fixture surface exposed to the hazardous atmosphere will exceed this temperature. Based on 40°C (104°F) ambient.)



2FT LUMINAIRE

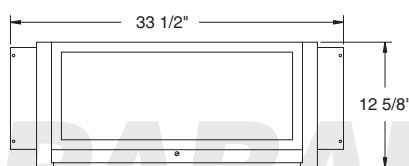


3FT LUMINAIRE

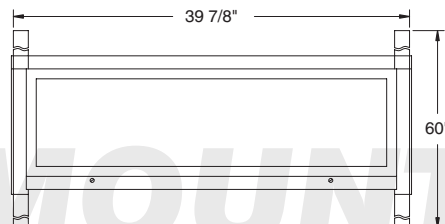


Dampa is a registered trademark of Dampa (USA) Inc.

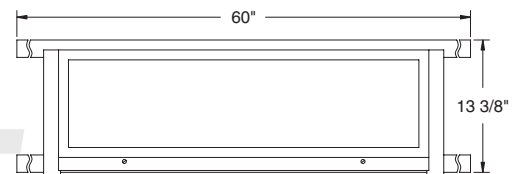
2FT STANDARD MOUNTING



3FT PERPENDICULAR MOUNTING



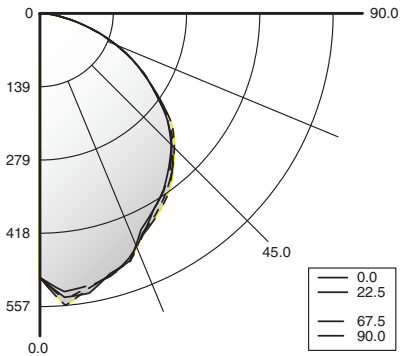
3FT PARALLEL MOUNTING



RF9/HF9 Series

PHOTOMETRICS: For additional photometry, go to paramountlighting.com

Model RF92174-835, 2 FT, White Reflector and Prismatic Acrylic Lens, 2 17W T8 Fluorescent Lamps, Lamp Lumen Rating = 1400



Coefficients of Utilization, Zonal Cavity Method

Floor Cavity Reflectance: 20%

RC	.8			.7			.5			.3			.1			0		
RW	.7	.5	.3	.1	.7	.5	.3	.1	.5	.3	.1	.5	.3	.1	.5	.3	.1	0
R 0	63	63	63	63	62	62	62	62	59	59	59	57	57	57	54	54	54	53
C 1	58	55	53	51	57	54	52	50	52	50	49	50	49	47	48	47	46	45
R 2	53	48	45	42	51	47	44	41	46	43	40	44	41	39	42	40	39	37
3	48	43	38	35	47	42	38	34	40	37	34	39	36	33	37	35	33	32
4	44	38	33	29	43	37	33	29	36	32	29	34	31	28	33	30	28	27
5	40	34	29	25	39	33	29	25	32	28	25	31	27	25	30	27	24	23
6	37	30	26	22	36	30	25	22	29	25	22	28	24	22	27	24	21	20
7	35	27	23	20	34	27	23	19	26	22	19	25	22	19	25	22	19	18
8	32	25	21	17	31	25	20	17	24	20	17	23	20	17	23	19	17	16
9	30	23	19	16	29	23	19	16	22	18	16	22	18	15	21	18	15	14
10	28	21	17	14	28	21	17	14	20	17	14	20	16	14	19	16	14	13

Zonal Lumen Summary

Zone	Lumens	% Lamp	% Luminaire
0-30	413	15	28
0-40	672	24	45
0-60	1189	42	80
0-90	1484	53	100
90-120	0	0	0
90-150	0	0	0
90-180	0	0	0
0-180	1485	53	100

Total Luminaire Optical Efficiency = 53.0%
Spacing Criterion: 0° = 1.27, 90° = 1.30

DAMPA-STYLE TROFFER ORDERING INFORMATION:

SERIES	LAMP QTY	LAMP TYPE	LENS	TYPE	OPT MAT	OPTIONS	VOLTAGE
HF9 Hazardous RF9 Marine Inside		2 .125 Clear Acrylic (No Pattern) 3 .125 White Acrylic 4 .140 Prismatic Acrylic (P12) (base) 6 .125 Clear Polycarbonate (No Pattern) 7 .125 White Polycarbonate 8 .156 Prismatic Polycarbonate (P12)		835 2/3L 2FT Standard Mount 835E 3L 3FT Perpendicular Mount 835F 3L 3FT Parallel Mount 835G 2L 2FT Parallel Mount		EM8 EMERGENCY (SPECIFY VOLTAGE) Bodine BHD65U T8 HAZ. LOC. D4 BALLASTS (SPECIFY VOLTAGE) < 10% THD (Consult Factory) E9 Rapid Start Electronic Ballast LENSING H2 .150 Extra Heavy Clear Acrylic H3 .150 Extra Heavy White Acrylic MISC P9 Special Paint Color (Provide Paint Code & Chip)	120V-277V/60Hz STD 347V/60Hz 50Hz & Other Voltages Available
17 F17T8 (2FT) 0° 25 F25T8 (3FT) 0°						Add hyphens between options	

*S3 Stainless Steel Exterior
 * Note:
 If Stainless Steel is ordered,
 304 SS Standard, 316
 SS and other materials
 available, consult agent.

Hazardous Location:

Project Information:

Information subject to change without notice. Lamps supplied by others.
 © 2010 Paramount Industries, Inc. P.O. Box 259 Croswell, MI 48422