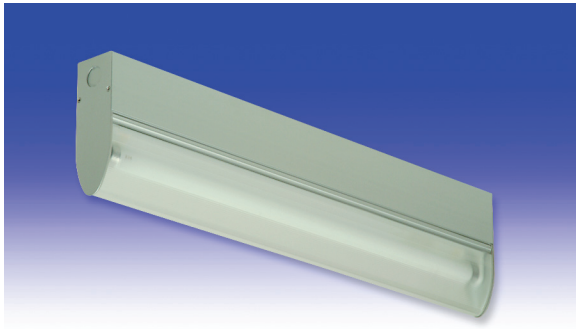


# A1 Series

**FLUORESCENT | SURFACE** 



**AEROLUX® APPLICATIONS:**

- UL/CUL Listed Dry Location
- Cleanroom (Classes 10-100,000; ISO Classes 4-9)

**BENEFITS:**

- Luminaires adaptable to your specific needs

**FEATURES:**

- Premium electronic ballast standard
- UV Filtering Lens up to 370 nanometers
- Available in stainless steel construction
- Every luminaire tested with lamps to assure customer satisfaction
- 5 year limited warranty
- Proudly made in **USA**

## SPECIFICATIONS:

**HOUSING:**

Constructed of heavy duty extruded, anodized aluminum. Wireway access can be provided in the back.

**REFLECTOR:**

Fabricated of aluminum, painted with a minimum reflectance of 88%.

**END CAPS:**

Die formed of anodized aluminum. Knock outs are provided at each end for wireway access.

**LENS:**

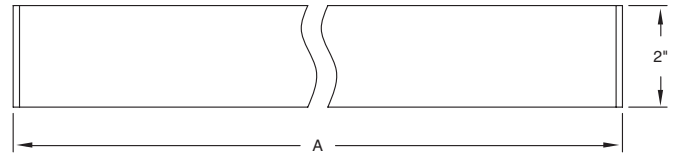
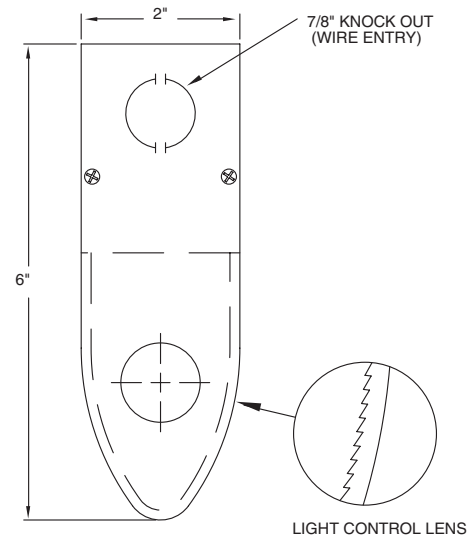
Smooth exterior light control lens utilizes longitudinal prisms to direct more available light to the room also reducing glare, lamp image and UV filtering.

**ELECTRICAL:**

All ballasts and lampholders are UL Listed.

**MOUNTING:**

Designed for HEPA filter grid ceiling, custom detail available.



**DIMENSIONS IN INCHES**

LENGTH	DIMENSIONS IN INCHES			
	Roto-loc Lampholders	Flex Loc® Lampholders (-Y6)	T5TT Lampholders	T5 Linear Roto-loc Lampholders
	A	A	A	A
13.5"	—	—	13 9/16	—
15.5"	—	—	15 9/16	—
19"	—	—	19 1/16	—
2 FT	24 3/8	25 1/16	24 5/16	23 7/16
3 FT	36 3/8	37 1/16	—	—
4 FT	48 3/8	49 1/16	48 5/16	47 1/16

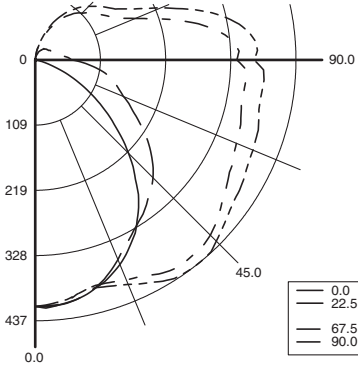


# A1 Series



**PHOTOMETRICS:** For additional photometry, go to [paramountlighting.com](http://paramountlighting.com)

Model A11325-Y6, 4FT, White Reflector and Light-controlled Acrylic Lens, 1 32W T8 Fluorescent Lamp, Lamp Lumen Rating = 3050



### Coefficients of Utilization, Zonal Cavity Method

Floor Cavity Reflectance: 20%

RC	.8												.7												.5												.3												.1												0											
RW	.7	.5	.3	.1	.7	.5	.3	.1	.5	.3	.1	.5	.3	.1	.5	.3	.1	.5	.3	.1	.5	.3	.1	.5	.3	.1	.5	.3	.1	.5	.3	.1	.5	.3	.1	.5	.3	.1	.5	.3	.1	.5	.3	.1																												
R 0	92	92	92	92	88	88	88	88	79	79	79	71	71	71	64	64	64	61	61	61	51	49	47	43	39	37	34	30	27	22	19	17	14	12	11	11	10	9	8	7	6	5	4	3																												
C 1	81	75	71	66	76	71	67	63	64	60	57	57	54	52	51	49	47	43	39	37	34	30	27	22	19	17	14	12	11	11	10	9	8	7	6	5	4	3	2	1	1																															
R 2	72	64	57	51	68	60	54	49	54	49	45	48	44	41	43	39	37	34	30	27	22	19	17	14	12	11	11	10	9	8	7	6	5	4	3	2	1	1	1	1	1																															
3	65	55	47	41	61	52	45	40	47	41	36	41	37	33	37	33	30	27	22	19	17	14	12	11	10	9	8	7	6	5	4	3	2	1	1	1	1	1	1	1	1																															
4	59	48	40	34	55	46	38	33	41	35	30	36	31	27	32	28	25	22	19	17	14	12	11	10	9	8	7	6	5	4	3	2	1	1	1	1	1	1	1	1	1																															
5	54	42	35	29	51	40	33	28	36	30	25	32	27	23	29	24	21	19	17	14	12	11	10	9	8	7	6	5	4	3	2	1	1	1	1	1	1	1	1	1	1																															
6	49	38	30	25	46	36	29	24	32	26	22	29	24	20	26	21	18	16	14	12	11	10	9	8	7	6	5	4	3	2	1	1	1	1	1	1	1	1	1	1	1																															
7	46	34	27	21	43	32	25	20	29	23	19	26	21	17	23	19	16	14	12	11	10	9	8	7	6	5	4	3	2	1	1	1	1	1	1	1	1	1	1	1	1																															
8	42	31	24	19	40	29	23	18	26	21	17	24	19	15	21	17	14	12	11	10	9	8	7	6	5	4	3	2	1	1	1	1	1	1	1	1	1	1	1	1	1																															
9	39	28	21	16	37	27	20	16	24	19	15	22	17	14	20	15	12	11	10	9	8	7	6	5	4	3	2	1	1	1	1	1	1	1	1	1	1	1	1	1	1																															
10	37	26	19	15	35	25	18	14	22	17	13	20	15	12	18	14	11	10	9	8	7	6	5	4	3	2	1	1	1	1	1	1	1	1	1	1	1	1	1	1	1																															

### Zonal Lumen Summary

Zone	Lumens	% Lamp	% Luminaire
0-30	325	10.7	13.0
0-40	557	18.2	22.2
0-60	1095	35.9	43.8
0-90	1857	60.9	74.2
90-120	461	15.1	18.4
90-130	534	17.5	21.3
90-150	622	20.4	24.9
90-180	645	21.2	25.8
0-180	2502	82	100

Total Luminaire Optical Efficiency = 82.0%  
Spacing Criterion: 0° = 1.20, 90° = 1.61

## AEROLUX® LUMINAIRE ORDERING INFORMATION:

A1 SERIES		LAMP QTY	LAMP TYPE	5 LENS	OPTIONAL MATERIAL	OPTIONS	VOLTAGE
A1	Dry Location	1 Standard 2 T5 only T2 Tandem		5 Light Control Acrylic		<b>EMERGENCY (SPECIFY VOLTAGE)</b> <b>EM5</b> Bodine B70A DRY/IOTA I-48 DRY or similar <b>EM6</b> Bodine B50 DRY/IOTA I-320 DRY or similar <b>BALLASTS (SPECIFY VOLTAGE)</b> <b>D4</b> < 10% THD (Consult Factory) <b>E0</b> Low-Temp Electronic (N/A T12 RS & VHO) <b>E9</b> Rapid Start Electronic Ballast <b>FUSING</b> <b>F1</b> GLR/HLR Fusing (Fast) <b>F2</b> GMF/HLR Fusing (Slow) <b>MISC</b> <b>J0</b> Lamp Sleeve (Specify Type & Color) <b>M1</b> Pendant Mount (Pendants By Others) <b>P9</b> Special Paint Color (Provide Paint Code & Chip) <b>R5</b> Specular Aluminum Reflector <b>S1</b> Special Material (Specify) <b>Y6</b> Flex-Loc® Lamp Holder (Med Bi-Pin Only: T8, T12) Add hyphens between options	120V-277V/60Hz STD 347V/60Hz 50Hz & Other Voltages Available
18BX	F18T5TT (13")	0°					
27BX	F24-F27T5TT (16")	0°					
39BX	F36-F39T5TT (19")	0°					
40BX	F40T5TT (2FT)	0°					
50BX	F50T5TT (2FT)	0°					
14T5	F14T5 (23")	0°					
17	F17T8 (2FT)	0°					
25	F25T8 (3FT)	0°					
28T5	F28T5 (47")	0°					
32	F32T8 (4FT)	0°					
54T5H*	F54T5/HO (4FT) N/A 2L	0°					
<b>TANDEM LAMPS</b>							
Tandem lamps are tandem wired							
40BX	F40T5TT (4FT)	0°					

\*S3 Stainless Steel Exterior  
\* Note: If Stainless Steel is ordered, 304 SS Standard 316 SS and other materials available, consult agent.

\* 2 Lamp Not Available With HO Lamps

Other Wattages and Lengths Available, Consult Factory.

**Project Information:**

Information subject to change without notice. Lamps supplied by others.

© 2010 Paramount Industries, Inc. P.O. Box 259 Crosswell, MI 48422