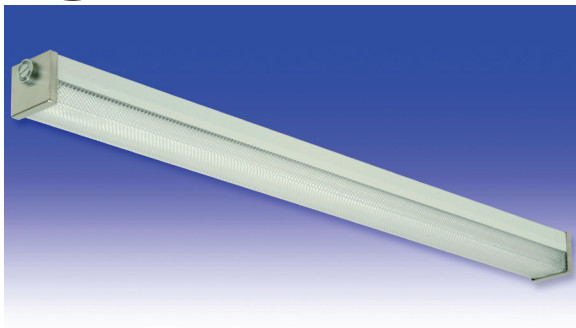


C7 Series

FLUORESCENT | SURFACE S



CRAFT LITE®

APPLICATIONS:

- UL/CUL Listed Wet Location
- NSF Certified Food Processing (Splash Zone, Food Zone)
- Industrial & Commercial
- UL Listed Marine (Inside, Inside Drip-Proof)
- Transit

BENEFITS:

- Luminaires adaptable to your specific needs

FEATURES:

- Linear T5 Lamp Technology
- Available in Stainless Steel construction
- Premium electronic ballast standard
- Every luminaire tested with lamps to assure customer satisfaction
- 5 year limited warranty
- Proudly made in **USA**

SPECIFICATIONS:

HOUSING:

Constructed of 20GA (.036) zinc coated steel for unmatched corrosion protection. Featuring a double channel, one welded inside the other, with space between the channel sides to capture the diffuser. Threaded hubs are continuously welded into the channel ends providing a sealed wireway access. Removable plugs seal the hubs when not utilized.

Food Zone: All external metal components of stainless steel (S3 option std).

OPTIONAL PREMIUM MATERIALS:

- S2** - 304 stainless steel outer channel.
- S3** - External metal components of 304 stainless steel.
- S4** - All metal components of 304 stainless steel.

REFLECTOR:

Fabricated of zinc coated steel, painted with a minimum reflectance of 88%.

END CAPS:

Formed of 18GA (.048) stainless steel. A threaded, knurled ring secures the end cap to the luminaire housing. End caps secure lens.

GASKETING:

EPDM is used in the housing channels and end caps.

FINISH:

Painted surfaces are two mil white polyester enamel, special colors available.

LENS:

One piece nominal .156 prismatic polycarbonate.

ELECTRICAL:

All ballasts and lampholders are UL Listed.

Marine: Utilizes a three gang terminal block for electrical connections.

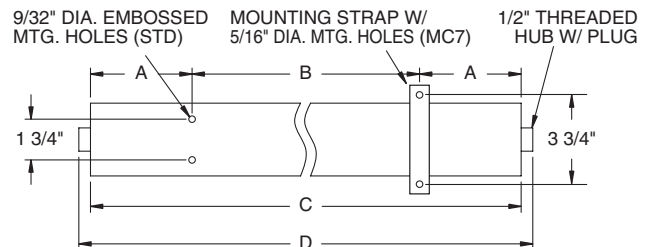
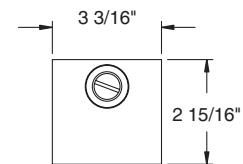
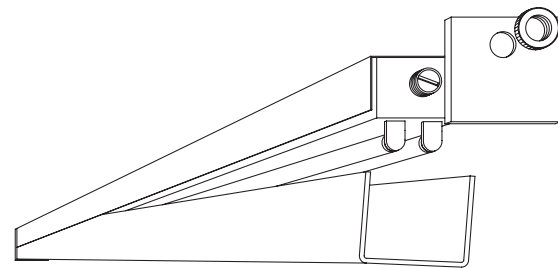
MOUNTING:

Surface, chain, or pendant options available
for covered ceiling installations.

Continuous row luminaires manufactured with aligning pins and utilize joiner bands. For further information, contact Sales Representative.

Splash and Food Zone: Surface for covered ceiling installations only.

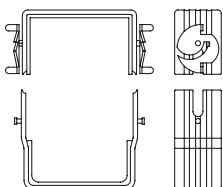
Marine: Surface for covered ceiling installations only.



1/2" THREADED FLANGE (OPTIONAL)

LENGTH	DIMENSIONS IN INCHES			
	A	B	C	D
2FT T5	3 5/16	16	22 5/8	23 3/4
3FT T5	9 5/16	16	34 5/8	35 3/4
4FT T5	7 1/8	32	46 1/4	47 3/8

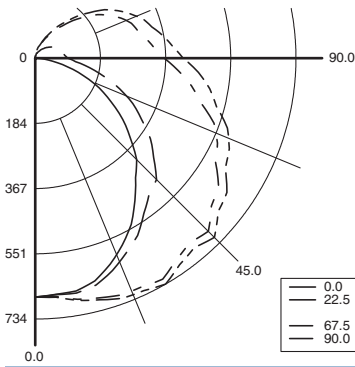
C7 JOINER BAND





PHOTOMETRICS: For additional photometry, go to paramountlighting.com

Model C7228T58, 4FT, Specular Reflector and Prismatic Polycarbonate Lens, 2 28W T5 Fluorescent Lamps, Lamp Lumen Rating = 2900



Coefficients of Utilization, Zonal Cavity Method

Floor Cavity Reflectance: 20%

RC	.8				.7				.5				.3				.1				0
RW	.7	.5	.3	.1	.7	.5	.3	.1	.5	.3	.1	.5	.3	.1	.5	.3	.1	.5	.3	.1	0
R 0	73	73	73	73	70	70	70	70	63	63	63	58	58	58	52	52	52	50	50	50	50
C 1	64	61	57	54	61	58	55	52	52	50	47	47	45	43	43	41	40	37	37	37	37
R 2	58	52	46	42	55	49	44	41	44	41	37	40	37	34	36	34	32	29	29	29	29
3	52	45	39	34	49	42	37	33	38	34	30	35	31	28	31	28	26	24	24	24	24
4	47	39	33	28	45	37	31	27	34	29	25	30	26	23	27	24	22	20	20	20	20
5	43	34	28	24	41	33	27	23	30	25	21	27	23	20	24	21	18	16	16	16	16
6	40	31	25	20	37	29	24	20	27	22	18	24	20	17	22	18	16	14	14	14	14
7	37	28	22	18	35	26	21	17	24	19	16	22	18	15	20	16	14	12	12	12	12
8	34	25	19	15	32	24	19	15	22	17	14	20	16	13	18	15	12	11	11	11	11
9	32	23	17	14	30	22	17	13	20	15	12	18	14	12	17	13	11	9	9	9	9
10	29	21	16	12	28	20	15	12	18	14	11	17	13	10	15	12	10	8	8	8	8

Zonal Lumen Summary

Zone	Lumens	% Lamp	% Luminaire
0-30	561	9.7	15.0
0-40	947	16.3	25.3
0-60	1845	31.8	49.3
0-90	2910	50.2	77.7
90-120	584	10.1	15.6
90-130	699	12	18.7
90-150	811	14	21.6
90-180	833	14.4	22.3
0-180	3744	64.5	100

Total Luminaire Optical Efficiency = 64.5%
Spacing Criterion: 0° = 1.19, 90° = 1.59

CRAFT LITE® LUMINAIRE ORDERING INFORMATION:

SERIES	LAMP QTY	LAMP TYPE	LENS	OPT MATERIAL	OPTIONS	VOLTAGE
C7 Wet Location SC7 Splash Zone FC7 Food Zone RC7 Marine Inside MC7 Inside Drip-proof	1 2		6 .125 Clear Polycarbonate (No Pattern) 7 .125 White Polycarbonate 8 .156 Prismatic Polycarbonate (P12) (base)		EMERGENCY (SPECIFY VOLTAGE) EM1 Bodine LP500 DRY/IOTA ISL28 DRY or similar EM7 Bodine LP550 DRY/IOTA ISL-54 DRY or similar FUSING F1 GLR/HLR Fusing (Fast) F2 GMF/HLR Fusing (Slow) LENSING J8 Wire Guard (N/A Splash/Food Zones) MOUNTING M1 Pendant Mount (Pendants by Others) M2 Mounting Bracket Kit (Surface / Chain) M3 In-Row (Row Information Required) M6 Angled Mounting Bracket (Consult Agent) M9 Wall Mounting MISC P9 Special Paint Color (Provide Paint Code & Chip) R5 Specular Aluminum Reflector S1 Special Material (Consult Agent) T3 Tamper Resistant T6 Screw-on End Caps W5 Rear Wire Entry (Consult Factory)	120V-277V/60Hz STD 347V/60Hz 50Hz & Other Voltages Available

*S2 Stainless Steel Outer Channel
 *S3 Stainless Steel Exterior
 *S4 Stainless Steel Complete
 * Note:
 If Stainless Steel is ordered,
 304 SS Standard
 316 SS and other materials
 available, consult agent.

INDIVIDUAL UNITS STANDARD.

Other Wattages and Lengths Available, Consult Factory.

NSF Food Processing Note:

Food Zone (F prefix) luminaires come in DIRECT CONTACT with food. Splash Zone (S prefix) units may become soiled, but are outside the danger of recontamination.

Information subject to change without notice. Lamps supplied by others.

© 2010 Paramount Industries, Inc. P.O. Box 259 Crosswell, MI 48422

Project Information: