



G3 Rear Access Series

FLUORESCENT | GRID 



1x TECHNISEAL® APPLICATIONS:

- UL/CUL Listed Wet Location
- Cleanroom
(Classes 100-100,000; ISO Classes 5-9)
- UL/CUL Hazardous Location
(Class I, Division 2; Groups A, B, C & D
Class II, Division 2; Groups F & G)
- NSF Certified Food Processing
(Splash Zone, Food Zone)
- Industrial & Commercial
- UL Listed Marine
(Inside, Inside Drip-Proof)
- Transit

BENEFITS:

- Luminaires adaptable to your specific needs
- Accessible from rear or front for servicing

FEATURES:

- Premium electronic ballast standard
- Available in stainless steel construction
- Every luminaire tested with lamps to assure customer satisfaction
- 5 year limited warranty
- Proudly made in **USA**

SPECIFICATIONS:

HOUSING:

Constructed of nominal 20GA (.036) zinc coated steel for unmatched corrosion protection. Two welded, tapered, threaded flanges on the top provide a sealed wireway access. All seams are sealed with a long life acrylic sealant.

Food Zone: All external metal components of stainless steel (S3 option std).

REFLECTOR:

Fabricated of zinc coated steel, painted with a minimum reflectance of 88%.

LENS FRAME:

Exclusively designed, heavy duty, extruded, anodized aluminum with stainless steel captive screws used to hold the lens frame tight to the housing. The frame is hinged for support while servicing.

Food Zone: All external metal components of stainless steel (S3 option std).

GASKETING:

An extruded, ribbed vinyl gasket seals the lens into the frame; with our exclusive, mechanically held, extruded, silicone gasket used to seal the frame to the housing.

Food Zone: Silicone sealant is used to seal the lens into the frame, with extruded EPDM sealing the frame to the housing.

FINISH:

Painted surfaces are two mil white polyester enamel, special colors available.

LENS:

.140 extruded prismatic acrylic with 50% DR content for durability, smooth side out.

Food Zone: .156 extruded prismatic polycarbonate, smooth side out.

ELECTRICAL:

All ballasts and lampholders are UL Listed.

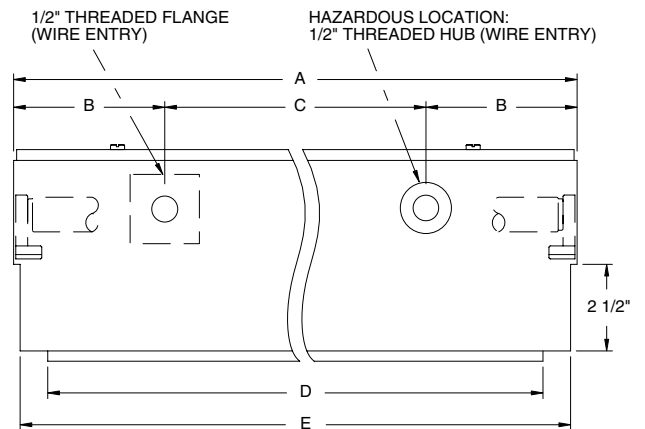
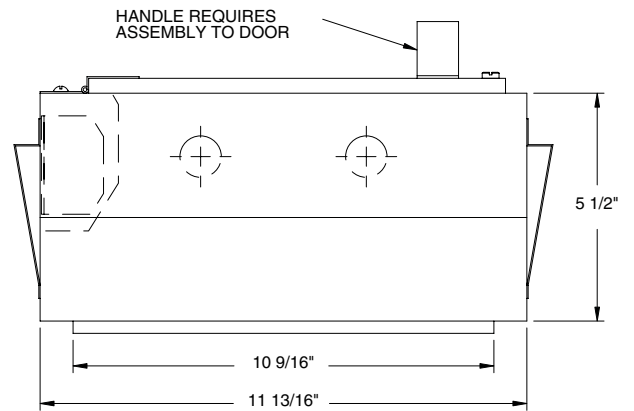
Marine: Utilizes a three gang terminal block for electrical connections.

MOUNTING:

Grid or custom detail available.

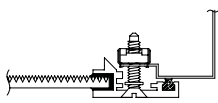
TEMPERATURE CODE:

Class I, Div. 2= T5 (100°C); Class II, Div. 2= T5 (100°C)

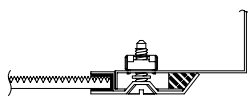


LENGTH	DIMENSIONS IN INCHES				
	A	B	C	D	E
2 FT	23 15/16	1 31/32	20	22 3/4	23 11/16
3 FT	35 15/16	1 31/32	32	34 1/2	35 11/16
4 FT	47 15/16	1 31/32	44	46 1/2	47 11/16

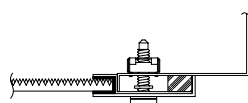
LENS FRAME DETAILS:



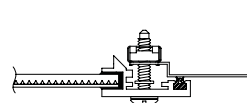
ALUMINUM LENS FRAME DETAIL



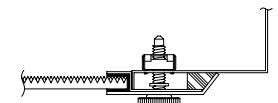
STAINLESS STEEL LENS FRAME DETAIL



HAZ. LOC. STAINLESS STEEL LENS FRAME DETAIL



SPLASH ZONE LENS FRAME DETAIL



FOOD ZONE LENS FRAME DETAIL

REV 1/05



Hazardous Location:



Food Processing:

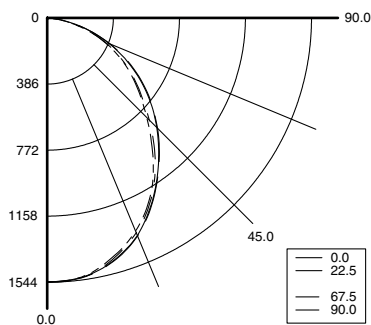


G3 RA Series



PHOTOMETRICS:

Model G32324-R5, 4FT, Specular Reflector and Prismatic Acrylic Lens, 2 32W T8 Fluorescent Lamps, Lamp Lumen Rating = 3050



Coefficients of Utilization, Zonal Cavity Method

Floor Cavity Reflectance: 20%

RC	.8				.7				.5				.3				.1				0
RW	.7	.5	.3	.1	.7	.5	.3	.1	.5	.3	.1	.5	.3	.1	.5	.3	.1	.5	.3	.1	0
R 0	74	74	74	74	73	73	73	73	69	69	69	66	66	66	64	64	64	62	62	62	62
C 1	68	66	63	61	67	64	62	60	62	60	58	59	58	56	57	56	54	53	53	53	53
R 2	62	57	53	50	61	56	53	49	54	51	48	52	49	47	50	48	46	45	45	45	45
3	57	51	46	42	56	50	45	41	48	44	41	46	43	40	45	42	39	38	38	38	38
4	52	45	40	36	51	44	39	35	43	38	35	41	37	34	40	37	34	33	33	33	33
5	48	40	35	31	47	40	34	31	38	34	30	37	33	30	36	32	30	28	28	28	28
6	45	36	31	27	43	36	31	27	35	30	27	34	30	26	33	29	26	25	25	25	25
7	41	33	28	24	40	33	27	24	32	27	24	31	27	23	30	26	23	22	22	22	22
8	39	30	25	21	38	30	25	21	29	24	21	28	24	21	27	24	21	20	20	20	20
9	36	28	23	19	35	27	23	19	27	22	19	26	22	19	25	22	19	18	18	18	18
10	34	26	21	17	33	25	21	17	25	20	17	24	20	17	24	20	17	16	16	16	16

Zonal Lumen Summary

Zone	Lumens	% Lamp	% Luminaire
0-30	1169	19.2	30.5
0-40	1867	30.6	48.7
0-60	3135	51.4	81.8
0-90	3832	62.8	100
90-120	0	0	0
90-130	0	0	0
90-150	0	0	0
90-180	0	0	0
0-180	3832	62.8	100

Total Luminaire Optical Efficiency = 62.8%
Spacing Criterion: 0° = 1.18, 90° = 1.16

1x TECHNISEAL® REAR ACCESS GRID TROFFER ORDERING INFORMATION:

SERIES	LAMP QTY	LAMP TYPE	LENS	OPT MAT	GRID	OPTIONS	VOLTAGE
G3 Wet Location Cleanroom	1 2 Standard		2 .125 Clear Acrylic (No Pattern) 3 .125 White Acrylic 4 .140 Prismatic Acrylic (P12) (base) 6 .125 Clear Polycarbonate (No Pattern) 7 .125 White Polycarbonate 8 .156 Prismatic Polycarbonate (P12) 9 .187 Tempered Glass (P62)			B1 Bodine BDL700 (0-50°C) N/A <3FT B2 Bodine BDL500 (0-50°C) N/A <3FT B3 Bodine BDL900 (0-50°C) N/A <3FT B9 Bodine BHD65U (Haz. Loc.) N/A <3FT BALLASTS D1 Lutron Dimming ECO-10 D2 Electronic Dimming D4 < 10% THD (Consult Factory) D8 Low-Temp Magnetic Ballast (N/A T8) D9 Magnetic Ballast E2 2 Electronic Ballasts E3 3 Electronic Ballasts E9 Rapid Start Electronic Ballast FUSING F1 GLR/HLR Fusing (Fast) F2 GMF/HLR Fusing (Slow) LENSING H2 .150 Extra Heavy Clear Acrylic H3 .150 Extra Heavy White Acrylic H5 .156 C73 Tempered Glass H6 .187 Clear Tempered Glass J0 Lamp Sleeves (Specify Color) J2 .060 Clear Acrylic Overlay J4 .020 White Acrylic Overlay (Lamp Side) J6 .080 Clear Polycarbonate Overlay J7 Louver (Specify) J9 RFI Lens (Specify Pattern) K1 .156 Prismatic Acrylic (P19) K3 .187 KSH-12 Acri-Tuf Acrylic K6 External Prisms (N/A Splash/Food Zones) MISC P9 Special Paint Color (Provide Paint Code & Chip) R5 Specular Aluminum Reflector S1 Special Material (Consult Agent) T3 Tamper Resistant (Spanner STD, Others Avail.) V1 External Gasketing V3 No Silicone Sealant Used W4 Inboard Outboard Wiring (Dual Switching) Y1 Nite Lite (Consult Agent) Y5 RFI Suppressors	120V/60Hz Standard 277V/60Hz 347V/60Hz 50Hz & Other Voltages Available
MG3 Inside Drip-proof			LENSES AVAILABLE FOR FOOD ZONE 6 .125 Clear Polycarbonate (No Pattern) 7 .125 White Polycarbonate 8 .156 Prismatic Polycarbonate (P12) (base) 9 .187 Tempered Glass (P62) Colored acrylic lens available, consult agent. (See page 215 for available lens colors.)				
14T5* F14T5 (2FT)	0°						
17* F17T8 (2FT)	0°						
24T5H F24T5/HO (4FT)	0°						
25* F25T8 (3FT)	0°						
28T5* F28T5 (4FT)	0°						
31U* FB31T8/U 1 5/8" (2FT) 1L	0°						
31U6* FB31T8/U 6" (2FT) 1L Only	0°						
32* F32T8 (4FT)	0°						
54T5H F54T5/HO (4FT)	0°						
			S2 Stainless Steel Housing S3 Stainless Steel Exterior S5 Stainless Steel Lens Frame Only 304 SS Standard, 316 SS and other materials available, consult agent				
			G1 1 1/2" T-Bar G2 2" T-Bar 1 Inch T-Bar Standard				

* Lamp Type Available for Hazardous Location.

Other Wattages and Lengths Available, Consult Factory.

NSF Food Processing Note:

Food Zone (F prefix) luminaires come in DIRECT CONTACT with food.

Splash Zone (S prefix) units may become soiled, but are outside the danger of recontamination.

Information subject to change without notice. Lamps supplied by others.

© 2005 Paramount Industries, Inc. P.O. Box 259 Crosswell, MI 48422

Project Information:

Add hyphens between options