



G5/V9 Rear Access Series

HID | GRID



2x2 HID APPLICATIONS:

- UL/CUL Listed Wet Location
- Cleanroom (Classes 100-100,000; ISO Classes 5-9)
- NSF Certified Food Processing (Splash Zone, Food Zone)
- Industrial & Commercial

BENEFITS:

- Accessible from rear or front for servicing
- Luminaires adaptable to your specific needs

FEATURES:

- Available in stainless steel construction
- Every luminaire tested with lamps to assure customer satisfaction
- 5 year limited warranty
- Proudly made in **USA**

SPECIFICATIONS:

HOUSING:

Constructed of nominal 20GA (.036) zinc coated steel for unmatched corrosion protection. One welded, tapered, threaded flange on the side provides a sealed wireway access. All seams are sealed with a long life acrylic sealant.

Food Zone: All external metal components of stainless steel (S3 option std).

REFLECTOR:

Fabricated of diffuse aluminum.

REAR ACCESS DOOR:

Nominal 20GA (.036) zinc coated steel and is secured with plated captive screws. EPDM extruded gasket seals the door to the housing.

LENS FRAME:

Exclusively designed, heavy duty, extruded, anodized aluminum with stainless steel captive screws used to hold the lens frame tight to the housing. The frame is hinged for support while servicing.

Food Zone: All external metal components of stainless steel (S3 option std).

GASKETING:

Silicone sealant is used to seal the lens into the frame; with our exclusive, mechanically held, extruded, silicone gasket used to seal the frame to the housing.

Food Zone: Adhesive sealant is used to seal the lens into the stainless steel frame, with EPDM sealing the frame to the housing.

FINISH:

Painted surfaces are two mil of white polyester enamel.

LENS:

.187 pattern 62 tempered glass.

Splash and Food Zones:

.187 pattern 62 tempered glass with .080 clear polycarbonate overlay.

ELECTRICAL:

Core and coil ballast standard. Porcelain mogul base lampholder has a nickel plated screw shell.

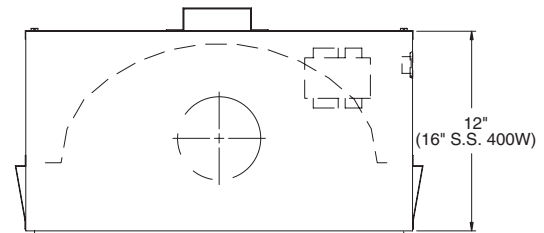
MOUNTING:

Grid or custom detail available.

TEMPERATURE:

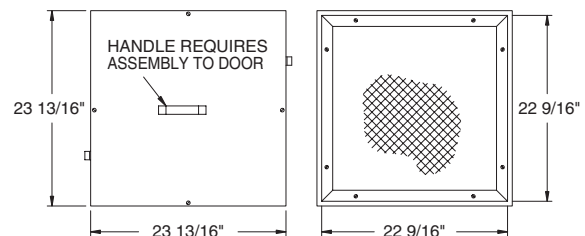
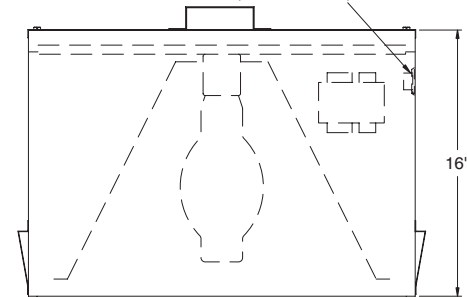
Class I, Div. 2 - T1 (340°C); Class II, Div. 2 - T3B (165°C).

G5: Horizontal Lamp Position

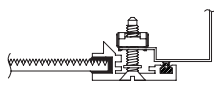


V9: Vertical Lamp Position

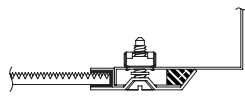
1/2" THREADED FLANGE (WIRE ENTRY)



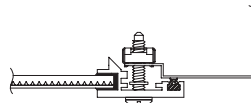
LENS FRAME DETAILS:



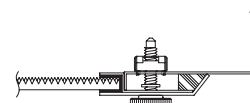
ALUMINUM
LENS FRAME DETAIL



STAINLESS STEEL
LENS FRAME DETAIL



SPLASH ZONE
LENS FRAME DETAIL

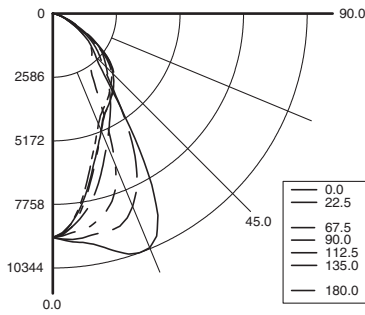


FOOD ZONE
LENS FRAME DETAIL



PHOTOMETRICS: For additional photometry, go to paramountlighting.com

Model G5250M9, Semi-specular Reflector and Tempered Glass Lens, 1 250W MH Lamp, Lamp Lumen Rating = 19500



Coefficients of Utilization, Zonal Cavity Method

Floor Cavity Reflectance: 20%

RC	.8				.7				.5				.3				.1				0
RW	.7	.5	.3	.1	.7	.5	.3	.1	.5	.3	.1	.5	.3	.1	.5	.3	.1	.5	.3	.1	0
R 0	83	83	83	83	81	81	81	81	78	78	78	74	74	74	71	71	71	70	70	70	70
C 1	78	75	73	71	76	73	71	69	71	69	67	68	66	65	65	64	63	62	62	62	62
R 2	72	67	63	60	70	66	62	59	64	61	58	61	59	57	59	57	55	54	54	54	54
3	67	60	56	52	65	59	55	51	57	54	50	56	52	50	54	51	49	47	47	47	47
4	62	55	49	45	60	54	49	45	52	48	44	50	47	44	49	46	43	42	42	42	42
5	57	50	44	40	56	49	44	40	47	43	39	46	42	39	45	41	39	37	37	37	37
6	53	45	40	36	52	45	39	36	43	39	35	42	38	35	41	38	35	33	33	33	33
7	50	41	36	32	49	41	36	32	40	35	32	39	35	32	38	34	31	30	30	30	30
8	47	38	33	29	46	38	33	29	37	32	29	36	32	29	35	32	29	27	27	27	27
9	44	35	30	27	43	35	30	27	34	30	27	34	29	26	33	29	26	25	25	25	25
10	41	33	28	25	41	33	28	25	32	28	24	31	27	24	31	27	24	23	23	23	23

Zonal Lumen Summary

Zone	Lumens	% Lamp	% Luminaire
0-30	5605	28.7	41
0-40	8185	42	59.8
0-60	12387	63.5	90.5
0-90	13680	70.2	100
90-120	1	0	0
90-130	1	0	0
90-150	1	0	0
90-180	1	0	0
0-180	13682	70.2	100

Total Luminaire Optical Efficiency = 70.2%
Spacing Criterion: 0° = 1.21, 90° = 0.69

2x2 HID REAR ACCESS GRID LUMINAIRE ORDERING INFORMATION:

SERIES	LAMP WATTS	LAMP TYPE	LENS	OPT MAT	GRID	OPTIONS	VOLTAGE
Horizontal Lamp G5 Wet Location SG5 Splash Zone FG5 Food Zone Vertical Lamp V9 Wet Location SV9 Splash Zone FV9 Food Zone	150 175 MH only 200 MH only 250 320 MH only 350 MH only 400	M MH Mogul Base S HPS Mogul Base	9 .187 Tempered Glass (P62) FOOD ZONE ONLY 9 .187 Tempered Glass (P62) with .080 Clear Polycarbonate Overlay	*S2 Stainless Steel Housing *S3 Stainless Steel Exterior *S5 Stainless Steel Lens Frame Only * Note: If Stainless Steel is ordered, 304 SS Standard 316 SS and other materials available, consult agent.	G2 1 1/2 & 2" T-Bar 1 inch T-Bar Standard	FUSING F2 GMF/HLR Fusing (Slow) LENSING H5 .156 C73 Tempered Glass H6 .187 Clear Tempered Glass H7 Acrylic Drop Lens (N/A Splash Zone/Food Zone) J2 .060 Clear Acrylic Overlay (N/A Food Zone) J6 .080 Clear Polycarbonate Overlay (Std, Food Zone) J8 Wire Guard (N/A Splash Zone/Food Zone) K0 .200 V825 Acrylic (N/A Food Zone) K6 External Prisms (N/A Splash Zone/Food Zone) MISC P9 Special Paint Color (Provide Paint Code & Chip) R4 Asymmetric Reflector (N/A Vertical Lamp) S1 Special Material (Consult Agent) T3 Tamper Resistant (Hex w/pin STD, Others Avail) V1 External Gasketing (N/A Splash Zone/Food Zone) Y3 Quartz Restrike Add hyphens between options	120V-277V/60Hz STD 208V/60Hz 240V/60Hz 347V/60Hz 480V/60Hz 50Hz Available

G5 Series requires 16" deep housing when Stainless Steel.

All Vertical Lamp models require 16" deep housing.

Other Wattages Available, Consult Factory.

NSF Food Processing Note:

Food Zone (F prefix) luminaires come in **DIRECT CONTACT** with food.
Splash Zone (S prefix) units may become soiled, but are outside the danger of recontamination.

Information subject to change without notice. Lamps supplied by others.

© 2010 Paramount Industries, Inc. P.O. Box 259 Crosswell, MI 48422

Project Information: