

# G6 Series

FLUORESCENT | GRID 



**FLOW-THRU TECHNISEAL® APPLICATIONS:**

- UL/CUL Listed Dry Location
- Cleanroom  
(Classes 10-100,000; ISO Classes 4-9)

**BENEFITS:**

- Luminaires adaptable to your specific needs

**FEATURES:**

- Premium electronic ballast standard
- Available in stainless steel construction
- Every luminaire tested with lamps to assure customer satisfaction
- 5 year limited warranty
- Proudly made in **USA**

## SPECIFICATIONS:

**HOUSING:**

Constructed of 20GA (.036) zinc coated steel for unmatched corrosion protection. Two welded, tapered, threaded flanges on the side provide wireway access. All seams are sealed with a long life acrylic sealant.

**REFLECTOR:**

Individually fabricated of zinc coated steel, painted with a minimum reflectance of 88%.

**LOUVER:**

1/2" x 1/2" square cell white acrylic.

**FINISH:**

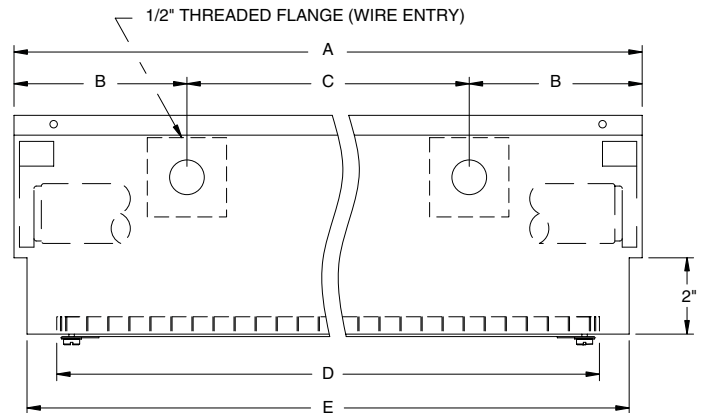
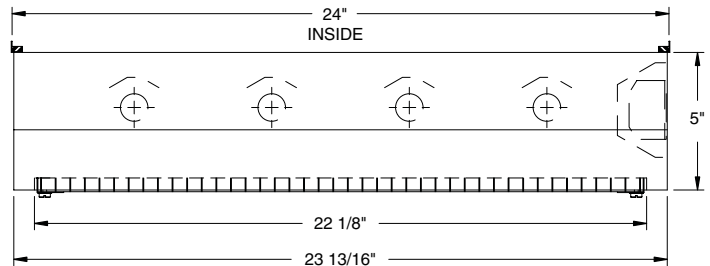
Painted surfaces are two mil of white polyester enamel.

**ELECTRICAL:**

All ballasts and lampholders are UL Listed.

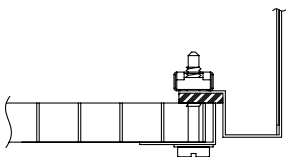
**MOUNTING:**

Grid or custom detail available.



LENGTH	DIMENSIONS IN INCHES				
	A	B	C	D	E
2 FT	24	5	14	22 1/8	23 11/16
4 FT	48	5	38	46 1/8	47 11/16

LOUVER FRAME DETAIL



REV 1/05

