

G9 Gel Series

FLUORESCENT | GRID 



2x TECHNISEAL® GEL

APPLICATIONS:

- UL/CUL Listed Wet Location
- Cleanroom
(Classes 100-100,000; ISO Classes 5-9)

BENEFITS:

- Luminaires adaptable to your specific needs

FEATURES:

- Premium electronic ballast standard
- Available in stainless steel construction
- Every luminaire tested with lamps to assure customer satisfaction
- 5 year limited warranty
- Proudly made in **USA**

SPECIFICATIONS:

HOUSING:

Constructed of nominal 20GA (.036) zinc coated steel for unmatched corrosion protection. Two welded, tapered, threaded flanges on the top provide a sealed wireway access. All seams are sealed with a long life acrylic sealant.

REFLECTOR:

Fabricated of zinc coated steel, painted with a minimum reflectance of 88%.

LENS FRAME:

Exclusively designed, heavy duty, extruded, anodized aluminum with stainless steel captive screws used to hold the lens frame tight to the housing. The frame is hinged for support while servicing.

GASKETING:

An extruded, ribbed vinyl gasket seals the lens into the frame; with our exclusive, mechanically held, extruded, silicone gasket used to seal the frame to the housing.

FINISH:

Painted surfaces are two mil white polyester enamel, special colors available.

LENS:

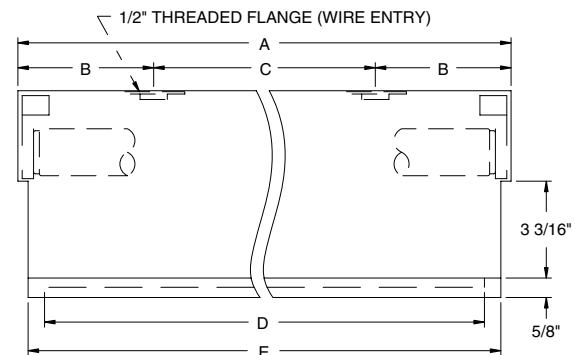
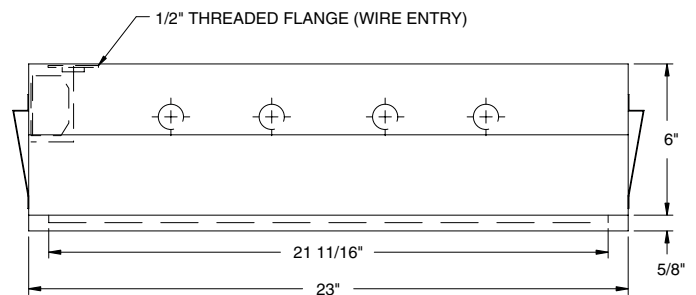
.140 extruded prismatic acrylic with 50% DR content for durability, smooth side out.

ELECTRICAL:

All ballasts and lampholders are UL Listed.

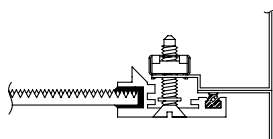
MOUNTING:

Grid or custom detail available.

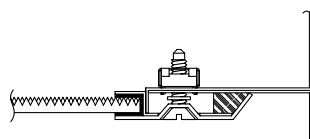


LENGTH	DIMENSIONS IN INCHES				
	A	B	C	D	E
2 FT	24	5 3/8	13 3/4	21 11/16	23
4 FT	48	5	38	45 11/16	47

LENS FRAME DETAILS:



ALUMINUM
LENS FRAME DETAIL



STAINLESS STEEL
LENS FRAME DETAIL

REV 1/05

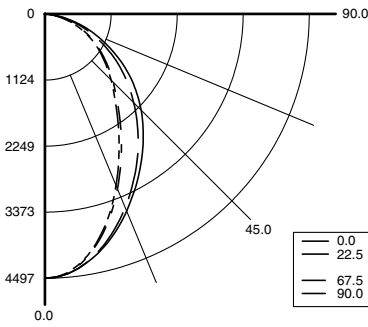


G9 Gel Series



PHOTOMETRICS:

Model G94324-R5, 4FT, Specular Reflector and Prismatic Acrylic Lens, 4 32W T8 Fluorescent Lamps, Lamp Lumen Rating = 3050



Coefficients of Utilization, Zonal Cavity Method

Floor Cavity Reflectance: 20%

RC	.8				.7				.5				.3				.1				0
RW	.7	.5	.3	.1	.7	.5	.3	.1	.5	.3	.1	.5	.3	.1	.5	.3	.1	.5	.3	.1	0
R 0	84	84	84	84	82	82	82	82	78	78	78	75	75	75	72	72	72	71	71	71	71
C 1	78	75	72	69	76	73	71	68	70	68	66	67	66	64	65	63	62	61	61	61	61
R 2	71	66	61	58	69	65	60	57	62	59	56	60	57	54	58	55	53	52	52	52	52
3	65	58	53	49	64	57	52	48	55	51	48	53	50	47	52	49	46	44	44	44	44
4	60	52	46	42	59	51	46	42	50	45	41	48	44	41	46	43	40	39	39	39	39
5	56	47	41	37	54	46	41	36	45	40	36	43	39	36	42	38	35	34	34	34	34
6	52	43	37	32	50	42	36	32	41	36	32	40	35	32	39	35	31	30	30	30	30
7	48	39	33	29	47	38	33	29	37	32	29	36	32	28	35	31	28	27	27	27	27
8	45	36	30	26	44	35	30	26	34	29	26	34	29	26	33	29	26	24	24	24	24
9	42	33	27	24	41	33	27	24	32	27	24	31	27	23	30	26	23	22	22	22	22
10	40	31	25	22	39	30	25	22	30	25	22	29	25	21	28	24	21	20	20	20	20

Zonal Lumen Summary

Zone	Lumens	% Lamp	% Luminaire
0-30	2991	24.5	34.6
0-40	4553	37.3	52.6
0-60	7239	59.3	83.7
0-90	8650	70.9	100
90-120	0	0	0
90-130	0	0	0
90-150	0	0	0
90-180	0	0	0
0-180	8650	70.9	100

Total Luminaire Optical Efficiency = 70.9%
Spacing Criterion: 0° = 1.07, 90° = 0.91

2x TECHNISEAL® GEL GRID TROFFER ORDERING INFORMATION:

G9	LAMP QTY	LAMP TYPE	LENS	OPT MAT	OPTIONS	VOLTAGE
G9 Cleanroom	2 3 4 Standard 6		2 .125 Clear Acrylic (No Pattern) 3 .125 White Acrylic 4 .140 Prismatic Acrylic (P12) (base) 6 .125 Clear Polycarbonate (No Pattern) 7 .125 White Polycarbonate 8 .156 Prismatic Polycarbonate (P12) 9 .187 Tempered Glass (P62)		EMERGENCY B1 Bodine BDL700 (0-50°C) B2 Bodine BDL500 (0-50°C) N/A <3FT B3 Bodine BDL900 (0-50°C) BALLASTS D1 Lutron Dimming ECO-10 D2 Electronic Dimming D4 < 10% THD (Consult Factory) D8 Low-Temp Magnetic Ballast (N/A T8) D9 Magnetic Ballast E2 2 Electronic Ballasts E3 3 Electronic Ballasts E4 4 Electronic Ballasts E9 Rapid Start Electronic Ballast FUSING F1 GLR/HLR Fusing (Fast) F2 GMF/HLR Fusing (Slow) LENSING H2 .150 Extra Heavy Clear Acrylic H3 .150 Extra Heavy White Acrylic H5 .156 C73 Tempered Glass H6 .187 Clear Tempered Glass J0 Lamp Sleeves (Specify Color) J2 .060 Clear Acrylic Overlay J4 .020 White Acrylic Overlay (Lamp Side) J6 .080 Clear Polycarbonate Overlay J7 Louver (Specify) J9 RFI Lens (Specify Pattern) K1 .156 Prismatic Acrylic (P19) K3 .187 KSH-12 Acri-Tuf Acrylic MISC P9 Special Paint Color (Provide Paint Code & Chip) R5 Specular Aluminum Reflector S1 Special Material (Consult Agent) T3 Tamper Resistant (Spanner STD, Others Avail.) V3 No Silicone Sealant Used W4 Inboard Outboard Wiring (Dual Switching) Y1 Nite Lite (Consult Agent) Y5 RFI Suppressors	120V/60Hz Standard 277V/60Hz 347V/60Hz 50Hz & Other Voltages Available
40BX F40T5TT (2FT) N/A 6L	0°		S2 Stainless Steel Housing S3 Stainless Steel Exterior S5 Stainless Steel Lens Frame Only 304 SS Standard, 316 SS and other materials available, consult agent			
50BX F50T5TT (2FT) N/A 6L	0°					
14T5 F14T5 (2FT)	0°					
17 F17T8 (2FT)	0°					
24T5H F24T5/HO (4FT)	0°					
25 F25T8 (3FT)	0°					
28T5 F28T5 (4FT)	0°					
31U FB31T8/U 1 5/8" (2FT) 1L	0°					
31U6 FB31T8/U 6" (2FT) 1L Only	0°					
32 F32T8 (4FT)	0°					
48H F48T12/HO (4FT) N/A 6L	-20°					
54T5H F54T5/HO (4FT) N/A 6L	0°					

Note:

Designed to work in conjunction with the Gordon Gel Grid Ceiling System (or similar systems). Other Wattages and Lengths Available, Consult Factory.

Project Information:

Information subject to change without notice. Lamps supplied by others.

© 2005 Paramount Industries, Inc. P.O. Box 259 Crosswell, MI 48422