



# HB7 1x FA Series

FLUORESCENT | FLANGE



**1x BOOTH LITE APPLICATIONS:**

- UL/CUL Listed Wet Location
- UL/CUL Hazardous Location (Class I, Division 2; Groups A, B, C & D Class II, Division 2; Groups F & G)

**BENEFITS:**

- Front access
- Luminaires adaptable to your specific needs

**FEATURES:**

- Premium electronic ballast standard where available
- Available in Stainless Steel construction
- Every luminaire tested with lamps to assure customer satisfaction
- 5 year limited warranty
- Proudly made in **USA**

## SPECIFICATIONS:

**HOUSING:**

Constructed of nominal 18GA (.048) zinc coated steel for unmatched corrosion protection. One welded, tapered, threaded hub on the side provides a sealed wireway access. All seams are sealed with a long life acrylic sealant.

**REFLECTOR:**

Fabricated of zinc coated steel, painted with a minimum reflectance of 88%.

**LENS FRAME:**

18GA (.048) zinc coated steel with captive quarter turn fasteners used to hold the lens frame tight to the housing. The frame is supported by a full length piano hinge for ease of servicing.

**GASKETING:**

EPDM is used to seal the lens into the frame and the frame to the housing.

**FINISH:**

Painted surfaces are two mil of white polyester enamel.

**LENS:**

.187 Pattern 62 tempered glass.

**ELECTRICAL:**

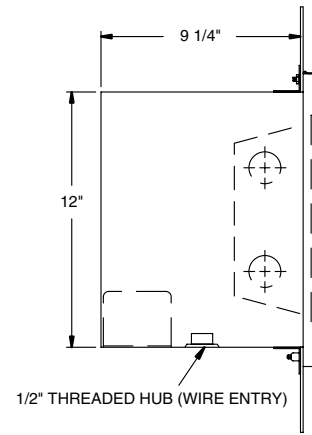
All ballasts and lampholders are UL Listed.

**MOUNTING:**

Supplied with 14GA (.075) stainless steel flange. 304 SS standard, 316 SS and other materials also available. Custom size flanges available. Contact Sales Representative for information.

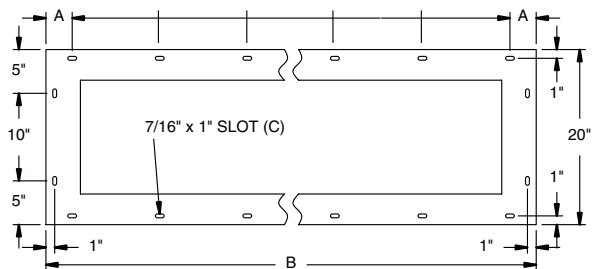
**TEMPERATURE CODE:**

Class I, Div. 2 - T3 (200°C); Class II, Div. 2 - T6 (85°C).



**MOUNTING FLANGE DETAIL**

4FT: 5 SPACES @ 10" O.C.  
8FT: 10 SPACES @ 10" O.C.



**NOMINAL HOUSING DIMENSIONS IN INCHES**

LUMINAIRE	HOUSING	PANEL CUT-OUT SIZE
1 FT x 4 FT	12 x 48 1/8	14 3/4 x 50 7/8
1 FT x 8 FT	12 x 96 1/8	14 3/4 x 98 7/8

**MOUNTING FLANGE DIMENSIONS IN INCHES**

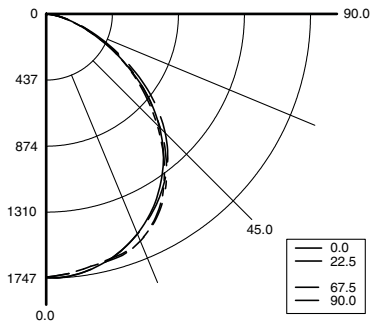
LUMINAIRE	A	B	C (QTY)
1 FT x 4 FT	3	56	16
1 FT x 8 FT	2	104	26

# HB7 1x FA Series



## PHOTOMETRICS:

Model HB7248H9-EO-R5, 4FT, Specular Reflector and Tempered Glass Lens, 2 60W T12/HO Fluorescent Lamps, Lamp Lumen Rating = 4050



### Coefficients of Utilization, Zonal Cavity Method

Floor Cavity Reflectance: 20%

RC	.8				.7				.5				.3				.1				0
RW	.7	.5	.3	.1	.7	.5	.3	.1	.5	.3	.1	.5	.3	.1	.5	.3	.1	.5	.3	.1	0
R 0	63	63	63	63	61	61	61	61	58	58	58	56	56	56	54	54	54	53	53	53	0
C 1	58	56	54	52	57	55	53	51	52	51	49	50	49	48	48	47	46	45	45	45	0
R 2	53	49	46	43	52	48	45	43	46	44	42	45	43	41	43	41	40	39	39	39	0
3	49	44	40	36	47	43	39	36	41	38	35	40	37	35	38	36	34	33	33	33	0
4	45	39	34	31	44	38	34	31	37	33	31	36	33	30	34	32	30	29	29	29	0
5	41	35	30	27	40	34	30	27	33	29	27	32	29	26	31	28	26	25	25	25	0
6	38	31	27	24	37	31	27	24	30	26	23	29	26	23	28	25	23	22	22	22	0
7	35	29	24	21	34	28	24	21	27	24	21	27	23	21	26	23	20	19	19	19	0
8	33	26	22	19	32	26	22	19	25	21	19	24	21	18	24	21	18	17	17	17	0
9	31	24	20	17	30	24	20	17	23	19	17	22	19	17	22	19	17	16	16	16	0
10	29	22	18	15	28	22	18	15	21	18	15	21	17	15	20	17	15	14	14	14	0

### Zonal Lumen Summary

Zone	Lumens	% Lamp	% Luminaire
0-30	1355	16.7	31.6
0-40	2208	27.3	51.5
0-60	3689	45.5	86
0-90	4289	53	100
90-120	0	0	0
90-130	0	0	0
90-150	0	0	0
90-180	0	0	0
0-180	4289	53	100

Total Luminaire Optical Efficiency = 53.0%  
Spacing Criterion: 0° = 1.22, 90° = 1.26

## 1x BOOTH LITE—FRONT ACCESS ORDERING INFORMATION:

<b>HB7</b> SERIES	<b>2</b> LAMP QTY	<b>LAMP TYPE</b>	<b>9</b> LENS	<b>OPTIONS</b>	<b>VOLTAGE</b>
HB7 Hazardous			9 .187 Tempered Glass (P62)	<b>EMERGENCY</b> <b>B1</b> Bodine BDL700 (0-50°C) Remote Only* <b>B2</b> Bodine BDL500 (0-50°C) Remote Only* <b>B3</b> Bodine BDL900 (0-50°C) Remote Only* <b>B9</b> Bodine BHD65U Hazardous Location <b>BALLASTS</b> <b>D4</b> < 10% THD (Consult Factory) <b>D9</b> Magnetic Ballast <b>E2</b> 2 Electronic Ballasts <b>E3</b> 3 Electronic Ballasts <b>E9</b> Rapid Start Electronic Ballast <b>FUSING</b> <b>F1</b> GLR/HLR Fusing (Fast) <b>F2</b> GMF/HLR Fusing (Slow) <b>LENSING</b> <b>H5</b> .156 C73 Tempered Glass <b>H6</b> .187 Clear Tempered Glass <b>MISC</b> <b>R5</b> Specular Aluminum Reflector <b>S1</b> Special Material (Consult Agent)	<b>120V/60Hz</b> Standard 277V/60Hz 347V/60Hz 50Hz & Other Voltages Available
<b>32</b> F32T8 (4FT) 0° <b>48H</b> F48T12/HO (4FT) -20° <b>48V</b> F48T12/VHO Mag. (4FT) -20° <b>96H</b> F96T12/HO (8FT) -20° <b>96T8</b> F96T8 (8FT) (59W) 50° <b>96T8H</b> F96T8/HO (8FT) -20° <b>96V</b> F96T12/VHO Mag. (8FT) -20°					

**Project Information:**

Information subject to change without notice. Lamps supplied by others.

© 2005 Paramount Industries, Inc. P.O. Box 259 Crosswell, MI 48422