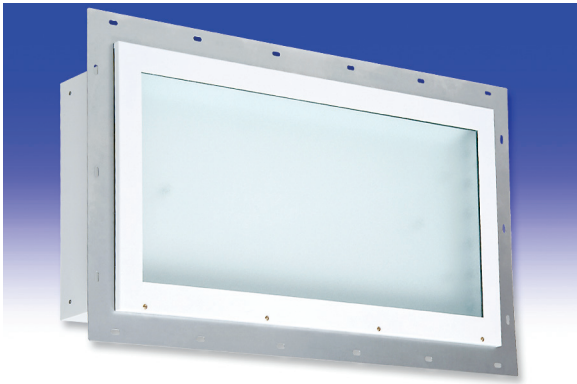


HB9 2x FA Series

FLUORESCENT | FLANGE 



2x BOOTH LITE APPLICATIONS:

- UL/CUL Listed Wet Location
- UL/CUL Hazardous Location (Class I, Division 2; Groups A, B, C & D; Class II, Division 2; Groups F & G)

BENEFITS:

- Front access
- Luminaires adaptable to your specific needs

FEATURES:

- Premium electronic ballast standard where available
- Available in Stainless Steel construction
- Every luminaire tested with lamps to assure customer satisfaction
- 5 year limited warranty
- Proudly made in **USA**

SPECIFICATIONS:

HOUSING:

Constructed of nominal 18GA (.048) zinc coated steel for unmatched corrosion protection. One welded, tapered, threaded hub on the side provides a sealed wireway access. All seams are sealed with a long life acrylic sealant.

REFLECTOR:

Fabricated of zinc coated steel, painted with a minimum reflectance of 88%.

LENS FRAME:

18GA (.048) zinc coated steel with captive quarter turn fasteners used to hold the lens frame tight to the housing. The frame is supported by a full length piano hinge for ease of servicing.

GASKETING:

EPDM is used to seal the lens into the frame and the frame to the housing.

FINISH:

Painted surfaces are two mil of white polyester enamel.

LENS:

.187 Pattern 62 tempered glass.

ELECTRICAL:

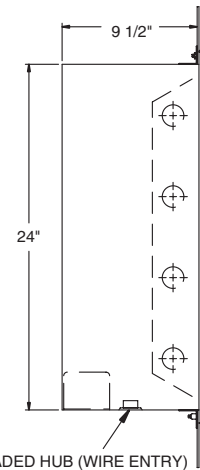
All ballasts and lampholders are UL Listed.

MOUNTING:

Supplied with 14GA (.075) stainless steel flange. 304 SS standard, 316 SS and other materials also available. Custom size flanges available. Contact Sales Representative for information.

TEMPERATURE CODE:

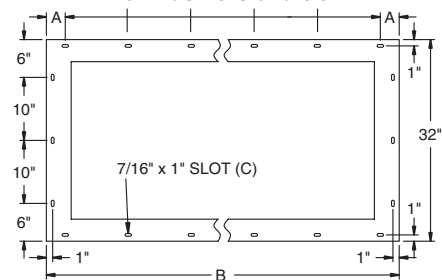
Class I, Div. 2 - T3 (200°C); Class II, Div. 2 - T6 (85°C).



1/2" THREADED HUB (WIRE ENTRY)

MOUNTING FLANGE DETAIL

4FT: 5 SPACES @ 10" O.C.
8FT: 10 SPACES @ 10" O.C.



NOMINAL HOUSING DIMENSIONS IN INCHES

LUMINAIRE	HOUSING	PANEL CUT-OUT SIZE
2 FT x 4 FT	24 x 48 1/8	26 3/4 x 50 7/8
2 FT x 8 FT	24 x 96 1/8	26 3/4 x 98 7/8

MOUNTING FLANGE DIMENSIONS IN INCHES

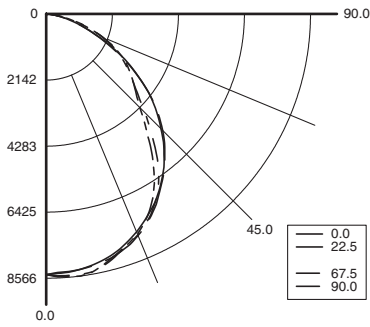
LUMINAIRE	A	B	C (QTY)
2 FT x 4 FT	3	56	18
2 FT x 8 FT	2	104	28

HB9 2x FA Series



PHOTOMETRICS: For additional photometry, go to paramountlighting.com

Model HB9496T8H9-R5, 8FT, Specular Reflector and Tempered Glass Lens, 4 86W T8/HO Fluorescent Lamps, Lamp Lumen Rating = 8200



Coefficients of Utilization, Zonal Cavity Method

Floor Cavity Reflectance: 20%

RC	.8				.7				.5				.3				.1				0
RW	.7	.5	.3	.1	.7	.5	.3	.1	.5	.3	.1	.5	.3	.1	.5	.3	.1	.5	.3	.1	0
R 0	75	75	75	75	73	73	73	73	70	70	70	67	67	67	64	64	64	63			
C 1	69	66	64	62	67	65	63	61	62	60	59	60	58	57	57	56	55	54			
R 2	63	58	54	51	62	57	54	50	55	52	49	53	50	48	51	49	47	46			
3	58	52	47	43	56	51	46	43	49	45	42	47	44	41	45	43	40	39			
4	53	46	41	37	52	45	40	37	44	39	36	42	38	36	41	38	35	34			
5	49	41	36	32	48	41	36	32	39	35	31	38	34	31	37	33	31	29			
6	45	37	32	28	44	37	32	28	36	31	28	35	30	27	34	30	27	26			
7	42	34	29	25	41	33	28	25	32	28	25	32	27	24	31	27	24	23			
8	39	31	26	22	38	31	26	22	30	25	22	29	25	22	28	25	22	21			
9	37	28	23	20	36	28	23	20	27	23	20	27	23	20	26	22	20	19			
10	34	26	21	18	34	26	21	18	25	21	18	25	21	18	24	21	18	17			

Zonal Lumen Summary

Zone	Lumens	% Lamp	% Luminaire
0-30	6570	20	31.8
0-40	10574	32.2	51.1
0-60	17413	53.1	84.2
0-90	20691	63.1	100
90-120	0	0	0
90-130	0	0	0
90-150	0	0	0
90-180	0	0	0
0-180	20691	63.1	100

Total Luminaire Optical Efficiency = 63.1%
Spacing Criterion: 0° = 1.23, 90° = 1.20

2x BOOTH LITE—FRONT ACCESS ORDERING INFORMATION:

HB9 SERIES	4 LAMP QTY	LAMP TYPE	9 LENS	OPTIONS	VOLTAGE
HB9 Hazardous			9 .187 Tempered Glass (P62)	EMERGENCY (SPECIFY VOLTAGE) *EM2 Bodine BDL700 WET/IOTA I-48-DL WET or similar *EM3 Bodine BDL500 WET/IOTA I-320-DL WET or similar *EM4 Bodine BDL900 WET/IOTA I-40-DL WET or similar EM8 Bodine BHD65U HAZ. LOC. BALLASTS (SPECIFY VOLTAGE) D4 < 10% THD (Consult Factory) E0 Low Temp Electronic (N/A T12 RS & VHO) E2 2 Electronic Ballasts E3 3 Electronic Ballasts E4 4 Electronic Ballasts E9 Rapid Start Electronic Ballast FUSING F1 GLR/HLR Fusing (Fast) F2 GMF/HLR Fusing (Slow) LENSING H5 .156 C73 Tempered Glass H6 .187 Clear Tempered Glass MISC R5 Specular Aluminum Reflector S1 Special Material (Consult Agent)	120V-277V/60Hz STD 347V/60Hz 50Hz & Other Voltages Available
32 F32T8 (4FT) 0° 48H F48T12/HO (4FT) -20° 48V F48T12/VHO Mag. (4FT) -20° 48T8H F48T8/HO (4FT) -20° 96H F96T12/HO (8FT) -20° 96T8 F96T8 (8FT) (59W) 50° 96T8H F96T8/HO (8FT) -20° 96V F96T12/VHO Mag. (8FT) -20°					

* Must be remoted to a NON-HAZARDOUS location
Add hyphens between options

Project Information:

Information subject to change without notice. Lamps supplied by others.

© 2010 Paramount Industries, Inc. P.O. Box 259 Crosswell, MI 48422