

CORNER LITE APPLICATIONS:

- UL/CUL Listed Wet Location
- Cleanroom (Classes 100-100,000; ISO Classes 5-9)
- UL/CUL Hazardous Location (Class I, Division 2; Groups A, B, C & D; Class II, Division 2; Groups F & G)
- NSF Certified Food Processing (Splash Zone, Food Zone)
- Industrial & Commercial
- Transit

BENEFITS:

- Luminaires adaptable to your specific needs

FEATURES:

- Premium electronic ballast standard
- Available in stainless steel construction
- Every luminaire tested with lamps to assure customer satisfaction
- 5 year limited warranty
- Proudly made in **USA**

SPECIFICATIONS:

HOUSING:

Constructed of nominal 20GA (.036) zinc coated steel for unmatched corrosion protection. 1/2" threaded flange on back of luminaire provides wireway access. All seams are sealed with a long life acrylic sealant.

Food Zone: All external metal components of stainless steel (S3 option std).

REFLECTOR:

Fabricated of zinc coated steel, painted with a minimum reflectance of 88%.

LENS FRAME:

Exclusively designed, heavy duty, extruded, anodized aluminum with captive screws used to hold the lens frame tight to the housing. The frame is supported by two cables while servicing.

Food Zone: All external metal components of stainless steel (S3 option std).

GASKETING:

An extruded, ribbed vinyl gasket seals the lens into the frame; with our exclusive, mechanically held, extruded, silicone gasket used to seal the frame to the housing.

Splash Zone: Silicone sealant is used to seal the lens into the frame.

Food Zone: Silicone sealant is used to seal the lens into the frame, with extruded EPDM sealing the frame to the housing.

FINISH:

Painted surfaces are two mil white polyester enamel, special colors available.

LENS:

.140 extruded prismatic acrylic with 50% DR content for durability, smooth side out.

Food Zone: .156 extruded prismatic polycarbonate, smooth side out.

ELECTRICAL:

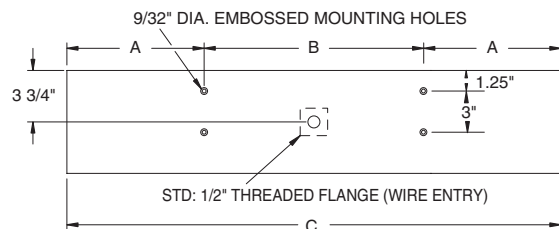
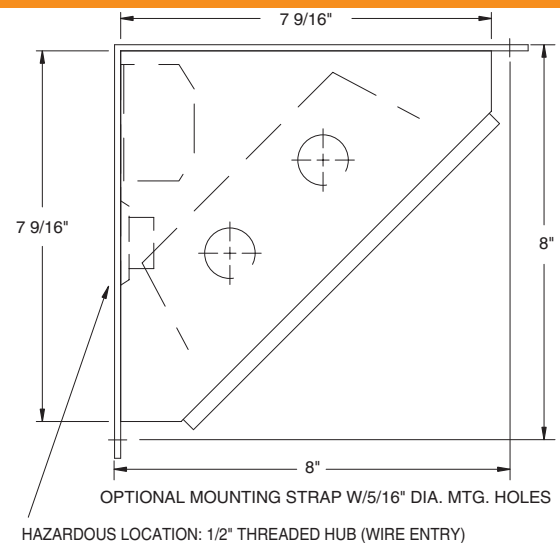
All ballasts and lampholders are UL Listed.

MOUNTING:

Surface or custom detail available for covered ceiling installations.

TEMPERATURE CODE:

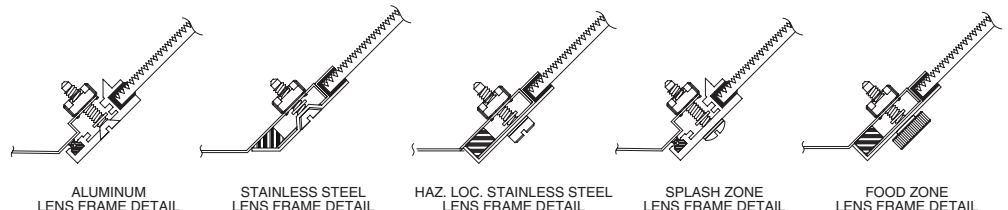
Class I, Div. 2= T5 (100°C); Class II, Div. 2= T5 (100°C)



LENGTH	DIMENSIONS IN INCHES		
	A	B	C
16"	3	10	16
19"	4 1/2	10	19
2 FT	4 5/16	16	24 5/8
3 FT	10 5/16	16	36 5/8
4 FT	8 5/16	32	48 5/8
6 FT	12 5/16	48	72 5/8
8 FT	16 5/16	64	96 5/8

LENS FRAME DETAILS:

TAMPER RESISTANT SCREW HEADS
OPTION SUFFIX- T3





Hazardous Location:



Food Processing:

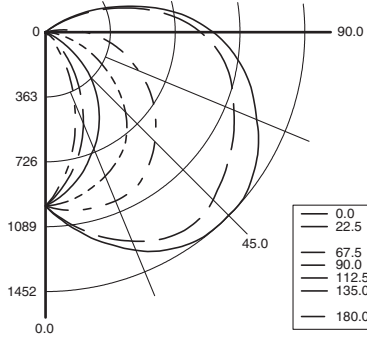


K7 Series



PHOTOMETRICS: For additional photometry, go to paramountlighting.com

Model K72324-R5, 4FT, Specular Reflector and Prismatic Acrylic Lens, 2 32W T8 Fluorescent Lamps, Lamp Lumen Rating = 3050



Coefficients of Utilization, Zonal Cavity Method

Floor Cavity Reflectance: 20%

RC	.8			.7			.5			.3			.1			0		
RW	.7	.5	.3	.7	.5	.3	.5	.3	.1	.5	.3	.1	.5	.3	.1	0		
R 0	73	73	73	70	70	70	65	65	65	61	61	61	57	57	57	55		
C 1	64	60	57	54	62	58	55	52	54	51	49	50	48	46	47	45	43	41
R 2	58	51	46	42	55	49	45	41	46	42	39	43	39	37	40	37	35	33
3	52	45	39	34	50	43	38	33	40	35	32	37	33	30	34	31	29	27
4	47	39	33	28	45	38	32	28	35	30	27	33	29	25	30	27	24	22
5	43	35	29	24	41	34	28	24	31	26	23	29	25	22	27	24	21	19
6	40	31	25	21	38	30	24	20	28	23	20	26	22	19	25	21	18	17
7	37	28	22	18	35	27	22	18	25	21	17	24	20	17	22	19	16	15
8	34	25	20	16	33	25	19	16	23	19	15	22	18	15	21	17	14	13
9	32	23	18	14	31	23	18	14	21	17	14	20	16	13	19	15	13	11
10	30	21	16	13	29	21	16	13	20	15	12	19	15	12	18	14	12	10

Zonal Lumen Summary

Zone	Lumens	% Lamp	% Luminaire
0-30	739	12.1	19.2
0-40	1209	19.8	31.5
0-60	2190	35.9	57
0-90	3381	55.4	88
90-120	449	7.4	11.7
90-130	461	7.6	12
90-150	462	7.6	12
90-180	462	7.6	12
0-180	3843	63	100

Total Luminaire Optical Efficiency = 63.0%
Spacing Criterion: 0° = 2.06, 90° = 1.25

CORNER LITE ORDERING INFORMATION:

SERIES	LAMP QTY	LAMP TYPE	LENS	OPT MATERIAL	OPTIONS	VOLTAGE
K7 Wet Location Cleanroom	1* 2* Standard		2 .125 Clear Acrylic (No Pattern) 3 .125 White Acrylic 4 .140 Prismatic Acrylic (P12) (base) 6 .125 Clear Polycarbonate (No Pattern) 7 .125 White Polycarbonate 8 .156 Prismatic Polycarbonate (P12) 9 .187 Tempered Glass (P62)		EM2 Bodine BDL700 WET/IOTA I-48-DL WET or similar EM3 Bodine BDL500 WET/IOTA I-320-DL WET or similar EM4 Bodine BDL900 WET/IOTA I-40-DL WET or similar EM8 Bodine BHD65U HAZ. LOC	120V-277V/60Hz STD 347V/60Hz
HK7* Hazardous	T2 Tandem		6 .125 Clear Polycarbonate (No Pattern) 7 .125 White Polycarbonate 8 .156 Prismatic Polycarbonate (P12)(base) 9 .187 Tempered Glass (P62)		BALLASTS (SPECIFY VOLTAGE) D1 Lutron Dimming (ECO-10) D2 Electronic Dimming D4 < 10% THD (Consult Factory) D8 Low-Temp Magnetic Ballast (N/A T8) D9 Magnetic Ballast E2 2 Electronic Ballasts E9 Rapid Start Electronic Ballast	50Hz & Other Voltages Available
SK7 Splash Zone	T4 2 Tandem				FUSING F1 GLR/HLR Fusing (Fast) F2 GMF/HLR Fusing (Slow)	
FK7 Food Zone					LENSING H2 .150 Extra Heavy Clear Acrylic H3 .150 Extra Heavy White Acrylic H5 .156 C73 Tempered Glass H6 .187 Clear Tempered Glass J0 Lamp Sleeves (Specify Color) J2 .060 Clear Acrylic Overlay J6 .080 Clear Polycarbonate Overlay J7 Louver (Specify) J9 RFI Lens (Specify Pattern) K3 .187 KSH-12 Acri-Tuf Acrylic K6 External Prisms (N/A Splash/Food Zones)	
18BX F18T5TT (13")	0°				MISC P9 Special Paint Color (Provide Paint Code & Chip) R5 Specular Aluminum Reflector S1 Special Material (Consult Agent) T3 Tamper Resistant (Hex w/pin STD, Others Avail) V3 No Silicone Sealant Used Y1 Nite Lite (Consult Agent) Y5 RFI Suppressors Y6 Flex-Loc® Lamp Holder (Med Bi-Pin Only: T8, T12)	
27BX F24-F27T5TT (16")	0°					
39BX F36-F39T5TT (19")	0°					
40BX F40T5TT (2FT)	0°					
50BX F50T5TT (2FT)	0°					
14T5 F14T5 (2FT)	0°					
17* F17T8 (2FT)	0°					
24T5H F24T5/HO (2FT)	0°					
25* F25T8 (3FT)	0°					
28T5 F28T5 (4FT)	0°					
32* F32T8 (4FT)	0°					
48H* F48T12/HO (4FT)	-20°					
48T8H F48T8/HO (4FT)	-20°					
54T5H F54T5/HO (4FT)	0°					
72H* F72T12/HO (6FT)	-20°					
72T8H F72T8/HO (6FT)	-20°					
96H* F96T12/HO (8FT)	-20°					
96T8* F96T8 (8FT) (59W) 2L Only	50°					
96T8H* F96T8/HO (8FT)	-20°					
TANDEM LAMPS						
Tandem lamps are tandem wired						
40BX F40T5TT (4FT)	0°					
50BX F50T5TT (4FT)	0°					
25 F25T8 (6FT)	0°					
28T5 F28T5 (8FT)	0°					
32 F32T8 (8FT)	0°					
48T8H F48T8/HO (8FT)	0°					
54T5H F54T5/HO (8FT)	0°					

* Lamp Type Available for Hazardous Location.

Other Wattages Available, Consult Factory.

NSF Food Processing Note:

Food Zone (F prefix) luminaires come in DIRECT CONTACT with food.
Splash Zone (S prefix) units may become soiled, but are outside the danger of recontamination.

Information subject to change without notice. Lamps supplied by others.

© 2010 Paramount Industries, Inc. P.O. Box 259 Crosswell, MI 48422

Project Information: