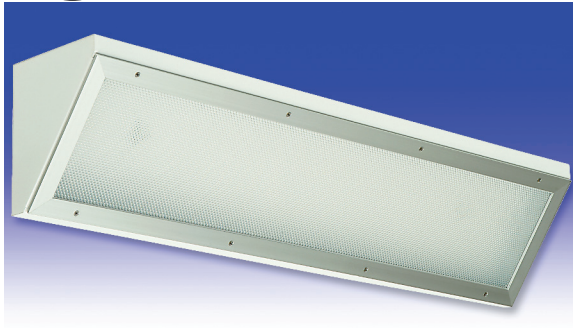


# K8 Series

**FLUORESCENT | SURFACE** 



**CORNER LITE APPLICATIONS:**

- UL/CUL Listed Wet Location
- Cleanroom (Classes 100-100,000; ISO Classes 5-9)
- UL/CUL Hazardous Location (Class I, Division 2; Groups A, B, C & D; Class II, Division 2; Groups F & G)
- NSF Certified Food Processing (Splash Zone, Food Zone)
- Industrial & Commercial
- Transit

**BENEFITS:**

- Luminaires adaptable to your specific needs

**FEATURES:**

- Premium electronic ballast standard
- Available in stainless steel construction
- Every luminaire tested with lamps to assure customer satisfaction
- 5 year limited warranty
- Proudly made in **USA**

## SPECIFICATIONS:

**HOUSING:**

Constructed of nominal 20GA (.036) zinc coated steel for unmatched corrosion protection. 1/2" threaded flange on back of luminaire provides wireway access. All seams are sealed with a long life acrylic sealant.

**Food Zone:** All external metal components of stainless steel (S3 option std).

**REFLECTOR:**

Fabricated of zinc coated steel, painted with a minimum reflectance of 88%.

**LENS FRAME:**

Exclusively designed, heavy duty, extruded, anodized aluminum with captive screws used to hold the lens frame tight to the housing. The frame is supported by two cables while servicing.

**Food Zone:** All external metal components of stainless steel (S3 option std).

**GASKETING:**

An extruded, ribbed vinyl gasket seals the lens into the frame; with our exclusive, mechanically held, extruded, silicone gasket used to seal the frame to the housing.

**Splash Zone:** Silicone sealant is used to seal the lens into the frame.

**Food Zone:** Silicone sealant is used to seal the lens into the frame, with extruded EPDM sealing the frame to the housing.

**FINISH:**

Painted surfaces are two mil white polyester enamel, special colors available.

**LENS:**

.140 extruded prismatic acrylic with 50% DR content for durability, smooth side out.

**Food Zone:** .156 extruded prismatic polycarbonate, smooth side out.

**ELECTRICAL:**

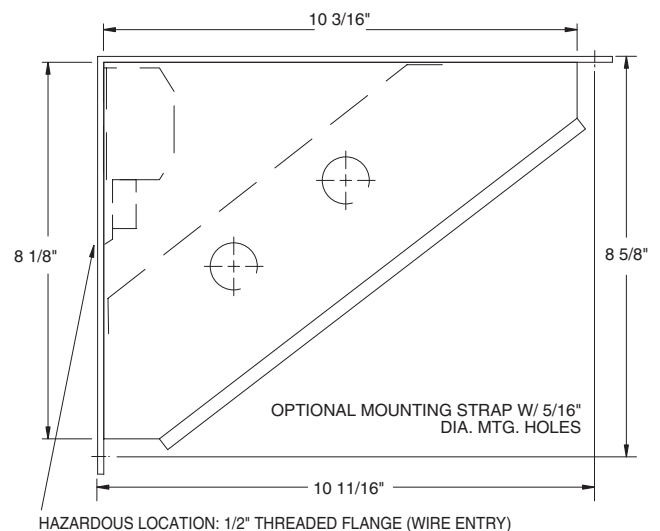
All ballasts and lampholders are UL Listed.

**MOUNTING:**

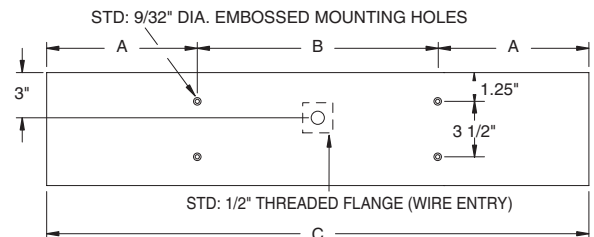
Surface or custom detail available for covered ceiling installations.

**TEMPERATURE CODE:**

Class I, Div. 2= T5 (100°C); Class II, Div. 2= T5 (100°C)



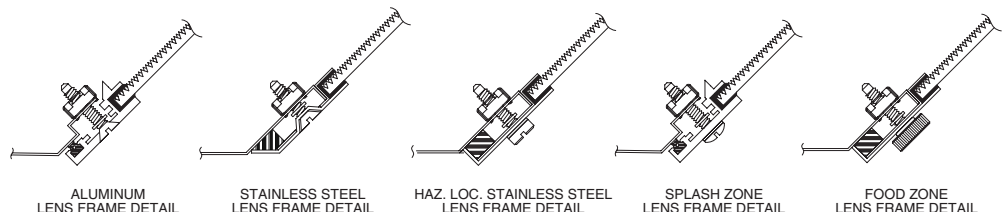
HAZARDOUS LOCATION: 1/2" THREADED FLANGE (WIRE ENTRY)



LENGTH	DIMENSIONS IN INCHES		
	A	B	C
13"	3 1/2	6	13
16"	3	10	16
19"	4 1/2	10	19
2 FT	4 3/32	16	24 3/16
3 FT	10 3/32	16	36 3/16
4 FT	8 3/32	32	48 3/16
6 FT	12 3/32	48	72 3/16
8 FT	16 3/32	64	96 3/16

## LENS FRAME DETAILS:

TAMPER RESISTANT SCREW HEADS  
OPTION SUFFIX- T3





Hazardous Location:



Food Processing:

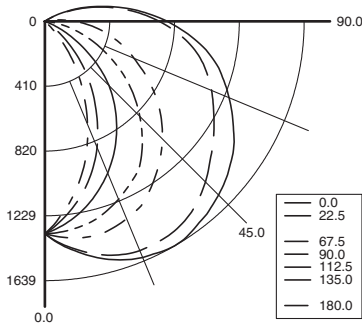


# K8 Series



**PHOTOMETRICS:** For additional photometry, go to [paramountlighting.com](http://paramountlighting.com)

Model K82324-R5, 4FT, Specular Reflector and Prismatic Acrylic Lens, 2 32W T8 Fluorescent Lamps, Lamp Lumen Rating = 3050



### Coefficients of Utilization, Zonal Cavity Method

Floor Cavity Reflectance: 20%

	.8			.7			.5			.3			.1			0
RC	.7	.5	.3	.7	.5	.3	.5	.3	.1	.5	.3	.1	.5	.3	.1	0
R 0	82	82	82	82	79	79	79	75	75	75	70	70	70	66	66	65
C 1	73	69	65	62	70	67	63	60	58	59	57	55	56	54	52	50
R 2	66	59	54	49	63	58	53	48	45	40	41	37	45	41	37	34
3	60	52	46	41	58	50	45	40	37	34	29	25	32	28	24	22
4	55	46	39	34	53	44	38	34	33	40	35	32	38	34	31	29
5	50	41	34	29	48	40	34	29	28	38	32	28	36	31	27	25
6	46	37	30	26	45	36	30	25	24	34	29	25	32	28	24	22
7	43	33	27	23	41	32	26	22	21	31	26	22	29	25	21	19
8	40	30	24	20	39	30	24	20	19	28	23	19	27	22	19	17
9	37	28	22	18	36	27	22	18	17	26	21	17	25	20	17	15
10	35	26	20	16	34	25	20	16	15	24	19	16	23	19	16	14

### Zonal Lumen Summary

Zone	Lumens	% Lamp	% Luminaire
0-30	1007	16.5	23.5
0-40	1616	26.5	37.8
0-60	2777	45.5	64.9
0-90	3962	64.9	92.6
90-120	313	5.1	7.3
90-130	315	5.2	7.4
90-150	315	5.2	7.4
90-180	315	5.2	7.4
0-180	4277	70.1	100

Total Luminaire Optical Efficiency = 70.1%

Spacing Criterion: 0° = 1.75, 90° = 1.26

## CORNER LITE ORDERING INFORMATION:

SERIES	LAMP QTY	LAMP TYPE
<b>K8</b> Wet Location	<b>1*</b>	
Cleanroom	<b>2*</b> Standard	
<b>HK8*</b> Hazardous	<b>3*</b>	
Splash Zone	<b>T2</b> Tandem	
<b>FK8</b> Food Zone	<b>T4</b> 2 Tandem	
	<b>T6</b> 3 Tandem	

<b>18BX</b> F18T5TT (13")	0°
<b>27BX</b> F24-F27T5TT (16")	0°
<b>39BX</b> F36-F39T5TT (19")	0°
<b>40BX</b> F40T5TT (2FT)	0°
<b>50BX</b> F50T5TT (2FT)	0°
<b>14T5</b> F14T5 (2FT)	0°
<b>17*</b> F17T8 (2FT)	0°
<b>24T5H</b> F24T5/HO (2FT)	0°
<b>25*</b> F25T8 (3FT)	0°
<b>28T5</b> F28T5 (4FT)	0°
<b>32*</b> F32T8 (4FT)	0°
<b>48H*</b> F48T12/HO (4FT)	-20°
<b>48T8H</b> F48T8/HO (4FT)	-20°
<b>54T5H</b> F54T5/HO (4FT)	0°
<b>72H*</b> F72T12/HO (6FT)	-20°
<b>72T8H</b> F72T8/HO (6FT)	-20°
<b>96H*</b> F96T12/HO (8FT)	-20°
<b>96T8*</b> F96T8 (8FT) (59W) <b>2L Only</b>	50°
<b>96T8H*</b> F96T8/HO (8FT)	-20°

#### TANDEM LAMPS

Tandem lamps are tandem wired

<b>40BX</b> F40T5TT (4FT)	0°
<b>50BX</b> F50T5TT (4FT)	0°
<b>25</b> F25T8 (6FT)	0°
<b>28T5</b> F28T5 (8FT)	0°
<b>32</b> F32T8 (8FT)	0°
<b>48T8H</b> F48T8/HO (8FT)	0°
<b>54T5H</b> F54T5/HO (8FT)	0°

\* Lamp Type Available for Hazardous Location.

LENS	OPT MATERIAL
<b>2</b> .125 Clear Acrylic (No Pattern)	
<b>3</b> .125 White Acrylic	
<b>4</b> .140 Prismatic Acrylic (P12) (base)	
<b>6</b> .125 Clear Polycarbonate (No Pattern)	
<b>7</b> .125 White Polycarbonate	
<b>8</b> .156 Prismatic Polycarbonate (P12)	
<b>9</b> .187 Tempered Glass (P62)	

#### LENSES AVAILABLE FOR FOOD ZONE

<b>6</b> .125 Clear Polycarbonate (No Pattern)
<b>7</b> .125 White Polycarbonate
<b>8</b> .156 Prismatic Polycarbonate (P12) (base)
<b>9</b> .187 Tempered Glass (P62)

- \*S2 Stainless Steel Housing
- \*S3 Stainless Steel Exterior
- \*S5 Stainless Steel Lens Frame Only

\* Note:  
If Stainless Steel is ordered,  
304 SS Standard  
316 SS and other materials  
available, consult agent.

OPTIONS	VOLTAGE
---------	---------

**EMERGENCY (SPECIFY VOLTAGE)**  
**EM2** Bodine BDL700 WET/IOTA I-48-DL WET or similar  
**EM3** Bodine BDL500 WET/IOTA I-320-DL WET or similar  
**EM4** Bodine BDL900 WET/IOTA I-40-DL WET or similar  
**EM8** Bodine BHD65U HAZ. LOC.

#### BALLASTS (SPECIFY VOLTAGE)

- D1** Lutron Dimming ECO-10
- D2** Electronic Dimming
- D4** < 10% THD (Consult Factory)
- E0** Low-Temp Electronic (N/A T12R5 & VHO)
- E2** 2 Electronic Ballasts
- E3** 3 Electronic Ballasts
- E9** Rapid Start Electronic Ballast

#### FUSING

- F1** GLR/HLR Fusing (Fast)
- F2** GMF/HLR Fusing (Slow)

#### LENSING

- H2** .150 Extra Heavy Clear Acrylic
- H3** .150 Extra Heavy White Acrylic
- H5** .156 C73 Tempered Glass
- H6** .187 Clear Tempered Glass
- J0** Lamp Sleeves (Specify Color)
- J2** .060 Clear Acrylic Overlay
- J6** .080 Clear Polycarbonate Overlay
- J7** Louver (Specify)
- J9** RFI Lens (Specify Pattern)
- K3** .187 KSH-12 Acri-Tuf Acrylic
- K6** External Prisms (N/A Splash/Food Zones)

#### MISC

- P9** Special Paint Color (Provide Paint Code & Chip)
- R5** Specular Aluminum Reflector
- S1** Special Material (Consult Agent)
- T3** Tamper Resistant (Hex w/pin STD, Others Avail)
- V3** No Silicone Sealant Used
- W4** Inboard Outboard Wiring (Dual Switching)
- Y1** Nite Lite (Consult Agent)
- Y5** RFI Suppressors
- Y6** Flex-Loc® Lamp Holder (Med Bi-Pin Only: T8, T12)

Add hyphens between options

Other Wattages Available, Consult Factory.

#### NSF Food Processing Note:

Food Zone (F prefix) luminaires come in DIRECT CONTACT with food.  
 Splash Zone (S prefix) units may become soiled, but are outside the danger of recontamination.

Information subject to change without notice. Lamps supplied by others.

© 2010 Paramount Industries, Inc. P.O. Box 259 Crosswell, MI 48422

#### Project Information: