



# L5 Series

FLUORESCENT | SURFACE **S**



**LUME APPLICATIONS:**

- UL/CUL Listed Damp Location
- Industrial & Commercial

**BENEFITS:**

- Luminaires adaptable to your specific needs

**FEATURES:**

- 50% DR high-impact acrylic lens
- Premium electronic ballast standard
- Available in stainless steel construction
- Every luminaire tested with lamps to assure customer satisfaction
- 5 year limited warranty
- Proudly made in **USA**

## SPECIFICATIONS:

**HOUSING:**

Constructed of 20GA (.036) zinc coated steel for unmatched corrosion protection. Knockouts are provided on ends of the luminaire for wireway access.

**REFLECTOR:**

Fabricated of zinc coated steel, painted with a minimum reflectance of 88%.

**GASKETING:**

Extruded EPDM is used to seal the lens to the housing.

**FINISH:**

Painted surfaces are two mil white polyester enamel, special colors available.

**LENS:**

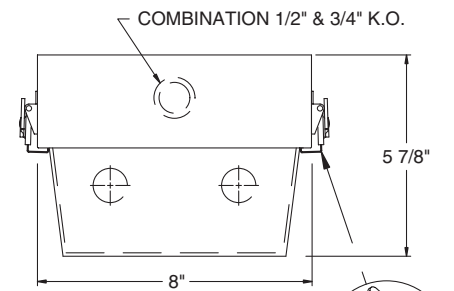
High-impact .125 extruded acrylic with 50% DR content for durability. Longitudinal prisms along the side combined with a bottom prismatic pattern control uplight and glare. Unique cam action latches secure the lens tight to the housing, with stainless steel safety wires to support the lens while servicing.

**ELECTRICAL:**

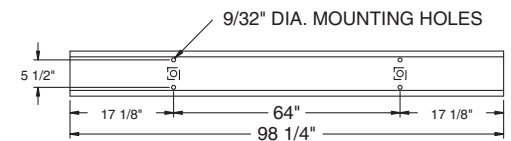
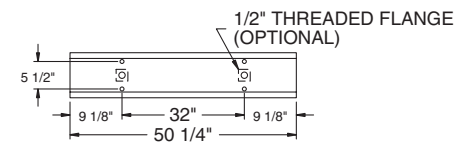
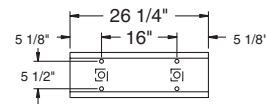
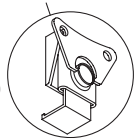
All ballasts and lampholders are UL Listed.

**MOUNTING:**

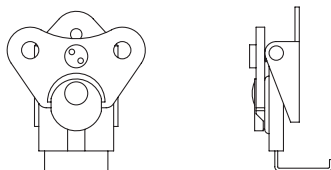
Surface, chain, pendant or custom detail available for covered ceiling installations. Surface mounted HO luminaires require a minimum 1 1/2" clearance (*Bracket kit supplied*).



CAM-LATCH (EACH SIDE)



TAMPER-PROOF LATCH ASSEMBLY

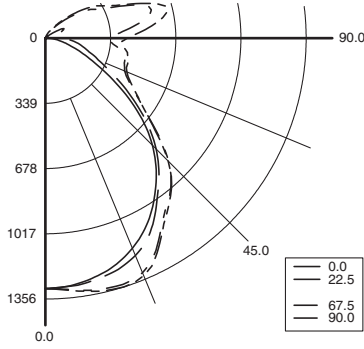




# L5 Series

**PHOTOMETRICS:** For additional photometry, go to [paramountlighting.com](http://paramountlighting.com)

Model L52325, 4FT, White Painted Interior and Light-controlled Acrylic Lens, 2 32W T8 Fluorescent Lamps, Lamp Lumen Rating = 3050



### Coefficients of Utilization, Zonal Cavity Method

Floor Cavity Reflectance: 20%

RC	.8			.7			.5			.3			.1			0
RW	.7	.5	.3	.1	.7	.5	.3	.1	.5	.3	.1	.5	.3	.1	0	
R 0	93	93	93	93	89	89	89	89	81	81	81	73	73	73	64	
C 1	83	79	75	72	79	76	72	69	69	66	64	63	60	58	57	
R 2	76	69	63	58	72	66	60	56	60	56	52	55	51	48	50	
3	69	60	54	48	65	58	52	47	53	48	44	48	44	41	44	
4	63	53	46	41	60	51	45	40	47	41	37	43	38	35	39	
5	58	48	40	35	55	46	39	34	42	36	32	39	34	30	35	
6	54	43	36	31	51	41	35	30	38	32	28	35	30	27	32	
7	50	39	32	27	47	37	31	26	34	29	25	32	27	23	29	
8	46	35	29	24	44	34	28	23	32	26	22	29	24	21	27	
9	43	32	26	21	41	31	25	21	29	24	20	27	22	19	25	
10	40	30	23	19	38	29	23	19	27	22	18	25	20	17	23	

### Zonal Lumen Summary

Zone	Lumens	% Lamp	% Luminaire
0-30	1063	17.4	21.3
0-40	1723	28.2	34.5
0-60	2913	47.8	58.4
0-90	3911	64.1	78.4
90-120	860	14.1	17.2
90-130	996	16.3	20
90-150	1072	17.6	21.5
90-180	1077	17.7	21.6
0-180	4988	81.8	100

Total Luminaire Optical Efficiency = 81.8%  
Spacing Criterion: 0° = 1.22, 90° = 1.33

## LUME ORDERING INFORMATION:

SERIES	LAMP QTY	LAMP TYPE	LENS	OPT MATERIAL	OPTIONS	VOLTAGE
<b>L5</b> Damp Location	1 2 T2 Tandem T4 2 Tandem		2 .125 Clear Acrylic (No Pattern) 4&8 FT Only 3 .125 White Acrylic (4&8 FT Only) 5 Square Prismatic Light Control Acrylic (base)		<b>EMERGENCY (SPECIFY VOLTAGE)</b> EM2 Bodine BDL700 WET/IOTA I-48-DL WET or similar EM3 Bodine BDL500 WET/IOTA I-320-DL WET or similar EM4 Bodine BDL900 WET/IOTA I-40-DL WET or similar <b>BALLASTS (SPECIFY VOLTAGE)</b> D1 Lutron Dimming ECO-10 D2 Electronic Dimming D4 < 10% THD (Consult Factory) E0 Low-Temp Electronic (N/A T12 RS & VH0) E2 2 Electronic Ballasts E9 Rapid Start Electronic Ballast <b>FUSING</b> F1 GLR/HLR Fusing (Fast) F2 GMF/HLR Fusing (Slow) <b>LENSING</b> J0 Lamp Sleeves (Specify Color) J8 Wire Guard <b>MOUNTING</b> M1 Pendant Mount (Pendants By Others) M2 Mounting Bracket Kit (Surface / Chain) M6 Angled Mounting Bracket (Consult Agent) <b>MISC</b> P9 Special Paint Color (Provide Paint Code & Chip) S1 Special Material (Consult Agent) T1 Stainless Steel Latches T3 Tamper Resistant Latches (Please Specify) W3 Remote Ballast Box Y6 Flex-Loc® Lamp Holder (Med Bi-Pin Only: T8, T12)	120V-277V/60Hz STD 347V/60Hz 50Hz & Other Voltages Available
<b>40BX</b> F40T5TT (2FT)	0°					
<b>50BX</b> F50T5TT (2FT)	0°					
<b>14T5</b> F14T5 (2FT)	0°					
<b>17</b> F17T8 (2FT)	0°					
<b>28T5</b> F28T5 (4FT)	0°					
<b>32</b> F32T8 (4FT)	0°					
<b>48H</b> F48T12/HO (4FT)	-20°					
<b>48T8H</b> F48T8/HO (4FT)	-20°					
<b>54T5H</b> F54T5/HO (4FT)	0°					
<b>96H</b> F96T12/HO (8FT)	-20°					
<b>96T8</b> F96T8 (8FT) (59W)	50°					
<b>96T8H</b> F96T8/HO (8FT)	-20°					
<b>TANDEM LAMPS</b>						
Tandem lamps are tandem wired						
<b>28T5</b> F28T5 (8FT)	0°					
<b>32</b> F32T8 (8FT)	0°					

\*S3 Stainless Steel Exterior  
\* Note:  
If Stainless Steel is ordered,  
304 SS Standard  
316 SS and other materials  
available, consult agent.

Add hyphens between options

Other Wattages Available, Consult Factory.

**Project Information:**

Information subject to change without notice. Lamps supplied by others.

© 2010 Paramount Industries, Inc. P.O. Box 259 Crosswell, MI 48422