

T1 E&G Series

FLUORESCENT | SURFACE **S**



ENCLOSED & GASKETED INDUSTRIAL LITE APPLICATIONS:

- UL/CUL Listed Damp Location
- Industrial & Commercial

BENEFITS:

- Luminaires adaptable to your specific needs

FEATURES:

- Easy access to lamps, unique lift off lens frame & cam action latches
- Premium electronic ballast standard
- Every luminaire tested with lamps to assure customer satisfaction
- 5 year limited warranty
- Proudly made in **USA**

SPECIFICATIONS:

HOUSING:

Constructed of 20GA (.036) zinc coated steel for unmatched corrosion protection. Two welded, tapered, threaded flanges on the top of the housing provides a sealed wireway access. All seams are sealed with long life acrylic sealant.

REFLECTOR:

Fabricated of zinc coated steel, painted with a minimum reflectance of 88%.

LENS FRAME:

Unique "Lift Off" designed frame is fabricated of nominal 20GA (.036) stainless steel, with cam action latches to hold the lens frame tight to the housing.

GASKETING:

An extruded ribbed vinyl gasket seals the lens into the frame and extruded EPDM is used to seal the lens frame to the housing.

FINISH:

Painted surfaces are two mil of white polyester enamel.

LENS:

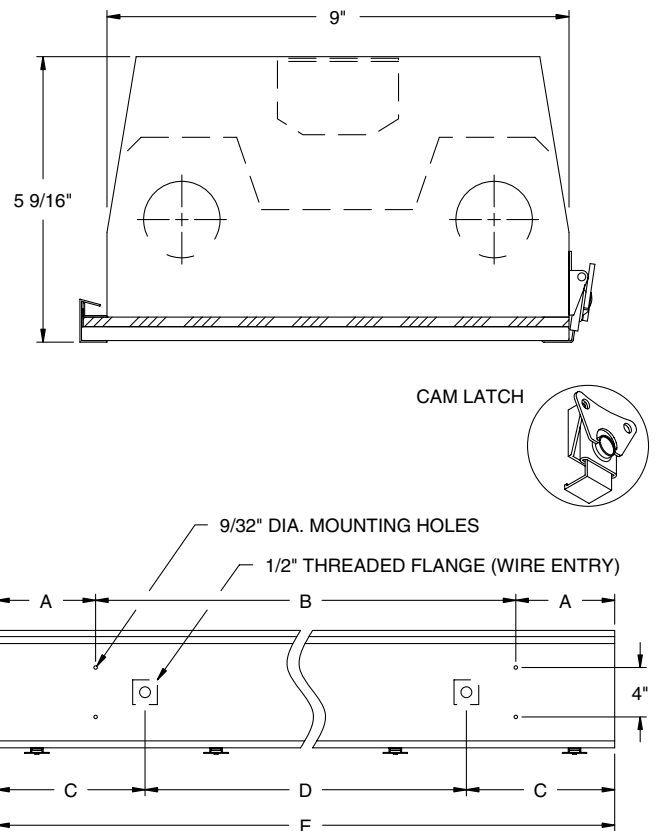
.125 white translucent cell cast virgin acrylic, smooth side out.

ELECTRICAL:

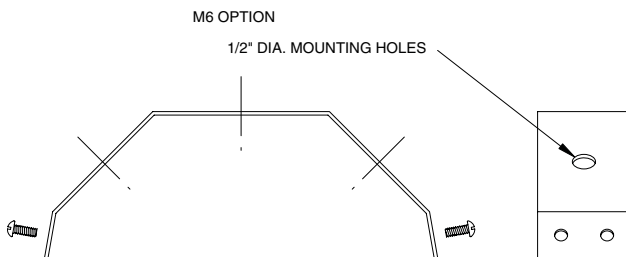
All ballasts and lampholders are UL Listed.

MOUNTING:

Surface, chain or custom detail for covered ceiling installations. For further information, contact Sales Representative.



LENGTH	DIMENSIONS IN INCHES				
	A	B	C	D	E
2 FT	4	16	6	12	24
4 FT	8	32	12	24	48
8 FT	16	64	12	72	96



REV 1/05

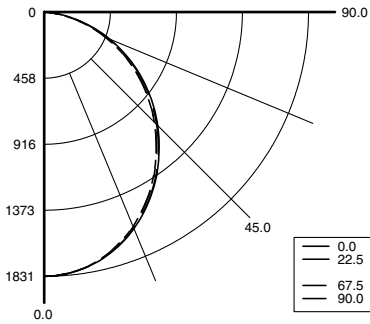


T1 E&G Series



PHOTOMETRICS:

Model T12323, 4FT, Specular Reflector and White Acrylic Lens, 2 32W T8 Fluorescent Lamps, Lamp Lumen Rating = 3050



Coefficients of Utilization, Zonal Cavity Method

Floor Cavity Reflectance: 20%

RC	.8				.7				.5			.3			.1			0
RW	.7	.5	.3	.1	.7	.5	.3	.1	.5	.3	.1	.5	.3	.1	.5	.3	.1	0
R 0	91	91	91	91	89	89	89	89	85	85	85	81	81	81	78	78	78	76
C 1	84	80	77	74	82	78	76	73	75	73	71	72	70	68	69	68	66	65
R 2	76	70	65	61	74	69	64	60	66	62	59	63	60	57	61	58	56	54
3	70	62	56	51	68	60	55	50	58	53	49	56	52	49	54	51	48	46
4	64	55	48	43	62	54	48	43	52	46	42	50	45	42	48	44	41	39
5	59	49	42	37	57	48	42	37	47	41	37	45	40	36	44	39	36	34
6	54	44	37	33	53	43	37	32	42	36	32	41	36	32	40	35	32	30
7	50	40	33	29	49	39	33	29	38	33	28	37	32	28	36	32	28	27
8	47	37	30	26	46	36	30	26	35	29	25	34	29	25	33	29	25	24
9	44	34	27	23	43	33	27	23	32	27	23	31	26	23	31	26	23	21
10	41	31	25	21	40	31	25	21	30	24	21	29	24	21	28	24	21	19

Zonal Lumen Summary

Zone	Lumens	% Lamp	% Luminaire
0-30	1382	22.6	29.5
0-40	2223	36.4	47.5
0-60	3801	62.3	81.2
0-90	4682	76.8	100
90-120	0	0	0
90-130	0	0	0
90-150	0	0	0
90-180	0	0	0
0-180	4682	76.8	100

Total Luminaire Optical Efficiency = 76.8%
Spacing Criterion: 0° = 1.19, 90° = 1.18

E&G INDUSTRIAL LUMINAIRE ORDERING INFORMATION:

T1 SERIES	2 LAMP QTY	LAMP TYPE	LENS	OPTIONS	VOLTAGE
T1 Damp Location		<ul style="list-style-type: none"> 2 .125 Clear Acrylic (No Pattern) 3 .125 White Acrylic (base) 4 .140 Prismatic Acrylic (P12) 6 .125 Clear Polycarbonate (No Pattern) 7 .125 White Polycarbonate 8 .156 Prismatic Polycarbonate (P12) 		EMERGENCY B1 Bodine BDL700 (0-50°C) B2 Bodine BDL500 (0-50°C) N/A 2FT B3 Bodine BDL900 (0-50°C) BALLASTS D4 < 10% THD (Consult Factory) D8 Low-Temp Magnetic Ballast (N/A T8) D9 Magnetic Ballast E2 2 Electronic Ballasts E9 Rapid Start Electronic Ballast FUSING F1 GLR/HLR Fusing (Fast) F2 GMF/HLR Fusing (Slow) MISC K6 External Prisms M6 Angled Mounting Bracket (Consult Agent) P9 Special Paint Color (Provide Paint Code & Chip) <i>Add hyphens between options</i>	120V/60Hz Standard 277V/60Hz 347V/60Hz 50Hz & Other Voltages Available
17 F17T8 (2FT) 0° 32 F32T8 (4FT) 0° 48H F48T12/HO (4FT) -20° 96H F96T12/HO (8FT) -20° 96T8 F96T8 (8FT) (59W) 50° 96T8H F96T8/HO (8FT) -20°					

Other Wattages Available, Consult Factory.

Project Information:

Information subject to change without notice. Lamps supplied by others.

© 2005 Paramount Industries, Inc. P.O. Box 259 Crosswell, MI 48422