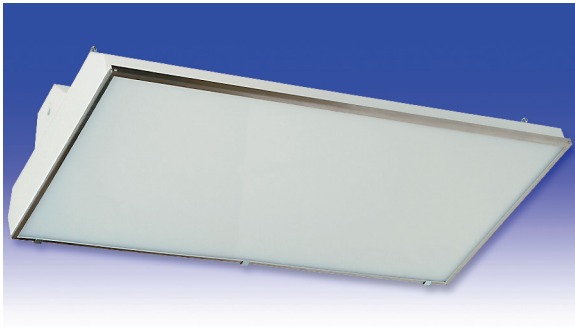


T4 Series

FLUORESCENT | SURFACE 



ASSEMBLY LINE LITE

APPLICATIONS:

- UL/CUL Listed
Damp Location
- Industrial & Commercial

BENEFITS:

- Luminaires adaptable to your specific needs

FEATURES:

- Easy access to lamps, unique lift off lens frame & cam action latches
- Premium electronic ballast standard
- Every luminaire tested with lamps to assure customer satisfaction
- 5 year limited warranty
- Proudly made in **USA**

SPECIFICATIONS:

HOUSING:

Constructed of 18GA (.048) zinc coated steel for unmatched corrosion protection. Two welded, tapered, threaded hubs on the ends of the housing provides a sealed wireway access. All seams are sealed with long life acrylic sealant.

LENS FRAME:

Unique "Lift Off" designed frame is fabricated of nominal 20GA (.036) stainless steel, with cam action latches to hold the lens frame tight to the housing.

GASKETING:

An extruded ribbed vinyl gasket seals the lens into the frame and extruded EPDM is used to seal the lens frame to the housing.

FINISH:

Painted surfaces are two mil of white polyester enamel, special colors are available.

LENS:

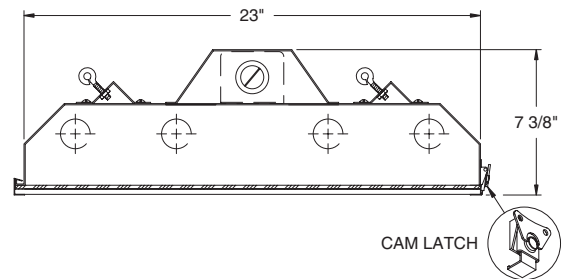
.125 white translucent cell cast virgin acrylic.

ELECTRICAL:

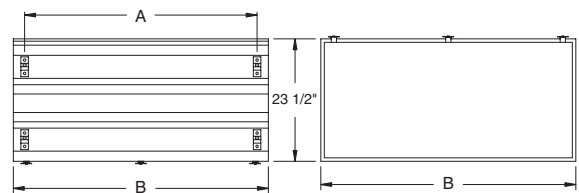
All ballasts and lampholders are UL Listed.

MOUNTING:

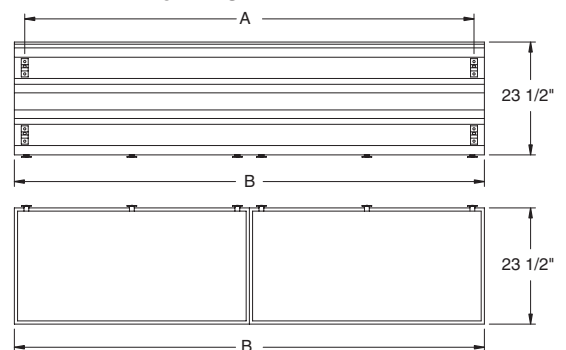
Chain or custom detail available.



4 FT LUMINAIRE



8 FT LUMINAIRE



LENGTH	DIMENSIONS IN INCHES	
	A	B
4 FT	44 11/16	48 1/8
8 FT	90 11/16	96 1/8

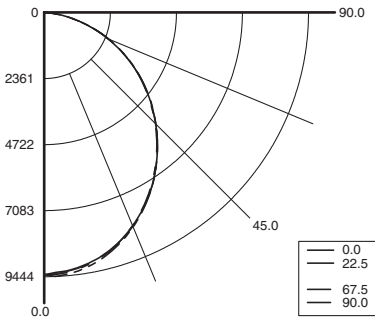


T4 Series



PHOTOMETRICS: For additional photometry, go to paramountlighting.com

Model T4496H3-E0, 8FT, Specular Reflector and White Acrylic Lens, 4 96W T12/HO Fluorescent Lamps, Lamp Lumen Rating = 8350



Coefficients of Utilization, Zonal Cavity Method

Floor Cavity Reflectance: 20%

RC	.8				.7				.5				.3				.1				0
RW	.7	.5	.3	.1	.7	.5	.3	.1	.5	.3	.1	.5	.3	.1	.5	.3	.1	.5	.3	.1	0
R 0	86	86	86	86	84	84	84	84	80	80	80	77	77	77	73	73	73	72	72	72	72
C 1	79	75	72	70	77	74	71	69	71	68	66	68	66	64	65	64	62	61	61	61	61
R 2	72	66	61	57	70	64	60	56	62	58	55	60	56	54	57	55	53	51	51	51	51
3	65	58	52	48	64	57	51	47	55	50	46	53	49	46	51	48	45	43	43	43	43
4	60	51	45	40	58	50	45	40	49	44	40	47	43	39	45	42	38	37	37	37	37
5	55	46	40	35	54	45	39	35	44	38	34	42	38	34	41	37	34	32	32	32	32
6	51	41	35	30	50	41	35	30	39	34	30	38	33	30	37	33	30	28	28	28	28
7	47	38	31	27	46	37	31	27	36	31	27	35	30	26	34	30	26	25	25	25	25
8	44	34	28	24	43	34	28	24	33	28	24	32	27	24	31	27	23	22	22	22	22
9	41	31	26	22	40	31	25	22	30	25	21	29	25	21	29	24	21	20	20	20	20
10	39	29	23	20	38	29	23	20	28	23	19	27	23	19	27	22	19	18	18	18	18

Zonal Lumen Summary

Zone	Lumens	% Lamp	% Luminaire
0-30	7067	21.2	29.3
0-40	11383	34.1	47.2
0-60	19522	58.4	80.9
0-90	24138	72.3	100
90-120	0	0	0
90-130	0	0	0
90-150	0	0	0
90-180	0	0	0
0-180	24138	72.3	100

Total Luminaire Optical Efficiency = 72.3%
Spacing Criterion: 0° = 1.19, 90° = 1.19

ASSEMBLY LINE LITE ORDERING INFORMATION:

T4 SERIES	4 LAMP QTY	LAMP TYPE	LENS	OPTIONS	VOLTAGE
T4 Damp		<ul style="list-style-type: none"> 2 .125 Clear Acrylic (No Pattern) 3 .125 White Acrylic (base) 4 .140 Prismatic Acrylic (P12) 6 .125 Clear Polycarbonate (No Pattern) 7 .125 White Polycarbonate 8 .156 Prismatic Polycarbonate (P12) 		<p>FUSING</p> <ul style="list-style-type: none"> F1 GLR/HLR Fusing (Fast) F2 GMF/HLR Fusing (Slow) F3 HPS/FEE Fusing (External) <p>MISC</p> <ul style="list-style-type: none"> P9 Special Paint Color (Provide Paint Code & Chip) R5 Specular Aluminum Reflector <p>Add hyphens between options</p>	<p>120V-277V/60Hz STD 347V/60Hz</p> <p>50Hz & Other Voltages Available</p>
<ul style="list-style-type: none"> 48H F48T12/HO (4FT) -20° 48T8H F48T8/HO (4FT) -20° 96H F96T12/HO (8FT) -20° 96T8 F96T8 (8FT) (59W) 50° 96T8H F96T8/HO (8FT) -20° 					

Other Wattages Available, Consult Factory.

Project Information:

Information subject to change without notice. Lamps supplied by others.

© 2010 Paramount Industries, Inc. P.O. Box 259 Crosswell, MI 48422