

# Y2 Series

FLUORESCENT | SURFACE **S**



**GYMNASIUM LITE**

**APPLICATIONS:**

- UL/CUL Listed Dry Location
- Industrial & Commercial

**BENEFITS:**

- Luminaires adaptable to your specific needs

**FEATURES:**

- Premium electronic ballast standard
- Easy maintenance: Spring release mechanism allows lowering of the reflector assembly to a chain supported position
- Every luminaire tested with lamps to assure customer satisfaction
- 5 year limited warranty
- Proudly made in **USA**

**SPECIFICATIONS:**

**HOUSING:**

Constructed of nominal 20GA (.036) zinc coated steel for unmatched corrosion protection with ends welded into place. Knockouts on the ends of the luminaire provide wireway access. The housing contains a top opening into which the ballast mounts and is covered by a zinc coated steel plate.

**LOUVER & REFLECTOR ASSEMBLY:**

Manufactured of anodized aluminum of a double parabolic design with wedge shaped parabolic baffles. The reflector offers a minimum reflectance of 70%. Safety chains mounted at each end support the assembly while lowered for service.

**LIGHT CONTROL:**

A side shielding of 38° and a longitudinal shielding of 40° is obtained.

**FINISH:**

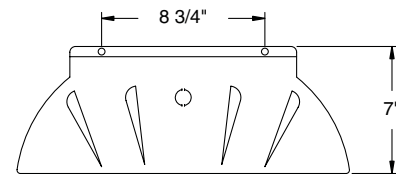
Painted surfaces are two mil of white polyester enamel.

**ELECTRICAL:**

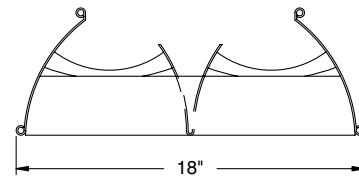
All ballasts and lampholders are UL Listed.

**MOUNTING:**

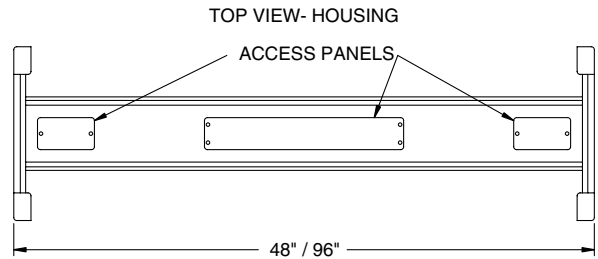
Chain, pendant or custom detail available.



END VIEW- HOUSING



END VIEW- LOUVER



TOP VIEW- HOUSING

ACCESS PANELS

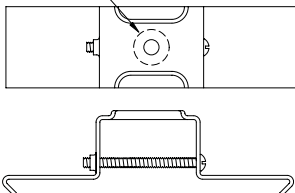
48" / 96"

SIDE VIEW- LOUVERED REFLECTOR



**M4 OPTION**

HOLE FOR 3/8" STEM, HOOK, OR 1/2" CONDUIT



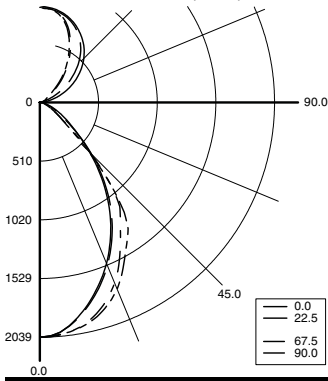
REV 1/05



# Y2 Series

## PHOTOMETRICS:

Model Y2248H0-E0, 4FT, White Painted Interior and 22 Cell Diffuse Louver, 2 55W T12/HO Fluorescent Lamps, Lamp Lumen Rating = 3850



### Coefficients of Utilization, Zonal Cavity Method

Floor Cavity Reflectance: 20%

	.8				.7				.5			.3			.1			0
RC																		
RW	.7	.5	.3	.1	.7	.5	.3	.1	.5	.3	.1	.5	.3	.1	.5	.3	.1	0
R 0	65	65	65	65	61	61	61	61	54	54	54	47	47	47	41	41	41	39
C 1	61	58	57	55	57	55	54	52	49	48	47	44	43	42	38	38	37	35
R 2	56	52	49	47	53	50	47	45	44	42	41	40	38	37	35	34	33	31
3	52	47	43	40	49	45	41	39	40	38	36	36	34	33	32	31	30	28
4	48	43	38	35	45	41	37	34	37	34	31	33	31	29	30	28	27	25
5	45	39	34	31	42	37	33	30	33	30	28	30	28	26	27	25	24	22
6	42	35	31	28	39	34	30	27	31	27	25	28	25	23	25	23	22	20
7	39	32	28	25	37	31	27	24	28	25	23	26	23	21	23	21	20	18
8	36	30	25	22	34	28	25	22	26	23	21	24	21	19	22	20	18	17
9	34	27	23	20	32	26	22	20	24	21	19	22	20	18	20	18	17	15
10	32	25	21	19	30	24	21	18	22	19	17	21	18	16	19	17	15	14

### Zonal Lumen Summary

Zone	Lumens	% Lamp	% Luminaire
0-30	1404	18.2	31
0-40	2114	27.4	46.7
0-60	2837	36.8	62.6
0-90	2993	38.9	66.1
90-120	146	1.9	3.2
90-130	328	4.3	7.2
90-150	930	12.1	20.5
90-180	1536	20	33.9
0-180	4529	58.8	100

Total Luminaire Optical Efficiency = 58.8%  
Spacing Criterion: 0° = 0.96, 90° = 1.11

## GYMNASIUM LITE ORDERING INFORMATION:

<b>Y2</b> SERIES	<b>2</b> LAMP QTY	LAMP TYPE	<b>0</b> LOUVER	OPTIONS	VOLTAGE
Y2 Dry Location			0 Louver	<b>EMERGENCY</b> <b>B4</b> Bodine B70A Dry/IOTA I-48 <b>B5</b> Bodine B50 Dry/IOTA I-80 <b>FUSING</b> <b>F1</b> GLR/HLR Fusing (Fast) <b>F2</b> GMF/HLR Fusing (Slow) <b>F3</b> HPS/FEE Fusing (External) <b>MOUNTING</b> <b>M1</b> Pendant Mount (Pendants By Others) <b>M4</b> Ice Tong Hangers <i>Add hyphens between options</i>	<b>120V/60Hz</b> Standard 277V/60Hz 347V/60Hz 50Hz & Other Voltages Available
<b>48H</b> F48T12/HO (4FT) -20°	<b>48T8H</b> F48T8/HO (4FT) -20°	<b>96H</b> F96T12/HO (8FT) -20°	<b>96T8</b> F96T8 (8FT) (59W) 50°	<b>96T8H</b> F96T8/HO (8FT) -20°	

Other Wattages Available, Consult Factory.

### Project Information:

Information subject to change without notice. Lamps supplied by others.

© 2005 Paramount Industries, Inc. P.O. Box 259 Crosswell, MI 48422