

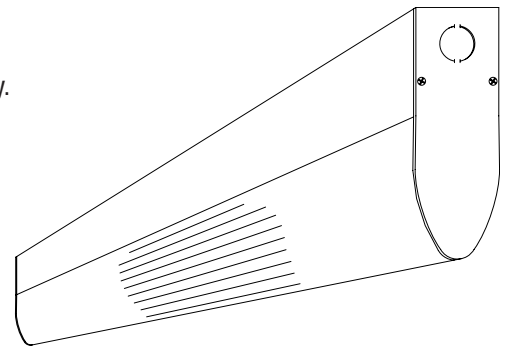
GENERAL:

1. Before starting the installation, make sure all electricity has been turned off and electrical breaker has been locked out and tagged out.
2. To ensure the success of the installation, be sure to read these instructions and review the diagrams thoroughly before beginning.
3. All electrical connections must be in accordance with local codes, ordinances, or the National Electrical Code.
4. All luminaires to be installed by a qualified electrician.

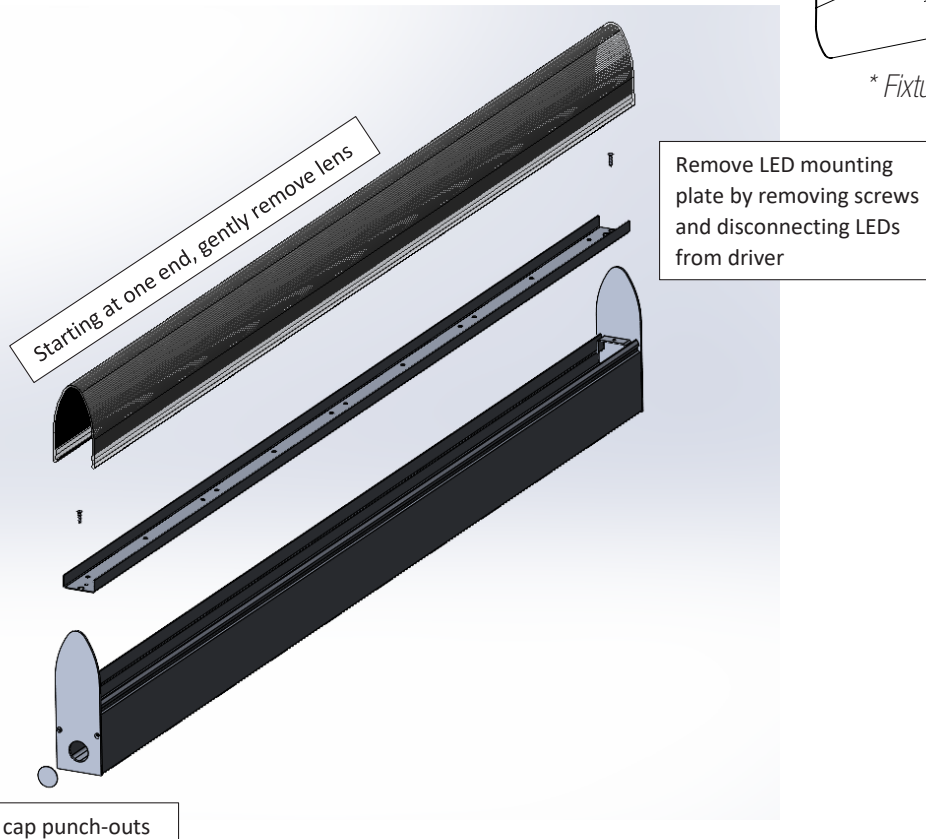
NOTE: The important safeguards and instructions appearing in this manual are not meant to cover all possible conditions and situations that may occur.

INSTALLATION SURFACE MOUNT IN-ROW

1. Lightly pry lens away from housing starting at one end, then remove the lens by pulling firmly.
2. Remove LED mounting plate by removing screws and disconnecting arrays from driver.
3. Remove end cap punch-outs for side wire access.



** Fixture intended for Dry/Damp location.*



Cleaning Instructions: Wipe luminaire with a soft cloth slightly dampened with warm, soapy water. On stainless steel units, tightly adhering deposits may be removed by using a stainless steel polishing powder. Never use steel wool or steel brushes on stainless steel. Always rub in the direction of the polish lines.

Mounting and electrical hardware not supplied by Paramount Industries unless otherwise noted.

iiPMA1

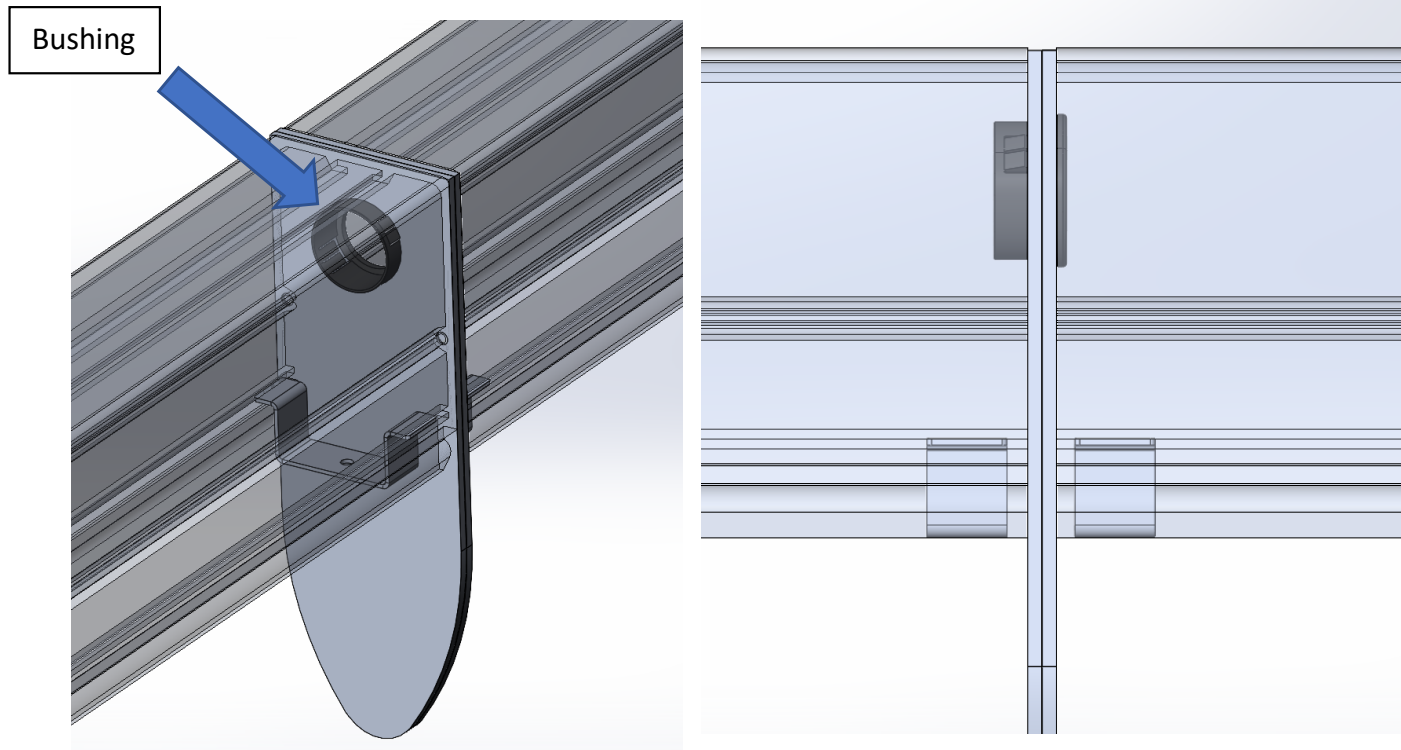


SUGGESTED MOUNTING FOR AEROLUX LUMINAIRES

Surface Mount In-Row, Series A1

INSTALLATION (Continued)

4. Mount luminaires to surface in line with each other utilizing mounting holes. Be sure to shim uneven surfaces. Luminaires must be aligned end to end so that access holes are aligned.
5. Install Heyco Snap Bushing (SB 875-11) as shown below to secure in-row luminaires together.



Shown: 2 Sections End on End

6. Make necessary wiring connections through the nipple fitting. Refer to the wiring diagram on the driver for proper connection. Make sure all fixtures are grounded together.
7. Re-connect arrays to driver, attach LED mounting plate and replace lens.

Cleaning Instructions: Wipe luminaire with a soft cloth slightly dampened with warm, soapy water. On stainless steel units, tightly adhering deposits may be removed by using a stainless steel polishing powder. Never use steel wool or steel brushes on stainless steel. Always rub in the direction of the polish lines.

Mounting and electrical hardware not supplied by Paramount Industries unless otherwise noted.

iiPMA1