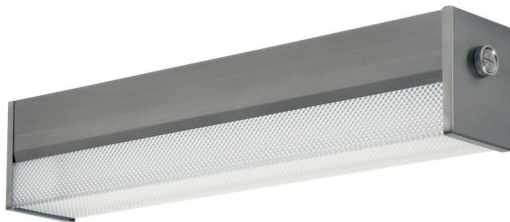


C3 Series

Craft Lite®

Extreme Series | Surface Mount



Food Processing:



Hazardous Location:



APPLICATIONS:

- ETL/cETL Listed Wet Location
- ETL/cETL Hazardous Location (Class I, Division 2; Groups A,B,C & D Class II, Division 2; Groups F & G)
- NSF Certified Food Processing (Splash Zone, Food Zone)
- Industrial & Commercial
- Transit

FEATURES:

- Tested to LM79, LM80
- L70 is >54,000 hours
- Square version available
- Available in Stainless Steel construction
- Premium Driver with Dimming standard
- Every luminaire tested to assure customer satisfaction
- 5-Year limited warranty

SPECIFICATIONS

HOUSING:

Constructed of 20GA (0.036 inch) zinc coated steel for unmatched corrosion protection. Featuring a double channel, one welded inside the other, with space between the channel sides to capture the diffuser. Threaded hubs are continuously welded into the channel ends providing a sealed wireway access. Removable plugs seal the hubs when not utilized.

Food Zone: All external metal components of stainless steel (S4 Finish Standard).

OPTIONAL PREMIUM MATERIALS:

S4 - All metal components of 304 stainless steel.

FINISH:

Painted surfaces are two mil white polyester enamel, custom colors available.

LENS:

0.125 inch StarFrost® Acrylic with 50% DR content for durability, smooth side out. See ordering information for other high quality acrylic and polycarbonate lens options. A two piece lens with center joiner band is available.

END CAPS:

Die formed of 18GA (0.048 inch) stainless steel. A threaded, knurled ring secures the end cap to the luminaire housing. End caps secure lens.

GASKETING:

EPDM is used in the housing channels and end caps.

ELECTRICAL:

High efficiency LED/Driver combination delivers 160 Lumens/Watt raw array efficacy with 80+ CRI. 4000K color temperature is standard with options for 2700K, 3000K, 3500K, and 5000K. 0-10V dimming comes standard with other control options available. THD <10% @ 120V, <15% @ 277V, PF > 0.95.

MOUNTING:

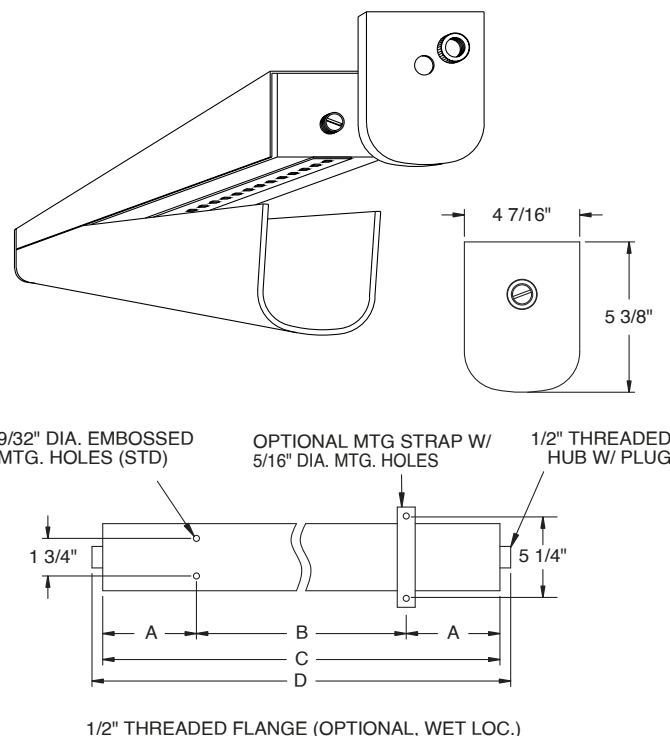
Surface, chain, or pendant options available for covered ceiling installations. Continuous row luminaires manufactured with aligning pins and utilize joiner bands. For further information, contact Sales Representative.

Splash and Food Zone: Surface for covered ceiling installations only.

TEMPERATURE CODE:

Class I, Div. 2 = T4A (120 °C); Class II, Div. 2 = T6 (85 °C)

(No luminaire surface exposed to the hazardous atmosphere will exceed this temperature. Based on 40 °C (104 °F) ambient.)

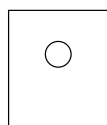
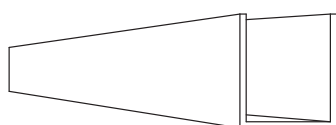


1/2" THREADED FLANGE (OPTIONAL, WET LOC.)

LENGTH (ft)	WEIGHT (lbs)	DIMENSIONS IN INCHES			
		A	B	C	D
1	5	2 3/32	10	14 3/16	15 5/16
2	10	4 19/32	16	25 3/16	26 5/16
3	15	10 1/8	16	36 1/4	37 3/8
4	19	7 5/8	32	47 1/4	48 3/8
5	24	13 1/8	32	58 1/4	59 3/8
6	29	10 5/8	48	69 1/4	70 3/8
7	24	8 5/32	64	80 5/16	81 7/16
8	39	13 21/32	64	91 5/16	92 7/16

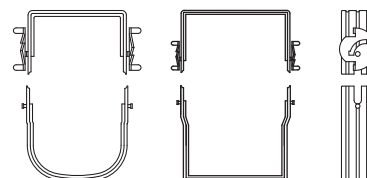
FEATURES | OPTIONS

SQUARE POLYCARBONATE LENS AND END CAP



SQUARE LENS MODELS AVAILABLE
L9W = White Square Polycarbonate
L9P = Prismatic Square Polycarbonate

C3 JOINER BANDS



JL-TD-040424

Due to continuous development and improvements, specifications are subject to change without notice.

C3 Series — Wet & NSF Splash Zone Locations

PRODUCT ORDERING CODE

SERIES	LENGTH	MOUNTING	VOLTAGE	CCT	CRI	LUMENS	FINISH	LENS	DIMMING	OPTIONS
			UNV						LD	
PMC3 Wet Location			UNV 120 - 277 VAC		CRI83 83 CRI				LD Dimming 0-10V	
PMSC3 NSF Splash Zone ¹					CRI90 90 CRI					
	1 1 FT			27K 2700K ⁴			PZ White Painted Zinc Steel			
	2 2 FT			3K 3000K			S4 Stainless Steel ³			
	3 3 FT			35K 3500K						
	4 4 FT			4K 4000K						
	5 5 FT			5K 5000K						
	6 6 FT									
	7 7 FT									
	8 8 FT									
		MS1 Marine Straps Zinc						L3 0.125 White Acrylic (Cell Cast)		
		MS2 Marine Straps Stainless						LH3 0.150 Extra Heavy White Acrylic		
		CM Cable* Mount						L4 0.140 50% DR Ext. Prismatic Acrylic (P20)		
		PM Pendant** Mount						L5 0.125 StarFrost® Acrylic (base)		
		SF Surface Mount ³						L7 0.125 White Polycarbonate		
		Surface Mount with						L8 0.156 Prismatic Polycarbonate (P12)		
		SC Bracket (for chain* mount or standoff)						L9W White Square Polycarbonate		
		*Requires third-party hardware						L9P Prismatic Square Polycarbonate		
		**Requires third-party mounting stem and hardware								
	1 FT					9L 905 lm (10W)				BBU 10W Battery Backup, Integral
	2 FT					18L 1810 lm (20W)				BBU1 12W Battery Backup, Integral
	3 FT					27L 2715 lm (30W)				BBUR2 20W Battery Backup, Remote ⁶
	4 FT					36L 3620 lm (40W)				F1 GLR/HLR Fusing (Fast)
	5 FT					45L 4525 lm (50W)				F2 GMF/HLR Fusing (Slow)
	6 FT					54L 5430 lm (60W)				M3C In-Row Center ⁷
	7 FT					63L 6335 lm (70W)				M3E In-Row End ⁷
	8 FT					72L 7240 lm (80W)				J8 Wire Guard ⁸
						Selection must match the selected length				P11 Guardcraft® Antimicrobial Coating ⁹
										T3 Tamper Resistant (Hex w/pin or other) ³
										T6 Screw-on End Caps (Requires W5)
										T7 Hub Cap (Replaces Ring & Plug)
										W5 Rear Wire Entry ⁵

Footnotes:

¹ NSF Splash Zone luminaires (PMS prefix) may become soiled, but are outside the danger of recontamination

³ Required for 3G rating

⁴ Only 90 CRI

⁵ Consult Factory

⁶ The 20W Battery Backup Remote powers a minimum of 3 luminaires and must be mounted on the outside of the luminaire or in a remote dry/damp location

⁷ Refer to In-Row Construction drawing below to determine necessary center & end units. Every In-Row luminaire must include two ends (M3E), one or more centers (M3C) and joiner bands (drawing details pg. 1)

⁸ Is not available for NSF Splash and Food Zones

⁹ Only Available with White Painted Zinc Steel Finish

JL-TD-040424

Due to continuous development and improvements, specifications are subject to change without notice.

C3 Series — NSF Food Zone Location

PRODUCT ORDERING CODE

SERIES	LENGTH	MOUNTING	VOLTAGE	CCT	CRI	LUMENS	FINISH	LENS	DIMMING	OPTIONS
PMFC3		SF	UNV				S4		LD	
PMFC3 NSF Food Zone ²			UNV 120 - 277 VAC		CRI83 83 CRI CRI90 90 CRI		S4 Stainless Steel ³		LD Dimming 0-10V	
	1 1 FT			27K 2700K ⁴						
	2 2 FT			3K 3000K						
	3 3 FT			35K 3500K						
	4 4 FT			4K 4000K						
	5 5 FT			5K 5000K						
	6 6 FT									
	7 7 FT									
	8 8 FT									
		SF Surface Mount ³								
								L4 0.140 50% DR Extruded Prismatic Acrylic (P20) L5 0.125 StarFrost® Acrylic (base)		
	1 FT					9L 905 lm (10W)				BBU 10W Battery Backup, Integral
	2 FT					18L 1810 lm (20W)				BBU1 12W Battery Backup, Integral
	3 FT					27L 2715 lm (30W)				BBUR2 20W Battery Backup Remote ⁶
	4 FT					36L 3620 lm (40W)				F1 GLR/HLR Fusing (Fast)
	5 FT					45L 4525 lm (50W)				F2 GMF/HLR Fusing (Slow)
	6 FT					54L 5430 lm (60W)				T7 Hub Cap (Replaces Ring & Plug)
	7 FT					63L 6335 lm (70W)				W5 Rear Wire Entry ⁵
	8 FT					72L 7240 lm (80W)				

Selection must match the selected length

Footnotes:

² NSF Food Zone luminaires (PMF prefix) come in DIRECT CONTACT with food

³ Required for 3G rating

⁴ Only 90 CRI

⁵ Consult Factory

⁶ The 20W Battery Backup Remote powers a minimum of 3 luminaires and must be mounted on the outside of the luminaire or in a remote dry/damp location

C3 Series — Hazardous Location

PRODUCT ORDERING CODE

SERIES	LENGTH	MOUNTING	VOLTAGE	CCT	CRI	LUMENS	FINISH	LENS	DIMMING	OPTIONS
PMHC3			UNV						LD	
PMHC3 Hazardous			UNV 120 - 277 VAC		CRI83 83 CRI CRI90 90 CRI				LD Dimming 0-10V	
	1 1 FT 2 2 FT 3 3 FT 4 4 FT 5 5 FT 6 6 FT 7 7 FT 8 8 FT	SF Surface Mount ³ Surface Mount with SC Bracket (for chain* mount or standoff) PM Pendant** Mount *Requires third-party hardware **Requires third-party mounting stem and hardware and S4 Option		27K 2700K ⁴ 3K 3000K 35K 3500K 4K 4000K 5K 5000K			PZ White Painted Zinc Steel S4 Stainless Steel ³	L3 0.125 White Acrylic (Cell Cast) LH3 0.150 Extra Heavy White Acrylic L4 0.140 50% DR Ext. Prismatic Acrylic (P20) L5 0.125 StarFrost® Acrylic (base) L7 0.125 White Polycarbonate L8 0.156 Prismatic Polycarbonate (P12) L9W White Square Polycarbonate L9P Prismatic Square Polycarbonate		
						1 FT 9L 905 lm (10W) 2 FT 18L 1810 lm (20W) 3 FT 27L 2715 lm (30W) 4 FT 36L 3620 lm (40W) 5 FT 45L 4525 lm (50W) 6 FT 54L 5430 lm (60W) 7 FT 63L 6335 lm (70W) 8 FT 72L 7240 lm (80W)		F1 GLR/HLR Fusing (Fast) F2 GMF/HLR Fusing (Slow) M3C In-Row Center ⁷ M3E In-Row End ⁷ J8 Wire Guard ⁸ P11 Guardcraft® Antimicrobial Coating ⁹ T3 Tamper Resistant (Hex w/pin or other) ³ T6 Screw-on End Caps (Requires W5) T7 Hub Cap (Replaces Ring & Plug) W5 Rear Wire Entry*** ⁵		

Footnotes:

³ Required for 3G rating

⁴ Only 90 CRI

⁵ Consult Factory

⁷ Refer to In-Row Construction drawing below to determine necessary center & end units. Every In-Row

Selection must match the selected length

Footnotes:

³ Required for 3G rating

⁴ Only 90 CRI

⁵ Consult Factory

⁷ Refer to In-Row Construction drawing below to determine necessary center & end units. Every In-Row luminaire must include two ends (M3E), one or more centers (M3C) and joiner bands (drawing details pg. 1)

⁸ Is not available for NSF Splash and Food Zones

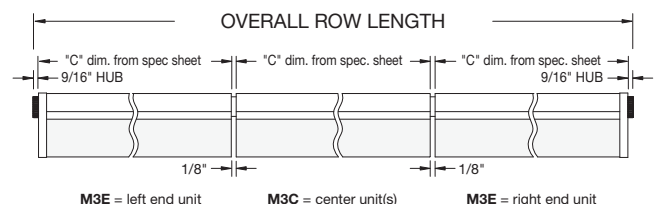
⁹ Only Available with White Painted Zinc Steel Finish

Selection must
match the
selected length

*** Requires S4 Option

(Battery Backup NOT Available
for Hazardous Location)

IN-ROW CONSTRUCTION



LUMEN OUTPUT: All listed lumen values are nominal. Lens transmission and fixture efficiency affect overall lumens.

INDIVIDUAL UNITS STANDARD

NOT ALL COMBINATIONS POSSIBLE

JL-TD-040424

Due to continuous development and improvements, specifications are subject to change without notice.