

F3 Series

Flange Mount Rear Access



Made in USA with domestic & globally sourced components

APPLICATIONS:

- ETL/cETL Listed Wet Location
- Cleanroom
(Classes 100-100,000; ISO Classes 5-9)
- NSF Certified Food Processing
(Splash Zone, Food Zone)
- Industrial & Commercial
- Transit

FEATURES:

- Rear Access
- Available in Stainless Steel construction
- Premium Driver with Dimming standard
- Type IC
- Every luminaire tested to assure customer satisfaction
- 5 year limited warranty

SPECIFICATIONS

HOUSING:

Constructed of nominal 20GA (.036) zinc coated steel for unmatched corrosion protection. Two welded, tapered, threaded flanges on the top provide a sealed wireway access. All seams are sealed with a long life acrylic sealant.

REFLECTOR:

Fabricated of aluminum, painted with a minimum reflectance of 88%.

LENS FRAME:

Exclusively designed, heavy duty, extruded, anodized aluminum with stainless steel captive screws used to hold the lens frame tight to the housing. The frame is hinged for support while servicing.

Food Zone: Lens frame and trim frame of stainless steel (S6 option std).

GASKETING:

An extruded, ribbed vinyl gasket seals the lens into the frame; with our exclusive, mechanically held, extruded, silicone gasket used to seal the frame to the housing.

Food Zone: Silicone sealant is used to seal the lens into the frame, with extruded EPDM sealing the frame to the housing.

FINISH:

Painted surfaces are two mil white polyester enamel, special colors available.

LENS:

.125 StarFrost Acrylic with 50% DR content for durability, smooth side out.

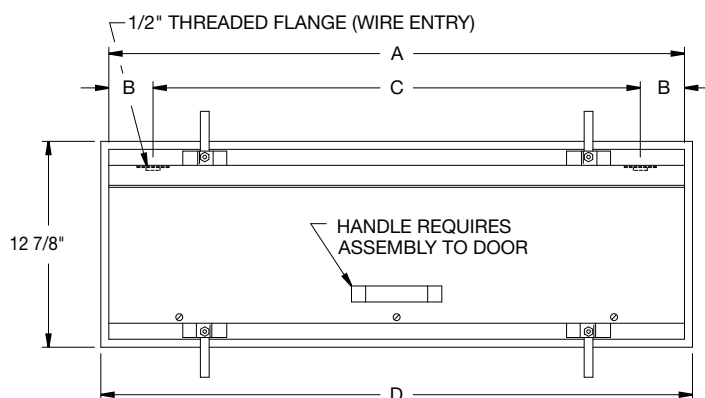
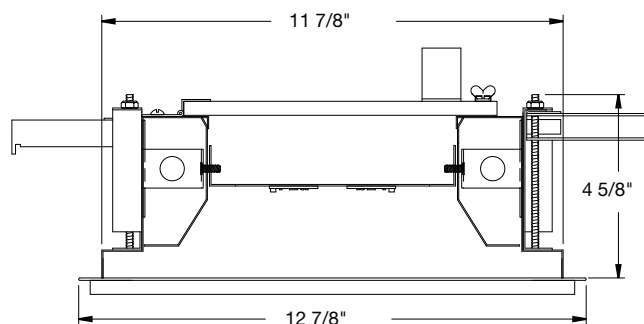
See Ordering Information for other high quality lens options.

ELECTRICAL:

High efficiency LED/Driver combination delivers 160 Lumens/Watt raw array efficacy with 80+ CRI. 4000K color temperature is standard with options for 2700, 3000, 3500 and 5000K. 0-10V dimming comes standard with other control options available. THD <10%@120V, <15%@277V, PF> .95.

MOUNTING:

Flange or custom detail available.



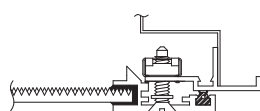
CEILING CUT-OUT DIMENSIONS:

2FT: 12 1/8" x 24 1/4"

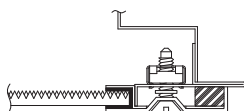
4FT: 12 1/8" x 48 1/4"

LENGTH (ft)	WEIGHT (lbs)	DIMENSIONS IN INCHES			
		A	B	C	D
2	16	23 31/32	2	20	25
4	26	47 15/16	2	44	49 1/16

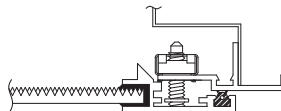
LENS FRAME DETAILS



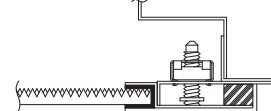
ALUMINUM
LENS FRAME DETAIL



STAINLESS STEEL
LENS FRAME DETAIL



SPLASH ZONE
LENS FRAME DETAIL



FOOD ZONE
LENS FRAME DETAIL

JL-DM-071823



F3 Series

PRODUCT CODE

WET & SPLASH ZONE (NSF) LOCATIONS

SERIES	LENGTH	MOUNTING	VOLTAGE	CCT	CRI	LUMENS	FINISH	LENS	DIMMING	OPTIONS
PMF3 Wet Location PMSF3 Splash Zone (NSF)	2 2 FT. 4 4 FT.	FM Flange	UNV 120-277V	27K 2700K 3K 3000K 35K 3500K 4K 4000K 5K 5000K	CRI83 83 CRI CRI90 90 CRI	2 FT 19L 1850 lm (14W) 37L 3700 lm (28W) 4 FT 67L 3699 lm (28W) 74L 7398 lm (56W)	PZ Painted Zinc Steel S2 Stainless Steel Housing S3 Stainless Steel Exterior S5 Stainless Steel Lens Frame Only S6 SS Lens Frame & Trim Frame CC Custom Color	L3 .125 White Acrylic LH3 .150 Extra Heavy White Acrylic L4 .140 Prismatic Acrylic (P12) L5 .118 StarFrost Acrylic (base) L7 .125 White Polycarbonate L8 .156 Prismatic Polycarbonate (P12) L9 .187 Tempered Glass (P62) LJ4 .020 White Acrylic Overlay (Array Side)	LD Dimming 0-10V	BBU 10W Battery Backup, Integral BBU1 12W Battery Backup, Integral BBUR2⁶ 20W Battery Backup, Remote F1 GLR/HLR Fusing (Fast) F2 GMF/HLR Fusing (Slow) P11² Guardcraft® Antimicrobial Coating T3 Tamper Resistant (Hex w/pin or other) V0 No Silicone Sealant Used V1 External Gasketing

2 = Only Available with Painted Zinc Steel Housing

4 = N/A Splash Zone

6 = The 20W Battery Backup Remote powers a minimum of 3 arrays and must be mounted on the outside of the fixture or in a remote dry/damp location. Maximum mounting height to comply with Egress Path Illumination levels is 17 feet.

PRODUCT CODE

FOOD ZONE (NSF) LOCATION

SERIES	LENGTH	MOUNTING	VOLTAGE	CCT	CRI	LUMENS	FINISH	LENS	DIMMING	OPTIONS
PMFF3 Food Zone (NSF)	2 2 FT. 4 4 FT.	FM Flange	UNV 120-277V	27K 2700K 3K 3000K 35K 3500K 4K 4000K 5K 5000K	CRI83 83 CRI CRI90 90 CRI	2 FT 19L 1850 lm (14W) 37L 3700 lm (28W) 4 FT 67L 3699 lm (28W) 74L 7398 lm (56W)	S3 Stainless Steel Exterior S6 SS Lens Frame & Trim Frame	L4 .140 Prismatic Acrylic (P12) L5 .125 StarFrost Acrylic (base) L9 .187 Tempered Glass (P62)	LD Dimming 0-10V	BBU 10W Battery Backup, Integral BBU1 12W Battery Backup, Integral BBUR2⁶ 20W Battery Backup, Remote F1 GLR/HLR Fusing (Fast) F2 GMF/HLR Fusing (Slow) P11² Guardcraft® Antimicrobial Coating V0 No Silicone Sealant Used V1 External Gasketing

2 = Only Available with Painted Zinc Steel Housing

6 = The 20W Battery Backup Remote powers a minimum of 3 arrays and must be mounted on the outside of the fixture or in a remote dry/damp location. Maximum mounting height to comply with Egress Path Illumination levels is 17 feet.

NSF Food Processing Note: Food Zone (PMF prefix) luminaires come in DIRECT CONTACT with food. Splash Zone (PMS prefix) units may become soiled, but are outside the danger of recontamination.

SS NOTE: If Stainless Steel is ordered, 304 SS Standard, 316 SS and other materials available, consult agent. Additional information regarding applications and proper Stainless Steel selection found in technical section of web site.

LUMEN OUTPUT: All listed lumen values are nominal. Lens transmission and fixture efficiency affect overall lumens.

NOT SUITABLE FOR T-BAR GRID CEILINGS

NOT ALL COMBINATIONS POSSIBLE

JL-DM-071823