

## G2 Series

### Grid Mount



Food  
Processing:



Made in USA with domestic & globally sourced components

#### APPLICATIONS:

- ETL/cETL Listed Wet Location
- Cleanroom  
(Classes 100-100,000; ISO Classes 5-9)
- NSF Certified Food Processing  
(Splash Zone, Food Zone)
- Industrial & Commercial
- Transit

#### FEATURES:

- Available with IP 65 rating,  
add -IP65 suffix (requires stainless steel  
lens frame)
- Available in Stainless Steel construction
- Premium Driver with Dimming standard
- Type IC
- Every luminaire tested to assure  
customer satisfaction
- 5 year limited warranty

### SPECIFICATIONS

#### HOUSING:

Constructed of nominal 20GA (.036) zinc coated steel for unmatched corrosion protection. Two welded, tapered, threaded flanges on the top provide a sealed wireway access. All seams are sealed with a long life acrylic sealant.

#### REFLECTOR:

Fabricated of aluminum, painted with a minimum reflectance of 88%.

#### LENS FRAME:

Exclusively designed, heavy duty, extruded, anodized aluminum with stainless steel captive screws used to hold the lens frame tight to the housing. The frame is hinged for support while servicing.

**Food Zone:** All external metal components of stainless steel (S3 option std).

#### GASKETING:

An extruded, ribbed vinyl gasket seals the lens into the frame; with our exclusive, mechanically held, extruded, silicone gasket used to seal the frame to the housing.

**Food Zone:** Silicone sealant is used to seal the lens into the frame, with extruded EPDM sealing the frame to the housing.

#### FINISH:

Painted surfaces are two mil white polyester enamel, special colors available.

#### LENS:

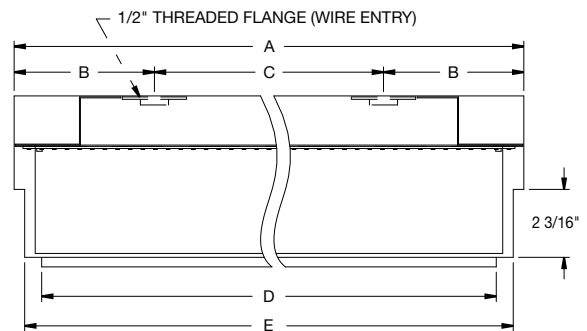
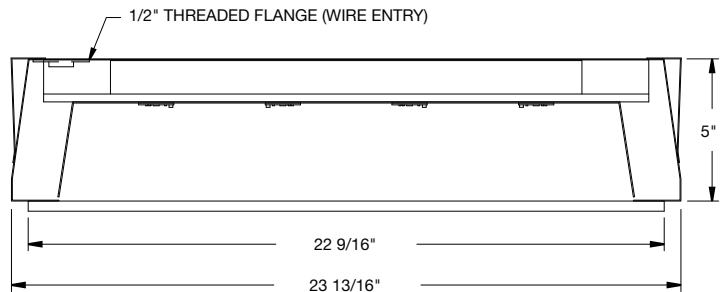
.125 StarFrost Acrylic with 50% DR content for durability, smooth side out.  
See Ordering Information for other high quality lens options.

#### ELECTRICAL:

High efficiency LED/Driver combination delivers 160 Lumens/Watt raw array efficacy with 80+ CRI. 4000K color temperature is standard with options for 2700, 3000, 3500 and 5000K. 0-10V dimming comes standard with other control options available. THD <10%@120V, <15%@277V, PF> .95.

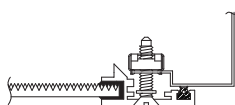
#### MOUNTING:

Grid or custom detail available.

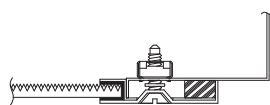


LENGTH (ft)	WEIGHT (lbs)	DIMENSIONS IN INCHES				
		A	B	C	D	E
2	22	23 29/32	5 11/32	13 1/4	22 9/16	23 21/32
4	38	47 29/32	4 31/32	38	46 1/2	47 21/32

### LENS FRAME DETAILS



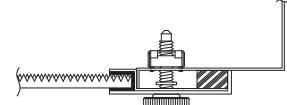
ALUMINUM  
LENS FRAME DETAIL



STAINLESS STEEL  
LENS FRAME DETAIL



SPLASH ZONE  
LENS FRAME DETAIL



FOOD ZONE  
LENS FRAME DETAIL

JL-DM-071823



## G2 Series

### PRODUCT CODE

### WET & SPLASH ZONE (NSF) LOCATIONS

SERIES	LENGTH	MOUNTING	VOLTAGE	CCT	CRI	LUMENS	FINISH	LENS	DIMMING	OPTIONS
			UNV						LD	
PMG2 Wet Location PMSG2 Splash Zone (NSF)			UNV 120-277V		CRI83 83 CRI CRI90 90 CRI		PZ Painted Zinc Steel Housing, Aluminum Lens Frame		LD Dimming 0-10V	
	2 2 FT. 4 4 FT.	G0 1" (15/16") Standard G1 1 1/2" T-Bar G2 2" T-Bar G4 1 & 1 1/2" T-Bar with Flush Lens G5 2" T-Bar with Flush Lens GS7 Grid Special (Specify)		27K 2700K 3K 3000K 35K 3500K 4K 4000K 5K 5000K		2 FT 17L 1720 lm (14W) 35L 3521 lm (28W) 53L 5282 lm (42W) 70L 7042 lm (56W) 4 FT 38L 3779 lm (28W) 76L 7558 lm (56W) 113L 11337 lm (84W) 151L 15116 lm (112W)	S2 Stainless Steel Housing, Aluminum Lens Frame S3 Stainless Steel Complete S5 Stainless Steel Lens Frame, Painted Zinc Steel Housing CC Custom Color		BBU 10W Battery Backup, Integral BBU1 12W Battery Backup, Integral BBUR26 20W Battery Backup, Remote F1 GLR/HLR Fusing (Fast) F2 GMF/HLR Fusing (Slow) IP65 IP Rated (Requires S5 Option) P112 Guardcraft® Antimicrobial Coating T3 Tamper Resistant (Hex w/pin or other) V0 No Silicone Sealant Used V1 External Gasketing	
2 = Only Available with Painted Zinc Steel Housing 4 = N/A Splash Zone 6 = The 20W Battery Backup Remote powers a minimum of 3 arrays and must be mounted on the outside of the fixture or in a remote dry/damp location. Maximum mounting height to comply with Egress Path Illumination levels is 17 feet. 7. Consult factory, must supply Grid Manufacturer and system model number information.										
							L3 .125 White Acrylic LH3 .150 Extra Heavy White Acrylic L4 .140 Prismatic Acrylic (P12) L5 .125 StarFrost Acrylic (base) L7 .125 White Polycarbonate L8 .156 Prismatic Polycarbonate (P12) L9 .187 Tempered Glass (P62) LJ4 .020 White Acrylic Overlay (Array Side)			

2 = Only Available with Painted Zinc Steel Housing

4 = N/A Splash Zone

6 = The 20W Battery Backup Remote powers a minimum of 3 arrays and must be mounted on the outside of the fixture or in a remote dry/damp location. Maximum mounting height to comply with Egress Path Illumination levels is 17 feet.

7. Consult factory, must supply Grid Manufacturer and system model number information.

### PRODUCT CODE

### FOOD ZONE (NSF) LOCATION

SERIES	LENGTH	MOUNTING	VOLTAGE	CCT	CRI	LUMENS	FINISH	LENS	DIMMING	OPTIONS
<b>PMFG2</b> Food Zone (NSF)	2 2 FT. 4 4 FT.	<b>G0</b> 1" (15/16") Standard <b>G1</b> 1 1/2" T-Bar <b>G2</b> 2" T-Bar <b>G4</b> 1 & 1 1/2" T-Bar with Flush Lens <b>G5</b> 2" T-Bar with Flush Lens <b>GS7</b> Grid Special (Specify)	<b>UNV</b> 120-277V	<b>27K</b> 2700K <b>3K</b> 3000K <b>35K</b> 3500K <b>4K</b> 4000K <b>5K</b> 5000K	<b>CRI83</b> 83 CRI <b>CRI90</b> 90 CRI	<b>2 FT</b> <b>17L</b> 1720 lm (14W) <b>35L</b> 3521 lm (28W) <b>53L</b> 5282 lm (42W) <b>70L</b> 7042 lm (56W) <b>4 FT</b> <b>38L</b> 3779 lm (28W) <b>76L</b> 7558 lm (56W) <b>113L</b> 11337 lm (84W) <b>151L</b> 15116 lm (112W)	<b>S3</b> Stainless Steel Complete		<b>LD</b> Dimming 0-10V	<b>BBU</b> 10W Battery Backup, Integral <b>BBU1</b> 12W Battery Backup, Integral <b>BBUR26</b> 20W Battery Backup, Remote <b>F1</b> GLR/HLR Fusing (Fast) <b>F2</b> GMF/HLR Fusing (Slow) <b>IP65</b> IP Rated (Requires S5 Option) <b>T3</b> Tamper Resistant (Hex w/pin or other) <b>V0</b> No Silicone Sealant Used <b>V1</b> External Gasketing
							<b>L4</b> .140 Prismatic Acrylic (P12) <b>L5</b> .125 StarFrost Acrylic (base) <b>L9</b> .187 Tempered Glass (P62)			

6 = The 20W Battery Backup Remote powers a minimum of 3 arrays and must be mounted on the outside of the fixture or in a remote dry/damp location. Maximum mounting height to comply with Egress Path Illumination levels is 17 feet.

7. Consult factory, must supply Grid Manufacturer and system model number information.