

## K7 Series

### Surface Mount



Made in USA with domestic & globally sourced components

#### APPLICATIONS:

- ETL/cETL Listed Damp Location
- Cleanroom  
(Classes 100-100,000; ISO Classes 5-9)
- Industrial & Commercial
- Transit

#### FEATURES:

- Premium Driver with Dimming standard
- Available in stainless steel construction
- Every luminaire tested to assure customer satisfaction
- 5 year limited warranty

### SPECIFICATIONS

#### HOUSING:

Constructed of nominal 20GA (.036) zinc coated steel for unmatched corrosion protection. 1/2" threaded flange on back of luminaire provides wireway access. All seams are sealed with a long life acrylic sealant.

#### REFLECTOR:

Fabricated of zinc coated steel, painted with a minimum reflectance of 88%.

#### LENS FRAME:

Exclusively designed, heavy duty, extruded, anodized aluminum with captive screws used to hold the lens frame tight to the housing. The frame is supported by two cables while servicing.

#### GASKETING:

An extruded, ribbed vinyl gasket seals the lens into the frame; with our exclusive, mechanically held, extruded, silicone gasket used to seal the frame to the housing.

#### FINISH:

Painted surfaces are two mil white polyester enamel, special colors available.

#### LENS:

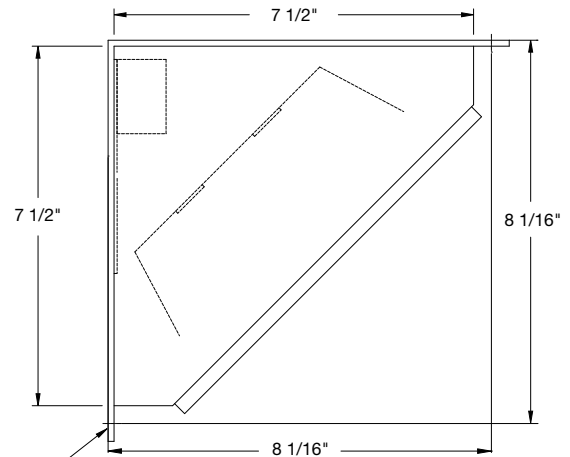
0.125" extruded StarFrost Acrylic standard, see ordering information for other high quality lens options.

#### ELECTRICAL:

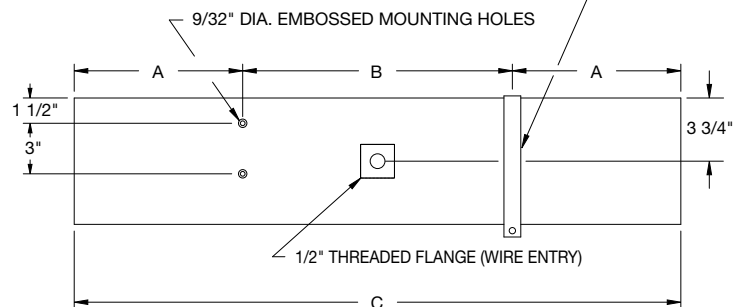
High efficiency LED/Driver combination delivers 160 Lumens/Watt raw array efficacy with 80+ CRI. 4000K color temperature is standard with options for 2700, 3000, 3500 and 5000K. 0-10V dimming comes standard with other control options available. THD <10%@120V, <15%@277V, PF> .95.

#### MOUNTING:

Surface or custom detail available for covered ceiling installations.

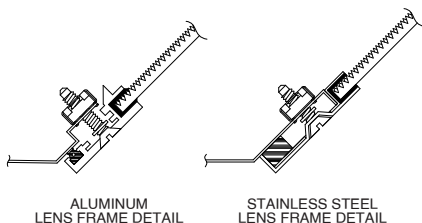


OPTIONAL MOUNTING STRAP W/ 5/16" DIA. MTG. HOLES



LENGTH	DIMENSIONS IN INCHES		
	A	B	C
2 FT	4 5/16	16	24 5/8
4 FT	8 5/16	32	47 1/4
6 FT	12 5/16	48	72 5/8
8 FT	16 5/16	64	91

### FEATURES | OPTIONS



#### TAMPER RESISTANT SCREW HEADS OPTION SUFFIX- T3



JL-DM-071823

# K7 Series

## PRODUCT CODE

## DAMP LOCATION

SERIES	LENGTH	MOUNTING	VOLTAGE	CCT	CRI	LUMENS	FINISH	LENS	DIMMING	OPTIONS
<b>PMK7</b>			<b>UNV</b>						<b>LD</b>	
<b>PMK7</b> Damp Location		<b>SF</b> Surface <b>MS</b> Marine Straps <b>PM</b> Pendant (by other)	<b>UNV</b> 120-277V	<b>27K</b> 2700K <b>3K</b> 3000K <b>35K</b> 3500K <b>4K</b> 4000K <b>5K</b> 5000K	<b>CRI83</b> 83 CRI <b>CRI90</b> 90 CRI	<b>2 FT</b> <b>13L</b> 1331 lm (14W) <b>27L</b> 2662 lm (28W) <b>4 FT</b> <b>27L</b> 2662 lm (28W) <b>53L</b> 5324 lm (56W) <b>6 FT</b> <b>40L</b> 3992 lm (42W) <b>80L</b> 7986 lm (84W) <b>8 FT</b> <b>53L</b> 5324 lm (56W) <b>106L</b> 10648 lm (112W)	<b>PZ</b> Painted Zinc Steel Housing, Aluminum Lens Frame <b>S2</b> Stainless Steel Housing, Aluminum Lens Frame <b>S3</b> Stainless Steel Complete <b>S5</b> Stainless Steel Lens Frame, Painted Zinc Steel Housing <b>CC</b> Custom Color	<b>L3</b> .125 White Acrylic <b>LH3</b> .150 Extra Heavy White Acrylic <b>L4</b> .140 Prismatic Acrylic (P12) <b>L5</b> .125 StarFrost Acrylic (base) <b>L7</b> .125 White Polycarbonate <b>L8</b> .156 Prismatic Polycarbonate (P12) <b>L9</b> .187 Tempered Glass (P62)	<b>LD</b> Dimming 0-10V	<b>BBU</b> 10W Battery Backup, Integral <b>BBU1</b> 12W Battery Backup, Integral <b>BBUR2</b> 20W Battery Backup, Remote <b>F1</b> GLR/HLR Fusing (Fast) <b>F2</b> GMF/HLR Fusing (Slow) <b>P11</b> <sup>2</sup> Guardcraft® Antimicrobial Coating <b>T3</b> <sup>4</sup> Tamper Resistant (Hex w/pin or other) <b>V0</b> No Silicone Sealant Used (\$5 Req)

2 = Only Available with Painted Zinc Steel Housing

3 = Consult Factory

6 = The 20W Battery Backup Remote powers a minimum of 3 arrays and must be mounted on the outside of the fixture or in a remote dry/damp location. Maximum mounting height to comply with Egress Path Illumination levels is 17 feet.

**SS NOTE:** If Stainless Steel is ordered, 304 SS Standard, 316 SS and other materials available, consult agent. Additional information regarding applications and proper Stainless Steel selection found in technical section of web site.

INDIVIDUAL UNITS STANDARD  
NOT ALL COMBINATIONS POSSIBLE

JL-DM-071823

Due to continuous development and improvements, specifications are subject to change without notice. Paramount reserves the right to change lab test details or specifications without notice. Product use certifies agreement to Paramount terms and conditions.

 US Lighting Manufacturer Since 1947

© Paramount Industries / A Brand of Bukas Lighting Group • 3625 Swenson Ave • St. Charles, IL 60174 • 800-521-5405 • www.paramountlighting.com