

## Q6 Series *(Previously known as C1)*

### Surface Mount



Food  
Processing:



Made in USA with domestic & globally sourced components

#### APPLICATIONS:

- ETL/cETL Listed Wet Location
- NSF Certified Food Processing (Splash Zone)
- Industrial & Commercial

#### FEATURES:

- NEMA 4X Hose Down
- Durable Impact Modified Extruded Acrylic Enclosure
- Premium Driver with Dimming standard
- Every luminaire tested to assure customer satisfaction
- 5 year limited warranty
- Non-Dust Collecting Shape that is easily cleanable

### SPECIFICATIONS

#### ENCLOSURE:

Nominal .125 thick wall, 6" diameter, impact modified extruded clear acrylic.

#### END CAPS:

Spun from nominal 18GA (.048) 304 grade stainless steel.

#### GASKETING:

Silicone end cap gasket standard for all models.

#### INTERIOR LUMINAIRE:

Metal components are of nominal .040 painted aluminum and 18GA (.048) 304 grade stainless steel

#### ELECTRICAL:

High efficiency LED/Driver combination with 80+ CRI. 4000K color temperature is standard with options for 2700, 3000, 3500 and 5000K. 0-10V dimming and other control options available. THD <10%@120V, <15%@277V, PF> .95. Fixture comes standard with a 3 wire watertight mini receptacle. See page 2 for available cord options.

#### OPTICS:

Rotatable fixture allows for setting precise optic direction. For use in direct, indirect or direct/indirect application with multiple optics packages available. LED's are masked by a high transmission polycarbonate overlay. Uplight in 2U and 3U versions are not masked.

#### MOUNTING:

Standard chain mounting with optional mounting shown at bottom of page. All exterior hardware constructed of 304 grade stainless steel. Horizontal mounting only.

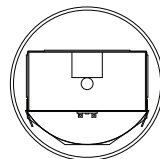
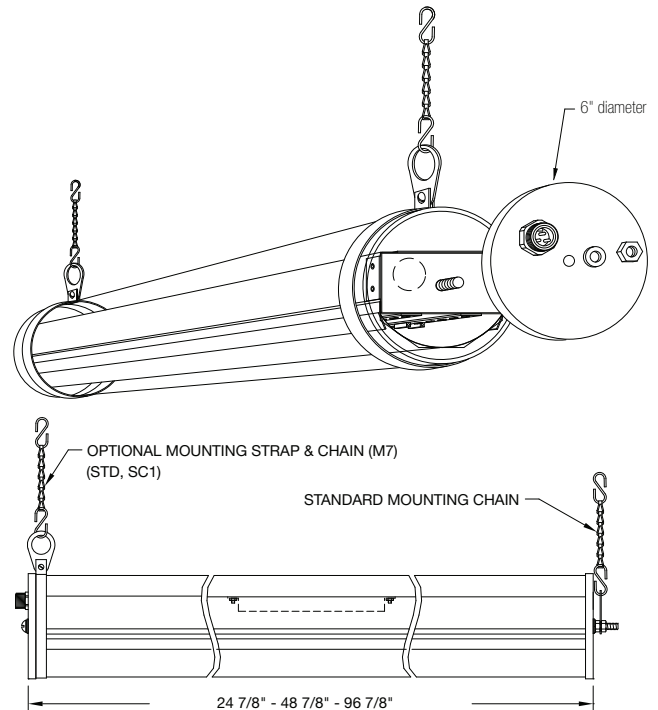
#### INSTALLATION:

Hassle free installation. Fixture comes pre-wired, ready to power up, no disassembly required. Simply mount chain or bracket, attach fixture, plug in and start realizing energy savings.

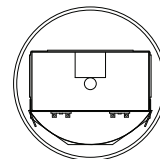
#### TEMPERATURE:

Temperature Range: -20°C to 35°C (-4°F to 95°F)

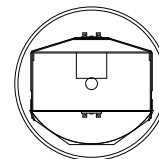
LENGTH (ft)	WEIGHT (lbs)
2	10
4	16
8	20



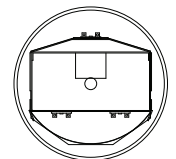
One Row Down



Two Rows Down

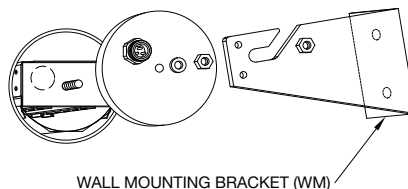
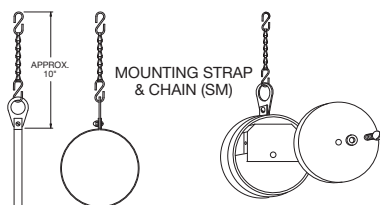


One Row Down, One Row Up

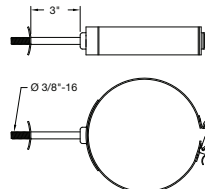


Two Rows Down, One Row Up

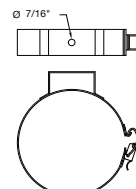
### FEATURES | OPTIONS



WALL MOUNTING BRACKET (WM)



WALL MOUNTING BRACKET (QWM)



CABLE MOUNTING BRACKET (OCM)

JL-DM-060923



## Q6 Series *(Previously known as C1)*

### PRODUCT CODE

### WET LOCATION

SERIES	LENGTH	MOUNTING	VOLTAGE	CCT	CRI	LUMENS	LUMENS	LENS	DIMMING	CORD	OPTIONS
PMQ6			UNV								
PMQ6 <sup>8</sup> Wet Location			UNV 120-277V		CRI83 83 CRI CRI90 90 CRI	DOWN	UP		LD <sup>4</sup> Dimming 0-10V ND Non Dimming		
	2 2 FT 4 4 FT 8 8 FT	CN Chain (Std.) SM Strap Bracket WM Wall Bracket QWM Quick Release Wall Bracket QCM Quick Release Cable Bracket		27K 2700K 3K 3000K 35K 3500K 4K 4000K 5K 5000K		16L 1567 lm (1) (14W) 31L 3134 lm (2) (28W) 16L 1567 lm (1) (14W) 36L 3556 lm (2) (42W) 4 FT 31L 3134 lm (1) (28W) 63L 6268 lm (2) (56W) 31L 3134 lm (1) (28W) 71L 7113 lm (2) (56W) 8 FT 63L 6268 lm (1) (56W) 125L 12532 lm (2) (112W) 63L 6268 lm (1) (56W) 142L 14225 lm (2) (112W)	UNO UNO 16L 1567 lm (1) (14W) 21L 2089 lm (1) (14W) 4 FT UNO UNO 31L 3134 lm (1) (28W) 42L 4177 lm (1) (28W) 8 FT UNO UNO 63L 6268 lm (1) (56W) 84L 8354 lm (1) (56W)	W1 6' 120V Cord with Plug (non dim) W6 6' Cord with Mini-Change Connector (non dim) WD6 Dimmable 6' Cord with Mini-Change Connector W12 12' Cord with Mini-Change Connector (non dim) WD12 Dimmable 12' Cord with Mini-Change Connector W20 20' Cord with Mini-Change Connector (non dim) WD20 Dimmable 20' Cord with Mini-Change Connector	F1 GLR/HLR Fusing (Fast) F2 GMF/HLR Fusing (Slow)		
								L2 .125 Clear Acrylic Tube L6 .125 Clear Polycarbonate Tube			

4 = REQUIRES special five wire Dimming Cord  
8 = EPDM End Cap Gasket Standard

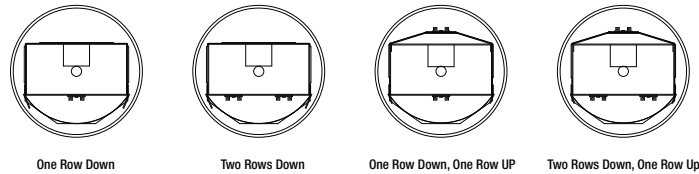
One Row Down

Two Rows Down

One Row Down, One Row UP

Two Rows Down, One Row UP

4 = REQUIRES special five wire Dimming Cord  
8 = EPDM End Cap Gasket Standard



### PRODUCT CODE

### SPLASH ZONE (NSF) LOCATION

SERIES	LENGTH	MOUNTING	VOLTAGE	CCT	CRI	LUMENS	LUMENS	LENS	DIMMING	CORD	OPTIONS
PMSQ6			UNV								
PMSQ6 <sup>9</sup> Splash Zone (NSF)			UNV 120-277V		CRI83 83 CRI CRI90 90 CRI	DOWN	UP		LD <sup>4</sup> Dimming 0-10V ND Non Dimming		
	2 2 FT 4 4 FT 8 8 FT	SM Strap Bracket (Std.) QWM Quick Release Wall Bracket QCM Quick Release Cable Bracket		27K 2700K 3K 3000K 35K 3500K 4K 4000K 5K 5000K		2 FT 16L 1567 lm (1) (14W) 31L 3134 lm (2) (28W) 16L 1567 lm (1) (14W) 36L 3556 lm (2) (42W) 4 FT 31L 3134 lm (1) (28W) 63L 6268 lm (2) (56W) 31L 3134 lm (1) (28W) 71L 7113 lm (2) (56W) 8 FT 63L 6268 lm (1) (56W) 125L 12532 lm (2) (112W) 63L 6268 lm (1) (56W) 142L 14225 lm (2) (112W)	2 FT UNO UNO 16L 1567 lm (1) (14W) 21L 2089 lm (1) (14W) 4 FT UNO UNO 31L 3134 lm (1) (28W) 42L 4177 lm (1) (28W) 8 FT UNO UNO 63L 6268 lm (1) (56W) 84L 8354 lm (1) (56W)		W1 6' 120V Cord with Plug (non dim) W6 6' Cord with Mini-Change Connector (non dim) WD6 Dimmable 6' Cord with Mini-Change Connector W12 12' Cord with Mini-Change Connector (non dim) WD12 Dimmable 12' Cord with Mini-Change Connector W20 20' Cord with Mini-Change Connector (non dim) WD20 Dimmable 20' Cord with Mini-Change Connector		
4 = REQUIRES special five wire Dimming Cord 9 = Neoprene End Cap Gasket Standard for Splash Zone											
								L2 .125 Clear Acrylic Tube L6 .125 Clear Polycarbonate Tube			

4 = REQUIRES special five wire Dimming Cord  
9 = Neoprene End Cap Gasket Standard for Splash Zone

**NSF Food Processing Note:** Splash Zone (PMS prefix) units may become soiled, but are outside the danger of recontamination.

**LUMEN OUTPUT:** All listed lumen values are nominal. Lens transmission and fixture efficiency affect overall lumens.

**INDIVIDUAL UNITS STANDARD**

**NOT ALL COMBINATIONS POSSIBLE**

JL-DM-060923

Due to continuous development and improvements, specifications are subject to change without notice. Paramount reserves the right to change lab test details or specifications without notice. Product use certifies agreement to Paramount terms and conditions.