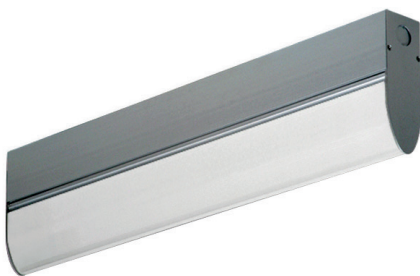


A1 Series

AeroLux®

Surface Mount



APPLICATIONS:

- Cleanroom (Classes 10-100,000; ISO Classes 4-9)
- Industrial & Commercial

FEATURES:

- ETL/cETL Listed Dry Location
- Luminaires adaptable to your specific needs
- Premium Driver with Dimming standard
- UV Filtering Lens up to 370 nanometers
- Every luminaire tested to assure customer satisfaction
- 5-Year limited warranty

SPECIFICATIONS

HOUSING:

Constructed of heavy duty extruded, anodized aluminum. Wireway access can be provided in the top (W5 option).

LENS:

Extruded from a proprietary impact modified acrylic blend, specially formulated to minimize hot spots and provide maximum light transmission. This lens features a smooth exterior and utilizes light controlling longitudinal prisms that direct light output into the room, provides UV filtering, and reduces glare. This high performing lens is the ideal solution for modern LED technology.

END CAPS:

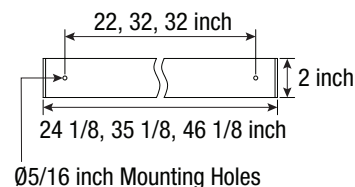
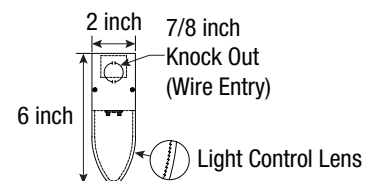
Laser cut steel with powder coat finish. Knock outs are provided in each end cap as standard for wireway access, or top of housing (W5 option).

ELECTRICAL:

High efficiency LED/Driver combination delivers 160 Lumens/Watt raw array efficacy with 80+ CRI. 4000K color temperature is standard with options for 2700K, 3000K, 3500K, and 5000K. 0-10V dimming comes standard with other control options available. THD <10% @ 120V, <15% @ 277V, PF> 0.95.

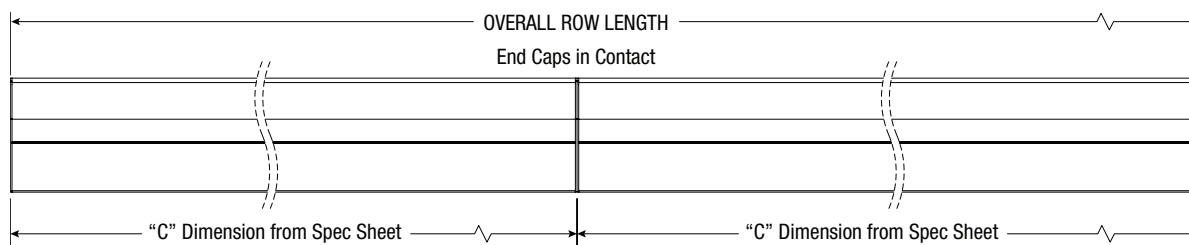
MOUNTING:

Designed for HEPA filter grid ceiling; surface, surface in-row, cable, or pendant options available.



LENGTH (ft)	WEIGHT (lbs)
2	8
3	10
4	11

FEATURES | OPTIONS



AB-TD-111425

Due to continuous development and improvements, specifications are subject to change without notice.

A1 Series — Dry Location

PRODUCT ORDERING CODE

SERIES	LENGTH	MOUNTING	VOLTAGE	CCT	CRI	LUMENS	FINISH	LENS	DIMMING	OPTIONS
PMA1			UNV				AA	LA	LD	
PMA1 Dry Location			UNV 120 - 277 VAC		CRI83 83 CRI CRI90 90 CRI		AA Anodized Aluminum		LD Dimming 0-10V	
	2 2 FT 3 3 FT 4 4 FT			27K 2700K ¹ 3K 3000K 35K 3500K 4K 4000K 5K 5000K						
		SF Surface Mount CM Cable* Mount PM Pendant** Mount						LA Light Control Acrylic		
		*Requires third-party hardware **Requires third-party mounting stem and hardware								
						2 FT 13L 1338 lm (10W) 3 FT 23L 2360 lm (17W) 4 FT 33L 3344 lm (24W)				BBUS 10W Battery Backup, Integral (Self-Testing) ² F1 GLR/HLR Fusing (Fast) F2 GMF/HLR Fusing (Slow) M3 In-Row (Surface Mount) ³ W5 Rear Wire Entry ⁴
						Selection must match the selected length	Lumen Output 4K, CRI83			

Footnotes:

- ¹ Only 90 CRI
² Only available on 3 & 4 FT lengths; not compatible with W5 (RWE)
³ Refer to In-Row Construction drawing (details pg. 1)
⁴ Consult Factory