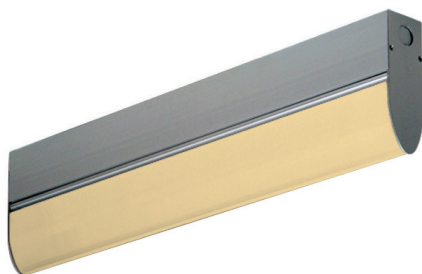


# A1A Series — Narrow Spectrum Amber

**AeroLux®**

## Surface Mount



### APPLICATIONS:

- Cleanroom (Classes 10-100,000; ISO Classes 4-9)
- Industrial & Commercial
- Pharmaceutical
- Biology
- Electronics
- Aerospace
- Medical

### FEATURES:

- ETL/cETL Listed Dry Location
- Narrow spectrum 572 nm Amber LED
- L70 ≥ 100,000 hours
- Luminaires adaptable to your specific needs
- Premium Driver with Dimming standard
- UV Filtering Lens up to 370 nanometers
- Every luminaire tested to assure customer satisfaction
- 5-Year limited warranty

## SPECIFICATIONS

### HOUSING:

Constructed of heavy duty extruded, anodized aluminum. Wireway access can be provided in the top (W5 option).

### LENS:

Extruded from a proprietary impact modified acrylic blend, specially formulated to minimize hot spots and provide maximum light transmission. This lens features a smooth exterior and utilizes light controlling longitudinal prisms that direct light output into the room with reduced glare. This high performing lens is the ideal solution for modern LED technology.

### END CAPS:

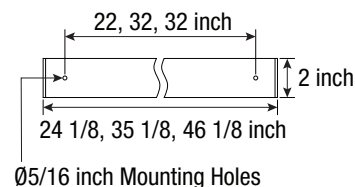
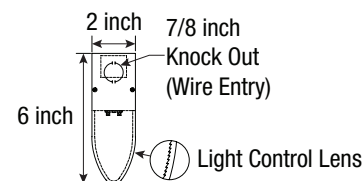
Laser cut steel with powder coat finish. Knock outs are provided in each end cap as standard for wireway access, or top of housing (W5 option).

### ELECTRICAL:

High efficiency LED/Driver combination delivers amber light output suitable for lithography and other applications. 0-10V dimming comes standard with other control options available. THD <10% @ 120V, <15% @ 277V, PF> 0.95.

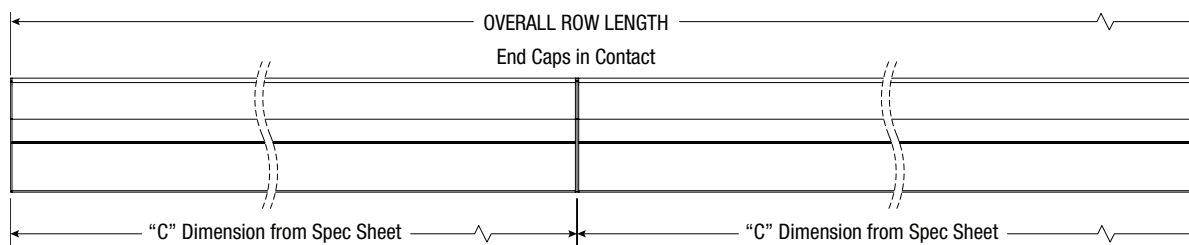
### MOUNTING:

Designed for HEPA filter grid ceiling; surface, surface in-row, cable, or pendant options available.



LENGTH (ft)	WEIGHT (lbs)
2	8
3	10
4	11

## FEATURES | OPTIONS



JC-TD-101725

Due to continuous development and improvements, specifications are subject to change without notice.

# A1A Series — Dry Location

## PRODUCT ORDERING CODE

SERIES	LENGTH	MOUNTING	VOLTAGE	CCT	LUMENS	FINISH	LENS	DIMMING	OPTIONS
<b>PMA1A</b>			<b>UNV</b>	<b>AMB</b>		<b>AA</b>	<b>LA</b>	<b>LD</b>	
<b>PMA1A</b> Dry Location			<b>UNV</b> 120 - 277 VAC	<b>AMB</b> Amber		<b>AA</b> Anodized Aluminum		<b>LD</b> Dimming 0-10V	
	<b>2</b> 2 FT <b>4</b> 4 FT								
		<b>SF</b> Surface Mount <b>CM</b> Cable* Mount <b>PM</b> Pendant** Mount					<b>LA</b> Light Control Acrylic		
		*Requires third-party hardware **Requires third-party mounting stem and hardware							
					<b>2 FT</b> <b>13L</b> 1338 lm (10W) <b>4 FT</b> <b>33L</b> 3344 lm (24W)				<b>BBUS</b> 10W Battery Backup, Integral (Self-Testing) <sup>2</sup> <b>F1</b> GLR/HLR Fusing (Fast) <b>F2</b> GMF/HLR Fusing (Slow) <b>M3</b> In-Row (Surface Mount) <sup>3</sup> <b>W5</b> Rear Wire Entry <sup>4</sup>
					Selection must match the selected length Lumen Output 4K, CRI83				

Footnotes:

<sup>2</sup> Only available on 3 & 4 FT lengths; not compatible with W5 (RWE)

<sup>3</sup> Refer to In-Row Construction drawing (details pg. 1)

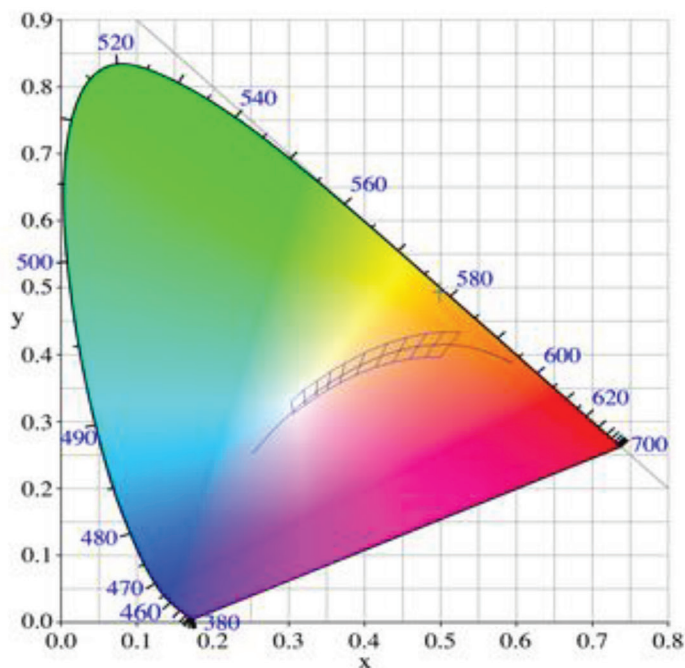
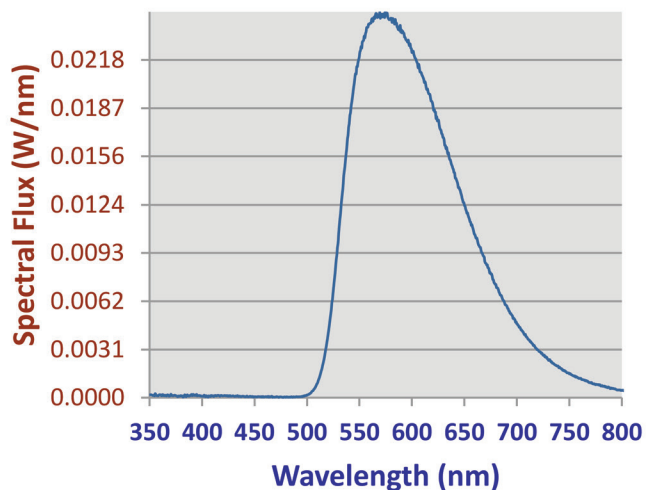
<sup>4</sup> Consult Factory

CONTACT FACTORY FOR DIFFERENT WAVELENGTHS.

## A1A Series

### PHOTOMETRICS

### Relative Spectral Power Distribution



NARROW SPECTRUM AMBER	
Peak Wavelength	Dominant Wavelength
572.1	578