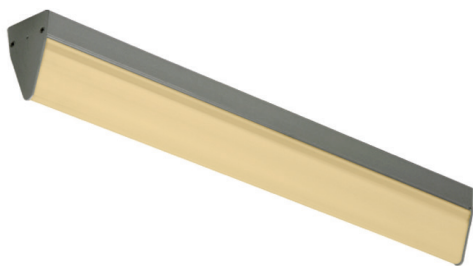


# A9A Series — Narrow Spectrum Amber

**MiniLux®**

## Surface Mount



### APPLICATIONS:

- Cleanroom (Classes 10-100,000; ISO Classes 4-9)
- Industrial & Commercial
- Pharmaceutical
- Biology
- Electronics
- Aerospace
- Medical

### FEATURES:

- ETL/cETL Listed Dry Location
- Narrow spectrum 572 nm Amber LED
- L70 ≥ 100,000 hours
- Luminaires adaptable to your specific needs
- Premium Driver with Dimming standard
- Every luminaire tested to assure customer satisfaction
- 5-Year limited warranty

## SPECIFICATIONS

### HOUSING:

Constructed of heavy duty extruded, anodized aluminum. Wireway access can be provided in the top (W5 option).

### LENS:

Extruded from a proprietary impact modified acrylic blend, specially formulated to minimize hot spots and provide maximum light transmission. This lens features a smooth exterior and utilizes light controlling longitudinal prisms that direct light output into the room with reduced glare. This high performing lens is the ideal solution for modern LED technology.

### END CAPS:

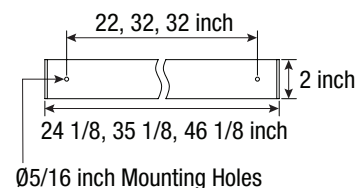
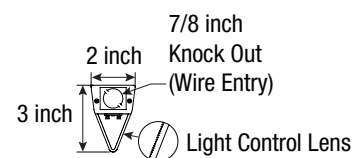
Laser cut aluminum with powder coat finish. Knock outs are provided in each end cap as standard for wireway access, or top of housing (W5 option).

### ELECTRICAL:

High efficiency LED/Driver combination delivers amber light output suitable for lithography and other applications. 0-10V dimming comes standard with other control options available. THD <10% @ 120V, <15% @ 277V, PF> 0.95.

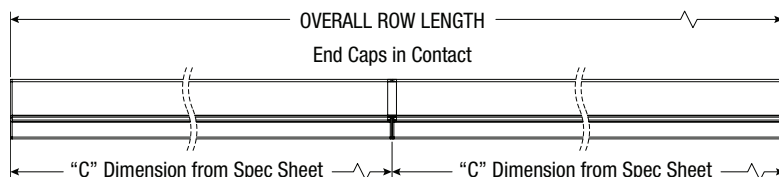
### MOUNTING:

Designed for HEPA filter grid ceiling; surface, surface in-row, cable, or pendant options available.



LENGTH (ft)	WEIGHT (lbs)
2	3
3	4
4	5

## FEATURES | OPTIONS



JC-TD-111825

Due to continuous development and improvements, specifications are subject to change without notice.

## A9A Series — Dry Location

### PRODUCT ORDERING CODE

SERIES	LENGTH	MOUNTING	VOLTAGE	CCT	LUMENS	FINISH	LENS	DIMMING	OPTIONS
PMA9A			UNV	AMB		AA	LA	LD	
PMA9A Dry Location			UNV 120 - 277 VAC	AMB Amber		AA Anodized Aluminum		LD Dimming 0-10V	
	2 2 FT 4 4 FT								
		SF Surface Mount CM Cable* Mount PM Pendant** Mount					LA Light Control Acrylic		
		*Requires third-party hardware **Requires third-party mounting stem and hardware							
					2 FT 17L 1737 lm (26W) 4 FT 35L 3476 lm (51W)				BBUS 10W Battery Backup, Integral (Self-Testing) <sup>2</sup> F1 GLR/HLR Fusing (Fast) F2 GMF/HLR Fusing (Slow) M3 In-Row (Surface Mount) <sup>3</sup> W5 Rear Wire Entry <sup>4</sup>
					Selection must match the selected length Lumen Output 4K, CRI83				

Footnotes:

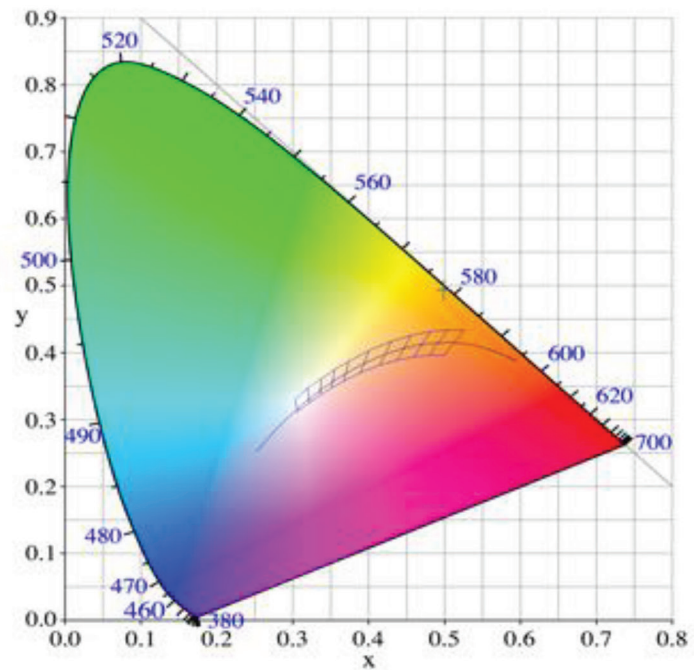
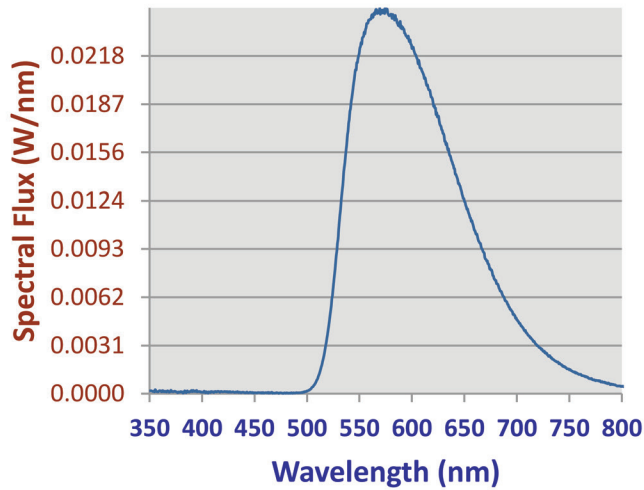
- <sup>1</sup> Only 90 CRI  
<sup>2</sup> Only available on 3 & 4 FT lengths; not compatible with W5 (RWE)  
<sup>3</sup> Refer to In-Row Construction drawing (details pg. 1)  
<sup>4</sup> Consult Factory

CONTACT FACTORY FOR DIFFERENT WAVELENGTHS.

A9A Series

PHOTOMETRICS

Relative Spectral Power Distribution



NARROW SPECTRUM AMBER	
Peak Wavelength	Dominant Wavelength
572.1	578