

## C0 Series

**Craft Lite®**

### Extreme Series | Surface Mount



#### APPLICATIONS:

- Food Processing (NSF Certified Splash Zone, Food Zone)
- Garage & Canopy
- Industrial & Commercial
- Transit & Municipal
- Wet Location (ETL/cETL Listed)

#### FEATURES:

- Luminaires adaptable to your needs
- L70 is >60,000 hours
- Available in Stainless Steel construction
- Premium Driver with Dimming standard
- Every luminaire tested to assure customer satisfaction
- 3G Vibration Test rating
- 5-Year limited warranty

### SPECIFICATIONS

#### HOUSING:

Constructed of 20GA (0.036 inch) zinc coated steel for unmatched corrosion protection. Featuring a double channel, one welded inside the other, with space between the channel sides to capture the diffuser. Threaded hubs are continuously welded into the channel ends providing a sealed wireway access. Removable plugs seal the hubs when not utilized.

**Food Zone:** All external metal components of stainless steel (S4 Finish Standard).

#### OPTIONAL PREMIUM MATERIALS:

S4 - All metal components of 304 stainless steel.

#### FINISH:

Painted surfaces are two mil of white polyester enamel, custom colors available.

#### LENS:

0.125 inch StarFrost® Acrylic with 50% DR content for durability, smooth side out. See ordering information for other high quality acrylic and polycarbonate lens options. A two piece lens with center joiner band is available.

#### END CAPS:

Die formed of 18GA (0.048 inch) stainless steel. A threaded, knurled ring secures the end cap to the luminaire housing. End caps secure lens.

#### GASKETING:

EPDM is used in the housing channels and neoprene end caps.

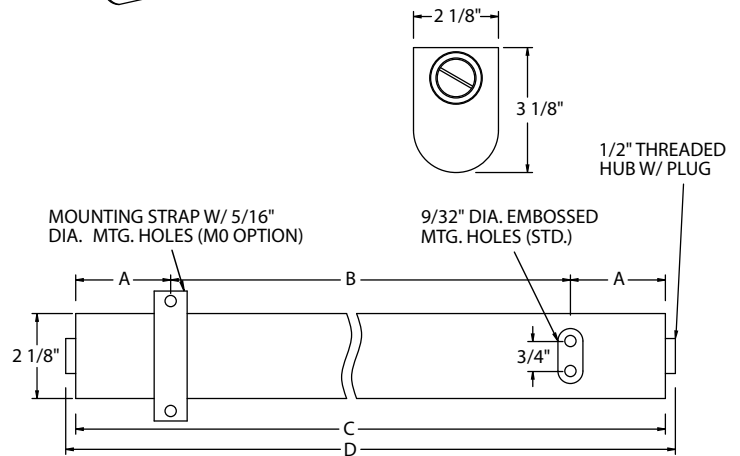
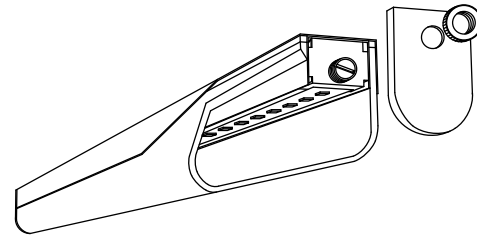
#### ELECTRICAL:

High efficiency LED/Driver combination delivers 160 Lumens/Watt raw array efficacy with 80+ CRI. 4000K color temperature is standard with options for 2700K, 3000K, 3500K, and 5000K. 0-10V dimming comes standard with other control options available. THD <10% @ 120V, <15% @ 277V, PF > 0.95.

#### MOUNTING:

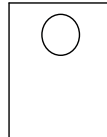
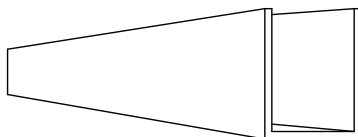
Surface, chain, or pendant options available for covered ceiling installations. Continuous row luminaires manufactured with aligning pins and utilize joiner bands. For further information, contact Sales Representative.

**Splash and Food Zone:** Surface or continuous row for covered ceiling installations only.



LENGTH (ft)	WEIGHT (lbs)	DIMENSIONS IN INCHES			
		A	B	C	D
2	8	3 19/32	18	25 3/16	26 5/16
3	10	2 3/16	32	36 1/4	37 3/8
4	12	7 5/8	32	47 1/4	48 3/8

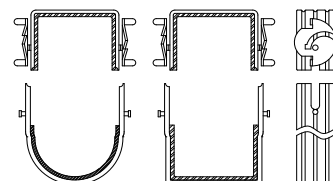
### FEATURES | OPTIONS



#### SQUARE LENS MODELS AVAILABLE

L9W = White Square Polycarbonate  
L9P = Prismatic Square Polycarbonate

#### C0 JOINER BANDS



AG-TD-111025

Due to continuous development and improvements, specifications are subject to change without notice.

# C0 Series — Wet & NSF Splash Zone Locations

## PRODUCT ORDERING CODE

SERIES	LENGTH	MOUNTING	VOLTAGE	CCT	CRI	LUMENS	FINISH	LENS	DIMMING	OPTIONS
			UNV						LD	
PMCO Wet Location			UNV 120 - 277 VAC		CRI83 83 CRI				LD Dimming 0-10V	
PMSCO NSF Splash Zone <sup>1</sup>					CRI90 90 CRI					
	2 2 FT			27K 2700K <sup>4</sup>			PZ White Painted Zinc Steel			
	3 3 FT			3K 3000K			S4 Stainless Steel <sup>3</sup>			
	4 4 FT			35K 3500K						
				4K 4000K						
				5K 5000K						
		MS1 Marine Straps Zinc						L3 0.125 White Acrylic (Cell Cast)		
		MS2 Marine Straps Stainless						L4 0.140 50% DR Ext. Prismatic Acrylic (P20)		
		CM Cable* Mount						L5 0.125 StarFrost® Acrylic (base)		
		PM Pendant** Mount						L7 0.125 White Polycarbonate		
		SF Surface Mount <sup>3</sup>						L8 0.156 Prismatic Polycarbonate (P12)		
		Surface Mount with						L9W White Square Polycarbonate		
		SC Bracket (for chain* mount or standoff)						L9P Prismatic Square Polycarbonate		
		*Requires third-party hardware								
		**Requires third-party mounting stem and hardware								
	2 FT					19L 1900 lm (16W)				F1 GLR/HLR Fusing (Fast)
	3 FT					28L 2800 lm (21W)				F2 GMF/HLR Fusing (Slow)
	4 FT					38L 3800 lm (27W)				M3C In-Row Center <sup>7</sup>
										M3E In-Row End <sup>7</sup>
										J8 Wire Guard <sup>8</sup>
										P11 Guardcraft® Antimicrobial Coating <sup>9</sup>
										T3 Tamper Resistant (Hex w/pin or other) <sup>3</sup>
										T6 Screw-on End Caps (Requires W5)
										T7 Hub Cap (Replaces Ring & Plug)
										W5 Rear Wire Entry <sup>5</sup>

### Footnotes:

<sup>1</sup> NSF Splash Zone luminaires (PMS prefix) may become soiled, but are outside the danger of recontamination

<sup>3</sup> Required for 3G rating

<sup>4</sup> Only 90 CRI

<sup>5</sup> Consult Factory

<sup>7</sup> Refer to In-Row Construction drawing below to determine necessary center & end units. Every In-Row luminaire must include two ends (M3E), one or more centers (M3C) and joiner bands (drawing details pg. 1)

<sup>8</sup> Is not available for NSF Splash and Food Zones

<sup>9</sup> Only Available with White Painted Zinc Steel Finish

## C0 Series – NSF Food Zone Location

### PRODUCT ORDERING CODE

SERIES	LENGTH	MOUNTING	VOLTAGE	CCT	CRI	LUMENS	FINISH	LENS	DIMMING	OPTIONS
PMFC0		SF	UNV				S4		LD	
PMFC0 NSF Food Zone <sup>2</sup>			UNV 120 - 277 VAC		CRI83 83 CRI CRI90 90 CRI		S4 Stainless Steel <sup>3</sup>		LD Dimming 0-10V	
	2 2 FT 3 3 FT 4 4 FT			27K 2700K <sup>4</sup> 3K 3000K 35K 3500K 4K 4000K 5K 5000K				L4 0.140 50% DR Ext. Prismatic Acrylic (P20) L5 0.125 StarFrost® Acrylic (base)		
		SF Surface Mount <sup>3</sup>								
						2 FT 19L 1900 lm (16W) 3 FT 28L 2800 lm (21W) 4 FT 38L 3800 lm (27W)				F1 GLR/HLR Fusing (Fast) F2 GMF/HLR Fusing (Slow) T7 Hub Cap (Replaces Ring & Plug) W5 Rear Wire Entry <sup>5</sup>
						Selection must match the selected length	Lumens (Nominal)			

**Footnotes:**

<sup>2</sup> NSF Food Zone luminaires (PMF prefix) come in DIRECT CONTACT with food

<sup>3</sup> Required for 3G rating

<sup>4</sup> Only 90 CRI

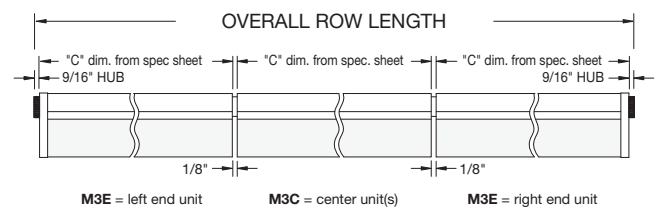
<sup>5</sup> Consult Factory

**LUMEN OUTPUT:** All listed lumen values are nominal. Lens transmission and fixture efficiency affect overall lumens.

**INDIVIDUAL UNITS STANDARD**

**NOT ALL COMBINATIONS POSSIBLE**

### IN-ROW CONSTRUCTION



AG-TD-111025

Due to continuous development and improvements, specifications are subject to change without notice.