

C8 Series

Craft Lite®

Extreme Series | Surface Mount



Food Processing:



Hazardous Location:



APPLICATIONS:

- Food Processing (NSF Certified Splash Zone, Food Zone)
- Garage & Canopy
- Hazardous Location (ETL/cETL Class I, Division 2; Groups A,B,C & D Class II, Division 2; Groups F & G)
- Industrial & Commercial
- Transit & Municipal
- Wet Location (ETL/cETL Listed)

FEATURES:

- Tested to LM79, LM80
- L70 is >60,000 hours
- Square version available
- Available in Stainless Steel construction
- Premium Driver with Dimming standard
- Every luminaire tested to assure customer satisfaction
- 5-Year limited warranty

SPECIFICATIONS

HOUSING:

Constructed of 20GA (0.036 inch) zinc coated steel for unmatched corrosion protection. Featuring a double channel, one welded inside the other, with space between the channel sides to capture the diffuser. Threaded hubs are continuously welded into the channel ends providing a sealed wireway access. Removable plugs seal the hubs when not utilized.

Food Zone: All external metal components of stainless steel (S4 Finish Standard).

OPTIONAL PREMIUM MATERIALS:

S4 - All metal components of 304 stainless steel.

FINISH:

Painted surfaces are two mil of white polyester enamel, custom colors available.

LENS:

0.125 inch StarFrost® Acrylic with 50% DR content for durability, smooth side out. See ordering information for other high quality acrylic and polycarbonate lens options. A two piece lens with center joiner band is available.

END CAPS:

Die formed of 18GA (0.048 inch) stainless steel. A threaded, knurled ring secures the end cap to the luminaire housing. End caps secure lens.

GASKETING:

EPDM is used in the housing channels and end caps.

ELECTRICAL:

High efficiency LED/Driver combination delivers 160 Lumens/Watt raw array efficacy with 80+ CRI. 4000K color temperature is standard with options for 2700K, 3000K, 3500K, and 5000K. 0-10V dimming comes standard with other control options available. THD <10% @ 120V, <15% @ 277V, PF> 0.95.

MOUNTING:

Surface, chain, or pendant options available for covered ceiling installations. Continuous row luminaires manufactured with aligning pins and utilize joiner bands. For further information, contact Sales Representative.

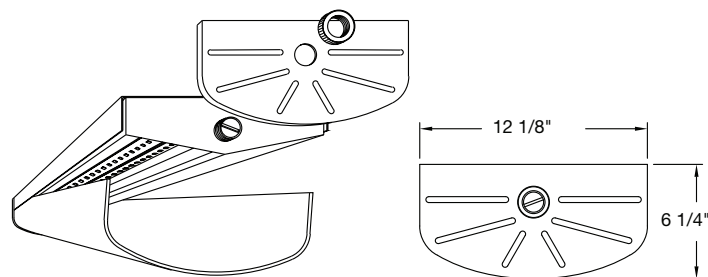
Splash and Food Zone: Surface or continuous row for covered ceiling installations only.

TEMPERATURE CODE:

Class I, Div. 2 = T4A (120 °C); Class II, Div. 2 = T6 (85 °C)

(No luminaire surface exposed to the hazardous atmosphere will exceed this temperature. Based on 40 °C (104 °F) ambient.)

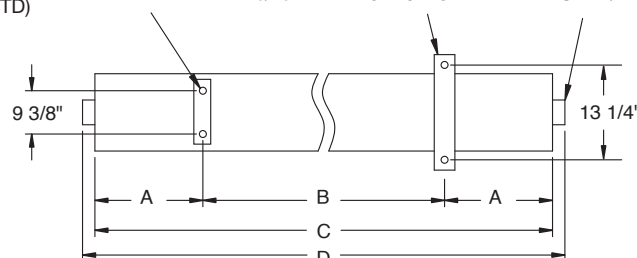
Temperature Range: -20 to 35 °C (-4 to 95 °F)



1/8" x 1" BAR
WELDED TO HOUSING
W/ 9/32" DIA. MTG. HOLES
(STD)

OPTIONAL MTG STRAP W/
5/16" DIA. MTG. HOLES

3/4" THREADED
HUB W/ PLUG

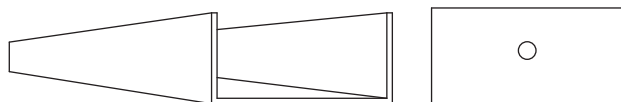


1/2" THREADED FLANGE (OPTIONAL, WET LOC.)

LENGTH (ft)	WEIGHT (lbs)	DIMENSIONS IN INCHES			
		A	B	C	D
1	9	2 3/32	10	14 3/16	15 5/16
2	17	4 19/32	16	25 3/16	26 5/16
3	22	10 1/8	16	36 1/4	37 3/8
4	27	7 5/8	32	47 1/4	48 3/8
5	34	13 1/8	32	58 1/4	59 3/8
6	38	10 5/8	48	69 1/4	70 3/8
7	44	8 5/32	64	80 5/16	81 7/16
8	50	13 21/32	64	91 5/16	92 7/16

FEATURES | OPTIONS

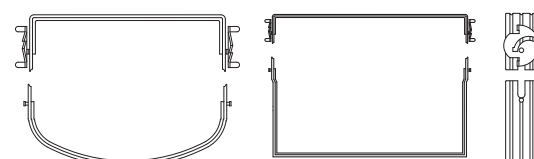
SQUARE POLYCARBONATE LENS AND END CAP



SQUARE LENS MODELS AVAILABLE

L9W = White Square Polycarbonate
L9P = Prismatic Square Polycarbonate

C8 JOINER BAND



AG-TD-111025

Due to continuous development and improvements, specifications are subject to change without notice.

PRODUCT ORDERING CODE

Footnotes:

- ¹ NSF Splash Zone luminaires (PMS prefix) may become soiled, but are outside the danger of recontamination
- ³ Required for 3G rating
- ⁴ Only 90 CRI
- ⁵ Consult Factory
- ⁶ The 20W Battery Backup Remote powers a minimum of 3 luminaires and must be mounted on the outside of the luminaire or in a remote dry/damp location
- ⁷ Refer to In-Row Construction drawing below to determine necessary center & end units. Every In-Row luminaire must include two ends (M3E), one or more centers (M3C) and joiner bands (drawing details pg. 1)
- ⁸ Is not available for NSF Splash and Food Zones
- ⁹ Only available with White Painted Zinc Steel Finish
- ¹¹ Not available on 1 FT lengths

PRODUCT ORDERING CODE

Footnotes:

² NSF Food Zone luminaires (PMF prefix) come in DIRECT CONTACT with food

³ Required for 3G rating

⁴ Only 90 CRI

⁵ Consult Factory

⁶ The 20W Battery Backup Remote powers a minimum of 3 luminaires and must be mounted on the outside of the luminaire or in a remote dry/damp location

¹¹ Not available on 1 FT lengths

C8 Series — Hazardous Location

PRODUCT ORDERING CODE

SERIES	LENGTH	MOUNTING	VOLTAGE	CCT	CRI	LUMENS	FINISH	LENS	DIMMING	OPTIONS
PMHC8			UNV						LD	
PMHC8 Hazardous			UNV 120 - 277 VAC		CRI83 83 CRI CRI90 90 CRI				LD Dimming 0-10V	
	1 1 FT 2 2 FT 3 3 FT 4 4 FT 5 5 FT 6 6 FT 7 7 FT 8 8 FT	SF Surface Mount ³ Surface Mount with Bracket (for chain* mount or standoff) PM Pendant** Mount *Requires third-party hardware **Requires third-party mounting stem and hardware and S4 Option		27K 2700K ⁴ 3K 3000K 35K 3500K 4K 4000K 5K 5000K			PZ White Painted Zinc Steel S4 Stainless Steel ³	L3 0.125 White Acrylic (Cell Cast) LH3 0.150 Extra Heavy White Acrylic L4 0.140 50% DR Ext. Prismatic Acrylic (P20) L5 .0125 StarFrost® Acrylic (base) L7 0.125 White Polycarbonate L8 0.156 Prismatic Polycarbonate (P12) L9W White Square Polycarbonate L9P Prismatic Square Polycarbonate		
						1 FT 23L 2300 lm (19W) 47L 4700 lm (37W) 2 FT 47L 4700 lm (37W) 93L 9300 lm (72W) 3 FT 70L 7000 lm (53W) 140L 14000 lm (107W) 4 FT 93L 9300 lm (72W) 186L 18600 lm (139W) 5 FT 116L 11600 lm (88W) 232L 23200 lm (176W) 6 FT 139L 13900 lm (107W) 279L 27900 lm (213W) 7 FT 163L 16300 lm (125W) 325L 32500 lm (250W) 8 FT 186L 18600 lm (139W) 372L 37200 lm (285W)				F1 GLR/HLR Fusing (Fast) F2 GMF/HLR Fusing (Slow) M3C In-Row Center ⁷ M3E In-Row End ⁷ J8 Wire Guard ⁸ P11 Guardcraft® Antimicrobial Coating ⁹ T3 Tamper Resistant (Hex w/pin or other) ³ T6 Screw-on End Caps (Requires W5) T7 Hub Cap (Replaces Ring & Plug) W5 Rear Wire Entry*** ⁵
Footnotes:									***Requires S4 Option	
³ Required for 3G rating									(Battery Backup NOT Available for Hazardous Location)	
⁴ Only 90 CRI										
⁵ Consult Factory										
⁷ Refer to In-Row Construction drawing below to determine necessary center & end units. Every In-Row luminaire must include two ends (M3E), one or more centers (M3C) and joiner bands (drawing details pg. 1)										
⁸ Is not available for NSF Splash and Food Zones										
Selection must match the selected length						Lumens (Nominal)				

Footnotes:

³ Required for 3G rating

⁴ Only 90 CRI

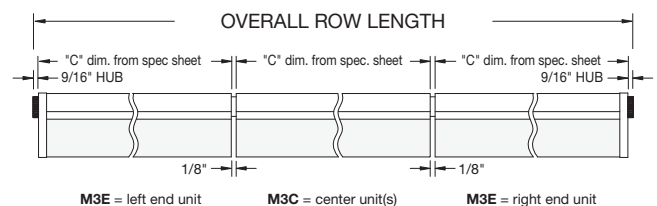
⁵ Consult Factory

⁷ Refer to In-Row Construction drawing below to determine necessary center & end units. Every In-Row luminaire must include two ends (M3E), one or more centers (M3C) and joiner bands (drawing details pg. 1)

⁸ Is not available for NSF Splash and Food Zones

⁹ Only Available with White Painted Zinc Steel Finish

IN-ROW CONSTRUCTION



LUMEN OUTPUT: All listed lumen values are nominal. Lens transmission and fixture efficiency affect overall lumens.

INDIVIDUAL UNITS STANDARD

NOT ALL COMBINATIONS POSSIBLE

AG-TD-111025

Due to continuous development and improvements, specifications are subject to change without notice.