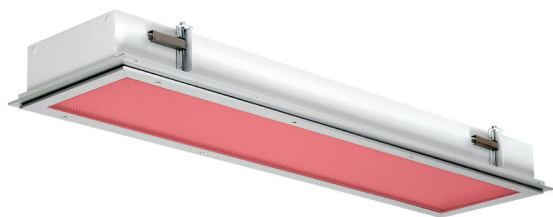


## F1R Series — Vivarium Red

### Flange Mount



#### APPLICATIONS:

- Cleanroom (Classes 100-100,000; ISO Classes 5-9)
- Food Processing (NSF Certified Splash Zone, Food Zone)
- Industrial & Commercial
- Transit & Municipal
- Wet Location (ETL/cETL Listed)
- Pharmaceutical
- Biology
- Vivarium
- Laboratory

#### FEATURES:

- 632 nm Red LED
- Available with IP 65 rating, add -IP65 suffix (requires stainless steel lens frame & trim frame)
- L70 ≥ 132,500 hours
- Available in Stainless Steel construction
- Premium Driver with Dimming standard
- Type IC
- Every luminaire tested to assure customer satisfaction
- 5-Year limited warranty

### SPECIFICATIONS

#### HOUSING:

Constructed of nominal 20GA (0.036) zinc coated steel for unmatched corrosion protection. Two welded, tapered, threaded flanges on the top provide a sealed wireway access. All seams are sealed with a long life acrylic sealant.

#### FINISH:

Painted surfaces are two mil white polyester enamel, special colors available.

#### LENS:

0.125 StarFrost Acrylic with 50% DR content for durability, smooth side out. See Ordering Information for other high quality lens options.

#### LENS FRAME:

Exclusively designed, heavy duty, extruded, anodized aluminum with stainless steel captive screws used to hold the lens frame tight to the housing. The frame is hinged for support while servicing.

**Food Zone:** Lens frame and trim frame of stainless steel (S6 option std).

#### REFLECTOR:

Fabricated of aluminum, painted with a minimum reflectance of 88%.

#### GASKETING:

An extruded, ribbed vinyl gasket seals the lens into the frame; with our exclusive, mechanically held, extruded, silicone gasket used to seal the frame to the housing.

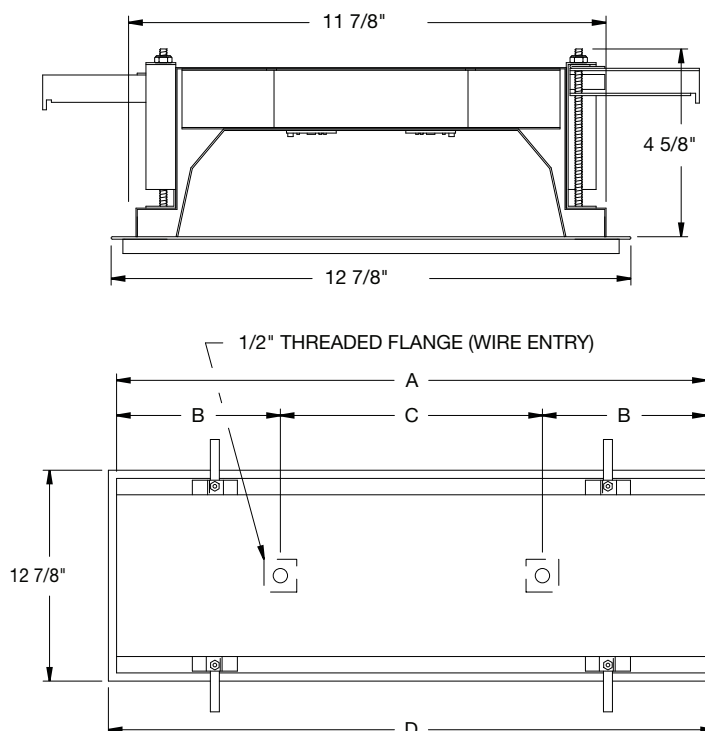
**Food Zone:** Silicone sealant is used to seal the lens into the frame, with extruded EPDM sealing the frame to the housing.

#### ELECTRICAL:

High efficiency LED/Driver combination delivers red light output suitable for animal research and other applications. 0-10V dimming comes standard with other control options available. THD <10%@120V, <15%@277V, PF> 0.95.

#### MOUNTING:

Recessed flange mounting only. Not suitable for T-Bar grid ceilings or surface mounting.

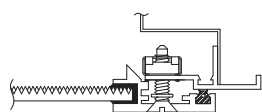


#### CUT-OUT DIMENSIONS:

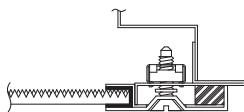
2FT: 12 1/8" x 24 1/4"  
4FT: 12 1/8" x 48 1/4"

LENGTH (ft)	WEIGHT (lbs)	DIMENSIONS IN INCHES			
		A	B	C	D
2	16	23 31/32	5 3/8	13 1/4	25
4	26	47 15/16	5	38	49 1/16
8	44	95 15/16	5	86	97

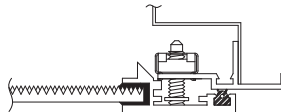
### LENS FRAME DETAILS



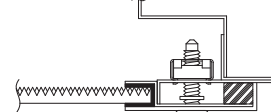
ALUMINUM  
LENS FRAME DETAIL



STAINLESS STEEL  
LENS FRAME DETAIL



SPLASH ZONE  
LENS FRAME DETAIL



FOOD ZONE  
LENS FRAME DETAIL

JC-TD-120325

Due to continuous development and improvements, specifications are subject to change without notice.

# F1R Series — Wet & NSF Splash Zone Locations

## PRODUCT ORDERING CODE

SERIES	LENGTH	MOUNTING	VOLTAGE	COLOR	LUMENS	FINISH	LENS	DIMMING	OPTIONS
		FM	UNV	RD				LD	
PMF1R Wet Location			UNV 120 - 277 VAC					LD Dimming 0-10V	
PMSF1R NSF Splash Zone <sup>1</sup>				RD Red					
	2 2 FT					PZ Painted Zinc Steel Housing, Aluminum Lens Frame & Trim Frame			
	4 4 FT					S2 Stainless Steel Housing, Aluminum Lens Frame & Trim Frame			
	8 8 FT					S3 Stainless Steel Complete			
		FM Flange Mount				S5 Stainless Steel Lens Frame, Painted Zinc Steel Trim Frame & Housing			
						S6 Stainless Steel Lens & Trim Frame, Painted Zinc Steel Housing			
						L3 0.125 White Acrylic (Cell Cast)			
						LH3 0.150 Extra Heavy White Acrylic			
						L4 0.140 50% DR Ext. Prismatic Acrylic (P20)			
						L5 0.118 StarFrost® Acrylic (base)			
						L7 0.125 White Polycarbonate			
						L8 0.156 Prismatic Polycarbonate (P12)			
						L9 0.187 Tempered Glass (P62) <sup>4</sup>			
						LJ4 0.020 White Acrylic Overlay (Array Side)			
	2 FT				08L 849 lm (25W)			BBU 10W Battery Backup, Integral	
					17L 1669 lm (50W)			BBU1 12W Battery Backup, Integral	
	4 FT				08L 849 lm (25W)			BBUR2 20W Battery Backup, Remote <sup>5</sup>	
					17L 1669 lm (50W)			F1 GLR/HLR Fusing (Fast)	
	8 FT				08L 849 lm (25W)			F2 GMF/HLR Fusing (Slow)	
					17L 1669 lm (50W)			IP65 IP Rated (Requires S6 Option)	
								P11 Guardcraft® Antimicrobial Coating <sup>6</sup>	
								T3 Tamper Resistant (Hex w/pin or other)	
								V1 External Gasketing	
					Selection must match the selected length	Lumens (Typical)			

### Footnotes:

<sup>1</sup> NSF Splash Zone luminaires (PMS prefix) may become soiled, but are outside the danger of recontamination

<sup>4</sup> Only Available with Stainless Steel Lens Frame

<sup>5</sup> The 20W Battery Backup Remote powers a minimum of 3 luminaires and must be mounted on the outside of the luminaire or in a remote dry/damp location.

<sup>6</sup> Only Available with White Painted Zinc Steel Finish

CONTACT FACTORY FOR DIFFERENT WAVELENGTHS,  
SPECTRUMS, OR DUAL CIRCUITING INFORMATION.

JC-TD-120325

Due to continuous development and improvements, specifications are subject to change without notice.

# F1R Series — NSF Food Zone Location

## PRODUCT ORDERING CODE

SERIES	LENGTH	MOUNTING	VOLTAGE	COLOR	LUMENS	FINISH	LENS	DIMMING	OPTIONS
PMFF1R		FM	UNV	RD				LD	
PMFF1R NSF Food Zone <sup>2</sup>			UNV 120 - 277 VAC					LD Dimming 0-10V	
	2 2 FT 4 4 FT 8 8 FT			RD Red		S3 Stainless Steel Complete S6 Stainless Steel Lens & Trim Frame, Painted Zinc Steel Housing			
		FM Flange Mount					L4 0.140 50% DR Ext. Prismatic Acrylic (P20) L5 0.118 StarFrost® Acrylic (base) L9 0.187 Tempered Glass (P62) <sup>4</sup>		
					2 FT 4 FT 8 FT				
					08L 849 lm (25W) 17L 1669 lm (50W)				BBU 10W Battery Backup, Integral BBU1 12W Battery Backup, Integral BBUR2 20W Battery Backup, Remote <sup>5</sup>
					08L 849 lm (25W) 17L 1669 lm (50W)				F1 GLR/HLR Fusing (Fast) F2 GMF/HLR Fusing (Slow) P11 Guardcraft® Antimicrobial Coating <sup>6</sup> V1 External Gasketing
					08L 849 lm (25W) 17L 1669 lm (50W)				
					Selection must match the selected length				

### Footnotes:

<sup>2</sup> NSF Food Zone luminaires (PMF prefix) come in DIRECT CONTACT with food

<sup>4</sup> Only Available with Stainless Steel Lens Frame

<sup>5</sup> The 20W Battery Backup Remote powers a minimum of 3 luminaires and must be mounted on the outside of the luminaire or in a remote dry/damp location.

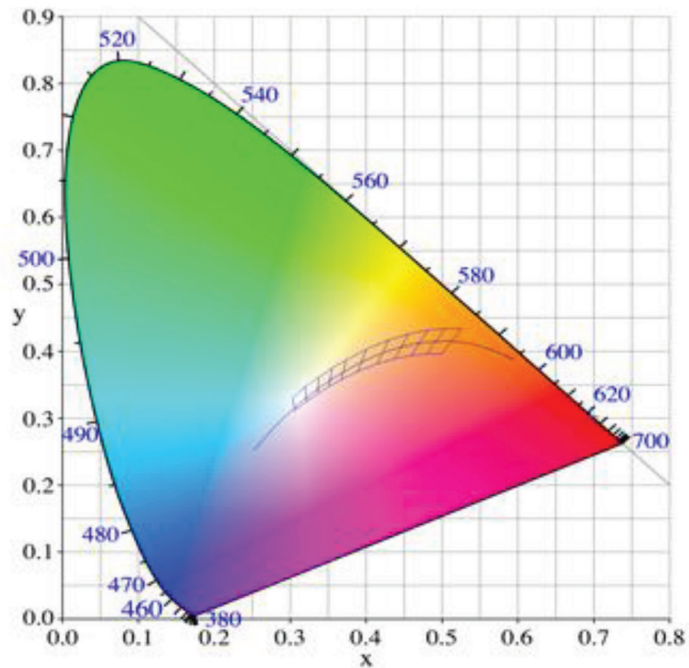
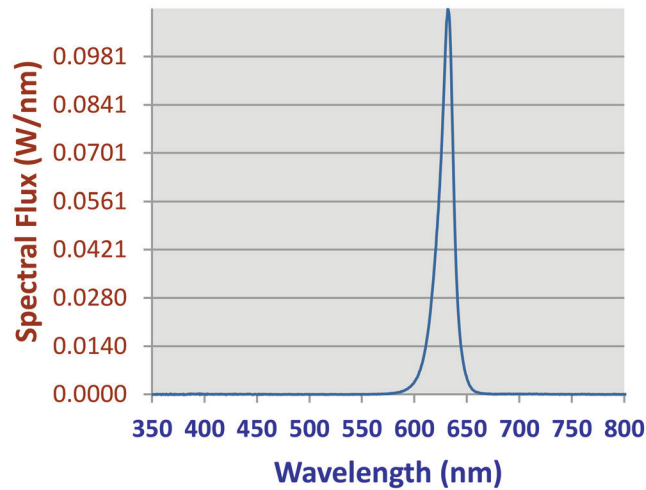
<sup>6</sup> Only Available with White Painted Zinc Steel Finish

CONTACT FACTORY FOR DIFFERENT WAVELENGTHS,  
SPECTRUMS, OR DUAL CIRCUITING INFORMATION.

F1R Series

PHOTOMETRICS

Relative Spectral Power Distribution



VIVARIUM RED	
Peak Wavelength	Dominant Wavelength
632.2	622