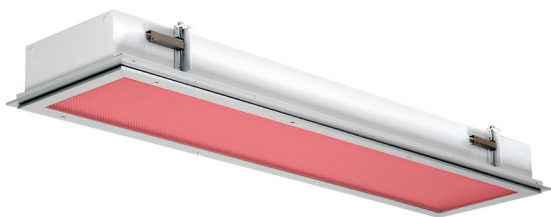


F1RD Series — Vivarium Red, Dual Circuit

Flange Techniseal Troffer

Flange Mount



APPLICATIONS:

- Cleanroom (Classes 100-100,000; ISO Classes 5-9)
- Food Processing (NSF Certified Splash Zone, Food Zone)
- Industrial & Commercial
- Transit & Municipal
- Wet Location (ETL/cETL Listed)
- Pharmaceutical
- Biology
- Vivarium
- Laboratory

FEATURES:

- 632 nm Red and White LEDs with dual circuit function
- Available with IP 65 rating, add -IP65 suffix (requires stainless steel lens frame & trim frame)
- L70 ≥ 132,500 hours
- Available in Stainless Steel construction
- Premium Driver with Dimming standard
- Type IC
- Every luminaire tested to assure customer satisfaction
- 5-Year limited warranty

SPECIFICATIONS

HOUSING:

Constructed of nominal 20GA (0.036) zinc coated steel for unmatched corrosion protection. Two welded, tapered, threaded flanges on the top provide a sealed wireway access. All seams are sealed with a long life acrylic sealant.

FINISH:

Painted surfaces are two mil white polyester enamel, special colors available.

LENS:

0.125 StarFrost Acrylic with 50% DR content for durability, smooth side out. See Ordering Information for other high quality lens options.

LENS FRAME:

Exclusively designed, heavy duty, extruded, anodized aluminum with stainless steel captive screws used to hold the lens frame tight to the housing. The frame is hinged for support while servicing.

Food Zone: Lens frame and trim frame of stainless steel (S6 option std).

REFLECTOR:

Fabricated of aluminum, painted with a minimum reflectance of 88%.

GASKETING:

An extruded, ribbed vinyl gasket seals the lens into the frame; with our exclusive, mechanically held, extruded, silicone gasket used to seal the frame to the housing.

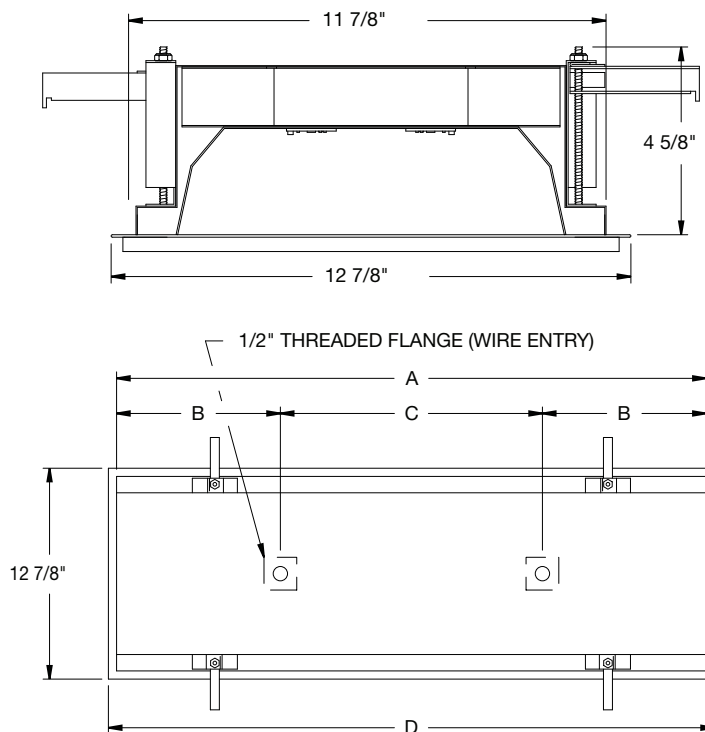
Food Zone: Silicone sealant is used to seal the lens into the frame, with extruded EPDM sealing the frame to the housing.

ELECTRICAL:

High efficiency LED/Driver combination delivers white and red light output suitable for animal research and other applications. 0-10V dimming comes standard with other control options available. THD <10%@120V, <15%@277V, PF> 0.95.

MOUNTING:

Recessed flange mounting only. Not suitable for T-Bar grid ceilings or surface mounting.

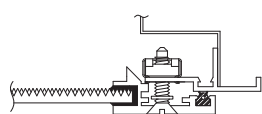


CUT-OUT DIMENSIONS:

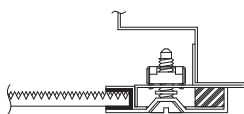
2FT: 12 1/8" x 24 1/4"
4FT: 12 1/8" x 48 1/4"

LENGTH (ft)	WEIGHT (lbs)	DIMENSIONS IN INCHES			
		A	B	C	D
2	16	23 31/32	5 3/8	13 1/4	25
4	26	47 15/16	5	38	49 1/16
8	44	95 15/16	5	86	97

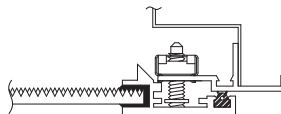
LENS FRAME DETAILS



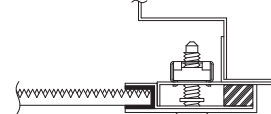
ALUMINUM
LENS FRAME DETAIL



STAINLESS STEEL
LENS FRAME DETAIL



SPLASH ZONE
LENS FRAME DETAIL



FOOD ZONE
LENS FRAME DETAIL

JC-TD-120325

Due to continuous development and improvements, specifications are subject to change without notice.

F1RD Series — Wet & NSF Splash Zone Locations

PRODUCT ORDERING CODE

SERIES	LENGTH	MOUNTING	VOLTAGE	CCT	CRI	LUMENS	COLOR	LUMENS	FINISH	LENS	DIMMING	OPTIONS
PMF1RD Wet Location PMSF1RD NSF Splash Zone ¹	2 2 FT 4 4 FT 8 8 FT	FM Flange Mount	UNV 120 - 277 VAC	27K 2700K ³ 3K 3000K 35K 3500K 4K 4000K 5K 5000K	CRI83 83 CRI CRI90 90 CRI		RD Red		PZ Painted Zinc Steel Housing, Aluminum Lens Frame & Trim Frame S2 Stainless Steel Housing, Aluminum Lens Frame & Trim Frame S3 Stainless Steel Complete S5 Stainless Steel Lens Frame, Painted Zinc Steel Trim Frame & Housing S6 Stainless Steel Lens & Trim Frame, Painted Zinc Steel Housing		LD Dimming 0-10V	
										L3 0.125 White Acrylic (Cell Cast) LH3 0.150 Extra Heavy White Acrylic L4 0.140 50% DR Ext. Prismatic Acrylic (P20) L5 0.118 StarFrost® Acrylic (base) L7 0.125 White Polycarbonate L8 0.156 Prismatic Polycarbonate (P12) L9 0.187 Tempered Glass (P62) ⁴ LJ4 0.020 White Acrylic Overlay (Array Side)		
	2 FT			19L 1900 lm (18W) 37L 3700 lm (33W)				08L 849 lm (25W) 17L 1699 lm (50W)		BBU 10W Battery Backup, Integral BBU1 12W Battery Backup, Integral		
	4 FT			37L 3700 lm (33W) 74L 7400 lm (66W)				08L 849 lm (25W) 17L 1699 lm (50W)		BBUR2 20W Battery Backup, Remote ⁵ F1 GLR/HLR Fusing (Fast) F2 GMF/HLR Fusing (Slow)		
	8 FT			74L 7400 lm (66W) 148L 14800 lm (131W)				08L 849 lm (25W) 17L 1699 lm (50W)		IP65 IP Rated (Requires S6 Option) P11 Guardcraft® Antimicrobial Coating ⁶ T3 Tamper Resistant (Hex w/pin or other) V1 External Gasketing		
				Selection must match the selected length		Lumens (Typical)		Selection must match the selected length		Lumens (Typical)		

Footnotes:

¹ NSF Splash Zone luminaires (PMS prefix) may become soiled, but are outside the danger of recontamination

³ Only 90 CRI

⁴ Only Available with Stainless Steel Lens Frame

⁵ The 20W Battery Backup Remote powers a minimum of 3 luminaires and must be mounted on the outside of the luminaire or in a remote dry/damp location.

⁶ Only Available with White Painted Zinc Steel Finish

CONTACT FACTORY FOR DIFFERENT WAVELENGTHS,
SPECTRUMS, OR DUAL CIRCUITING INFORMATION.

JC-TD-120325

Due to continuous development and improvements, specifications are subject to change without notice.

PRODUCT ORDERING CODE

Footnotes:

- ² NSF Food Zone luminaires (PMF prefix) come in DIRECT CONTACT with food
- ³ Only 90 CRI
- ⁴ Only Available with Stainless Steel Lens Frame
- ⁵ The 20W Battery Backup Remote powers a minimum of 3 luminaires and must be mounted on the outside of the luminaire or in a remote dry/damp location.
- ⁶ Only Available with White Painted Zinc Steel Finish

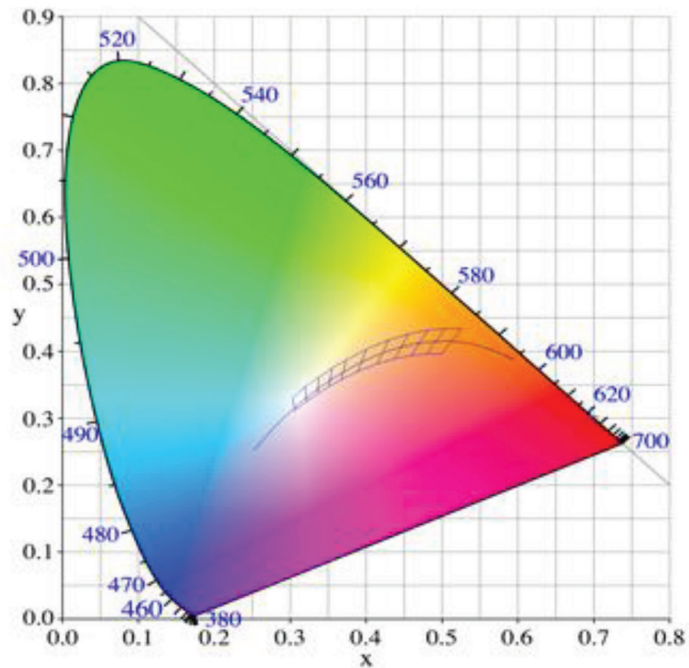
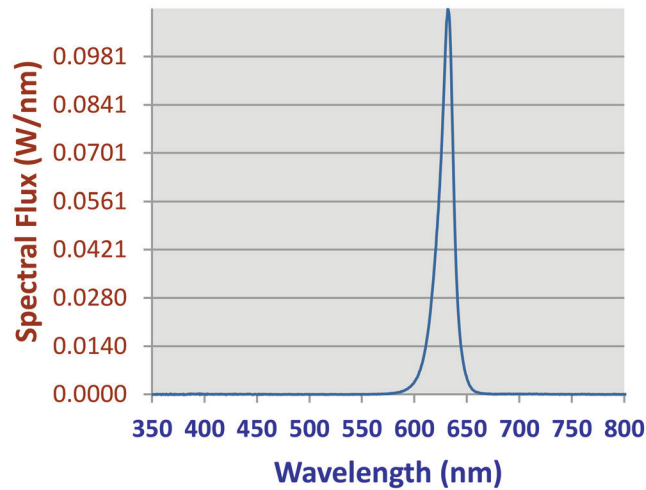
JC-TD-120325

© Paramount Lighting • 3625 Swenson Ave • St. Charles, IL 60174 • 800-521-5405 • www.paramountlighting.com

F1RD Series

PHOTOMETRICS

Relative Spectral Power Distribution



VIVARIUM RED	
Peak Wavelength	Dominant Wavelength
632.2	622