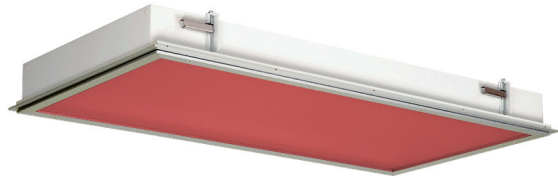


## F2R Series — Vivarium Red

### Flange Mount



#### APPLICATIONS:

- Cleanroom (Classes 100-100,000; ISO Classes 5-9)
- Food Processing (NSF Certified Splash Zone, Food Zone)
- Industrial & Commercial
- Transit & Municipal
- Wet Location (ETL/cETL Listed)
- Pharmaceutical
- Biology
- Vivarium
- Laboratory

#### FEATURES:

- 632 nm Red LED
- Available with IP 65 rating, add -IP65 suffix (requires stainless steel lens frame & trim frame)
- L70 ≥ 132,500 hours
- Available in Stainless Steel construction
- Premium Driver with Dimming standard
- Type IC
- Every luminaire tested to assure customer satisfaction
- 5-Year limited warranty

### SPECIFICATIONS

#### HOUSING:

Constructed of nominal 20GA (0.036) zinc coated steel for unmatched corrosion protection. Two welded, tapered, threaded flanges on the top provide a sealed wireway access. All seams are sealed with a long life acrylic sealant.

#### FINISH:

Painted surfaces are two mil white polyester enamel, special colors available.

#### LENS:

0.125 StarFrost Acrylic with 50% DR content for durability, smooth side out. See Ordering Information for other high quality lens options.

#### LENS FRAME:

Exclusively designed, heavy duty, extruded, anodized aluminum with stainless steel captive screws used to hold the lens frame tight to the housing. The frame is hinged for support while servicing.

**Food Zone:** Lens frame and trim frame of stainless steel (S6 option std).

#### REFLECTOR:

Fabricated of aluminum, painted with a minimum reflectance of 88%.

#### GASKETING:

An extruded, ribbed vinyl gasket seals the lens into the frame; with our exclusive, mechanically held, extruded, silicone gasket used to seal the frame to the housing.

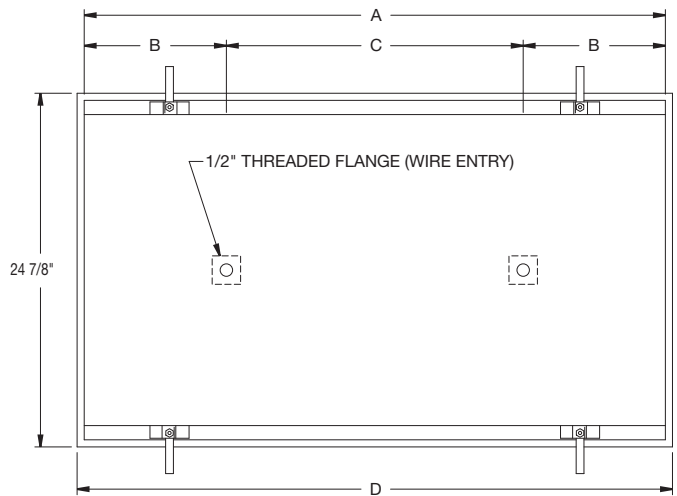
**Food Zone:** Silicone sealant is used to seal the lens into the frame, with extruded EPDM sealing the frame to the housing.

#### ELECTRICAL:

High efficiency LED/Driver combination delivers red light output suitable for animal research and other applications. 0-10V dimming comes standard with other control options available. THD <10%@120V, <15%@277V, PF> .95.

#### MOUNTING:

Recessed flange mounting only. Not suitable for T-Bar grid ceilings or surface mounting.

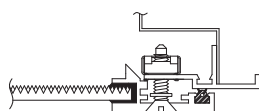


#### CEILING CUT-OUT DIMENSIONS:

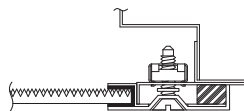
2FT: 24 1/4" x 24 1/4"  
4FT: 24 1/4" x 48 1/4"

LENGTH (ft)	WEIGHT (lbs)	DIMENSIONS IN INCHES			
		A	B	C	D
2	26	23 29/32	5 5/16	13 1/4	24 7/8
4	46	47 15/16	5	38	49 1/16

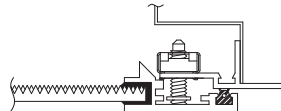
### LENS FRAME DETAILS



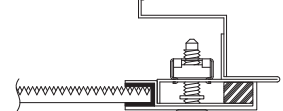
ALUMINUM  
LENS FRAME DETAIL



STAINLESS STEEL  
LENS FRAME DETAIL



SPLASH ZONE  
LENS FRAME DETAIL



FOOD ZONE  
LENS FRAME DETAIL

JC-TD-120325

Due to continuous development and improvements, specifications are subject to change without notice.

# F2R Series — Wet & NSF Splash Zone Locations

## PRODUCT ORDERING CODE

SERIES	LENGTH	MOUNTING	VOLTAGE	COLOR	LUMENS	FINISH	LENS	DIMMING	OPTIONS
<b>PMF2R</b> Wet Location <b>PMSF2R</b> NSF Splash Zone <sup>1</sup>	<b>2</b> 2 FT <b>4</b> 4 FT	<b>FM</b> Flange Mount	<b>UNV</b> 120 - 277 VAC	<b>RD</b> Red				<b>LD</b> Dimming 0-10V	
						<b>PZ</b> Painted Zinc Steel Housing, Aluminum Lens Frame & Trim Frame <b>S2</b> Stainless Steel Housing, Aluminum Lens Frame & Trim Frame <b>S3</b> Stainless Steel Complete <b>S5</b> Stainless Steel Lens Frame, Painted Zinc Steel Trim Frame & Housing <b>S6</b> Stainless Steel Lens & Trim Frame, Painted Zinc Steel Housing			
							<b>L3</b> 0.125 White Acrylic (Cell Cast) <b>LH3</b> 0.150 Extra Heavy White Acrylic <b>L4</b> 0.140 50% DR Ext. Prismatic Acrylic (P20) <b>L5</b> 0.118 StarFrost® Acrylic (base) <b>L7</b> 0.125 White Polycarbonate <b>L8</b> 0.156 Prismatic Polycarbonate (P12) <b>L9</b> 0.187 Tempered Glass (P62) <sup>4</sup> <b>LJ4</b> 0.020 White Acrylic Overlay (Array Side)		
					<b>2 FT</b> <b>4 FT</b>	<b>08L</b> 849 lm (25W) <b>17L</b> 1669 lm (50W) <b>08L</b> 849 lm (25W) <b>17L</b> 1669 lm (50W)		<b>BBU</b> 10W Battery Backup, Integral <b>BBU1</b> 12W Battery Backup, Integral <b>BBUR2</b> 20W Battery Backup, Remote <sup>5</sup> <b>F1</b> GLR/HLR Fusing (Fast) <b>F2</b> GMF/HLR Fusing (Slow) <b>IP65</b> IP Rated (Requires S6 Option) <b>P11</b> Guardcraft® Antimicrobial Coating <sup>6</sup> <b>T3</b> Tamper Resistant (Hex w/pin or other) <b>V1</b> External Gasketing	
					Selection must match the selected length	Lumens (Typical)			

### Footnotes:

<sup>1</sup> NSF Splash Zone luminaires (PMS prefix) may become soiled, but are outside the danger of recontamination

<sup>4</sup> Only Available with Stainless Steel Lens Frame

<sup>5</sup> The 20W Battery Backup Remote powers a minimum of 3 luminaires and must be mounted on the outside of the luminaire or in a remote dry/damp location.

<sup>6</sup> Only Available with White Painted Zinc Steel Finish

CONTACT FACTORY FOR DIFFERENT WAVELENGTHS,  
SPECTRUMS, OR DUAL CIRCUITING INFORMATION.

JC-TD-120325

Due to continuous development and improvements, specifications are subject to change without notice.

## F2R Series — NSF Food Zone Location

### PRODUCT ORDERING CODE

SERIES	LENGTH	MOUNTING	VOLTAGE	COLOR	LUMENS	FINISH	LENS	DIMMING	OPTIONS
PMFF2R		FM	UNV	RD				LD	
PMFF2R NSF Food Zone <sup>2</sup>			UNV 120 - 277 VAC					LD Dimming 0-10V	
	2 2 FT 4 4 FT			RD Red		S3 Stainless Steel Complete S6 Stainless Steel Lens & Trim Frame, Painted Zinc Steel Housing			
		FM Flange Mount					L4 0.140 50% DR Ext. Prismatic Acrylic (P20) L5 0.118 StarFrost® Acrylic (base) L9 0.187 Tempered Glass (P62) <sup>4</sup>		
					2 FT 4 FT				BBU 10W Battery Backup, Integral BBU1 12W Battery Backup, Integral BBUR2 20W Battery Backup, Remote <sup>5</sup> F1 GLR/HLR Fusing (Fast) F2 GMF/HLR Fusing (Slow) P11 Guardcraft® Antimicrobial Coating <sup>6</sup> V1 External Gasketing
					08L 849 lm (25W) 17L 1669 lm (50W) 08L 849 lm (25W) 17L 1669 lm (50W)				
					Selection must match the selected length	Lumens (Typical)			

#### Footnotes:

<sup>2</sup> NSF Food Zone luminaires (PMF prefix) come in DIRECT CONTACT with food

<sup>4</sup> Only Available with Stainless Steel Lens Frame

<sup>5</sup> The 20W Battery Backup Remote powers a minimum of 3 luminaires and must be mounted on the outside of the luminaire or in a remote dry/damp location.

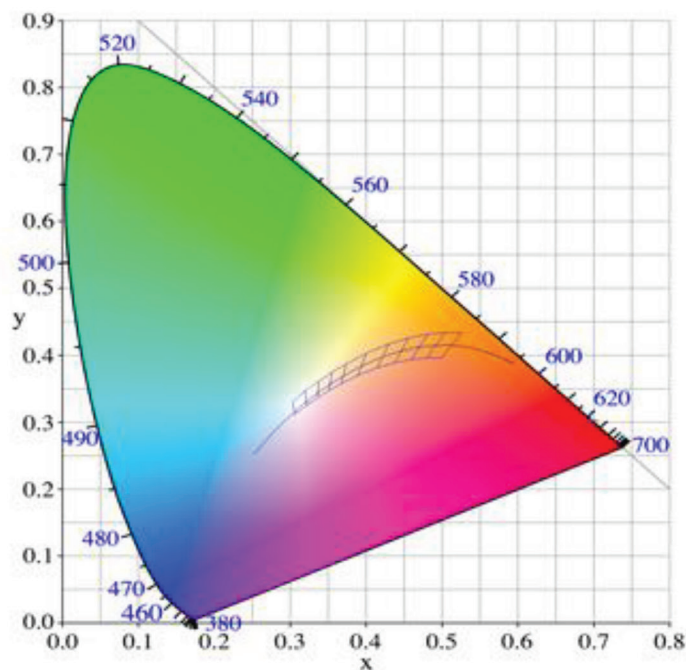
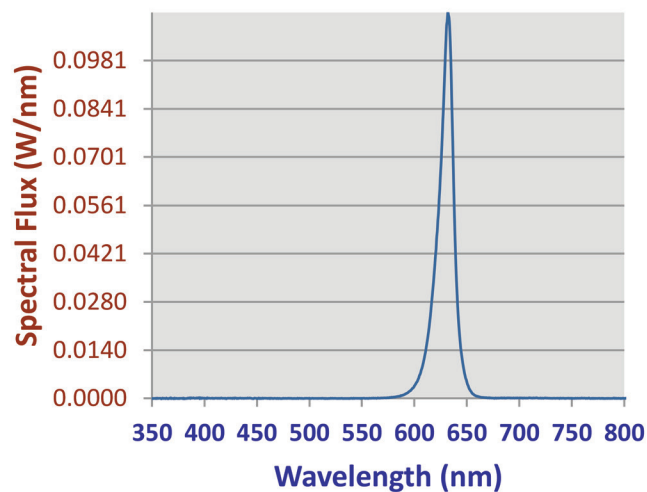
<sup>6</sup> Only Available with White Painted Zinc Steel Finish

CONTACT FACTORY FOR DIFFERENT WAVELENGTHS,  
SPECTRUMS, OR DUAL CIRCUITING INFORMATION.

## F2R Series

### PHOTOMETRICS

### Relative Spectral Power Distribution



VIVARIUM RED	
Peak Wavelength	Dominant Wavelength
632.2	622