

G1AD Series — Narrow Spectrum Amber, Dual Circuit

Grid Techniseal Troffer

Grid Mount



APPLICATIONS:

- Cleanroom (Classes 100-100,000; ISO Classes 5-9)
- Food Processing (NSF Certified Splash Zone, Food Zone)
- Industrial & Commercial
- Transit & Municipal
- Wet Location (ETL/cETL Listed)
- Pharmaceutical
- Biology
- Electronics
- Aerospace
- Medical

FEATURES:

- Narrow spectrum 572 nm Amber and White LEDs with dual circuit function
- Available with IP 65 rating, add -IP65 suffix (requires stainless steel lens frame & trim frame)
- L70 ≥ 100,000 hours
- Available in Stainless Steel construction
- Premium Driver with Dimming standard
- Type IC
- Every luminaire tested to assure customer satisfaction
- 5-Year limited warranty

SPECIFICATIONS

HOUSING:

Constructed of nominal 20GA (0.036) zinc coated steel for unmatched corrosion protection. Two welded, tapered, threaded flanges on the top provide a sealed wireway access. All seams are sealed with a long life acrylic sealant.

FINISH:

Painted surfaces are two mil white polyester enamel, special colors available.

LENS:

0.125 StarFrost Acrylic with 50% DR content for durability, smooth side out. See Ordering Information for other high quality lens options.

LENS FRAME:

Exclusively designed, heavy duty, extruded, anodized aluminum with stainless steel captive screws used to hold the lens frame tight to the housing. The frame is hinged for support while servicing.

Food Zone: All external metal components of stainless steel (S3 option std).

REFLECTOR:

Fabricated of aluminum, painted with a minimum reflectance of 88%.

GASKETING:

An extruded, ribbed vinyl gasket seals the lens into the frame; with our exclusive, mechanically held, extruded, silicone gasket used to seal the frame to the housing.

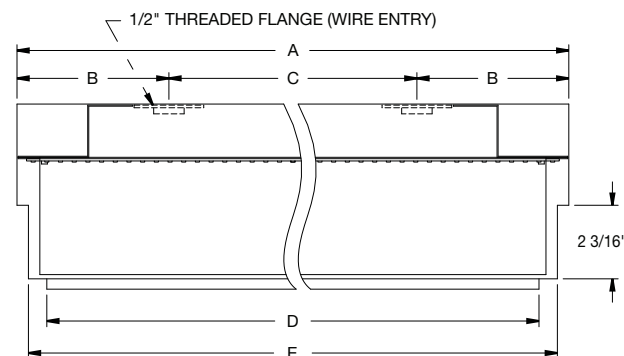
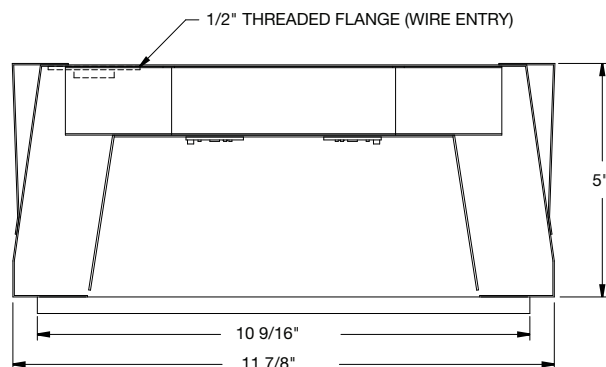
Food Zone: Silicone sealant is used to seal the lens into the frame, with extruded EPDM sealing the frame to the housing.

ELECTRICAL:

High efficiency LED/Driver combination delivers white and amber light output suitable for lithography and other applications. 0-10V dimming comes standard with other control options available. THD <10%@120V, <15%@277V, PF> 0.95.

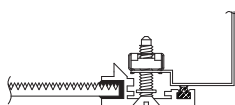
MOUNTING:

Grid or custom detail available.

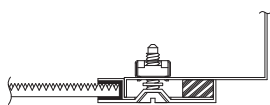


LENGTH (ft)	WEIGHT (lbs)	DIMENSIONS IN INCHES				
		A	B	C	D	E
2	19	23 29/32	5 11/32	13 1/4	22 3/4	23 21/32
4	24	47 29/32	4 31/32	38	46 5/8	47 21/32

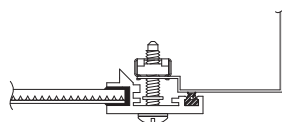
LENS FRAME DETAILS



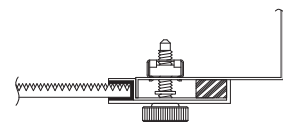
ALUMINUM
LENS FRAME DETAIL



STAINLESS STEEL
LENS FRAME DETAIL



SPLASH ZONE
LENS FRAME DETAIL



FOOD ZONE
LENS FRAME DETAIL

JC-TD-120425

Due to continuous development and improvements, specifications are subject to change without notice.

G1AD Series — Wet & NSF Splash Zone Locations

PRODUCT ORDERING CODE

SERIES	LENGTH	MOUNTING	VOLTAGE	CCT	CRI	LUMENS	COLOR	LUMENS	FINISH	LENS	DIMMING	OPTIONS
PMG1AD Wet Location PMSG1AD NSF Splash Zone ¹	2 2 FT 4 4 FT		UNV 120 - 277 VAC	27K 2700K ³ 3K 3000K 35K 3500K 4K 4000K 5K 5000K	CRI83 83 CRI CRI90 90 CRI		AMB Amber		PZ Painted Zinc Steel Housing, Aluminum Lens Frame & Trim Frame S2 Stainless Steel Housing, Aluminum Lens Frame & Trim Frame S3 Stainless Steel Complete S5 Stainless Steel Lens Frame, Painted Zinc Steel Trim Frame & Housing		LD Dimming 0-10V	
	G0 1" (15/16") Standard G1 1 1/2" T-Bar G2 2" T-Bar									L3 0.125 White Acrylic (Cell Cast) LH3 0.150 Extra Heavy White Acrylic L4 0.140 50% DR Ext. Prismatic Acrylic (P20) L5 0.118 StarFrost® Acrylic (base) L7 0.125 White Polycarbonate L8 0.156 Prismatic Polycarbonate (P12) L9 0.187 Tempered Glass (P62) ⁴ LJ4 0.020 White Acrylic Overlay (Array Side)		
						2 FT 4 FT		2 FT 4 FT				BBU 10W Battery Backup, Integral BBU1 12W Battery Backup, Integral BBUR2 20W Battery Backup, Remote ⁵ F1 GLR/HLR Fusing (Fast) F2 GMF/HLR Fusing (Slow) IP65 IP Rated (Requires S6 Option) P11 Guardcraft® Antimicrobial Coating ⁶ T3 Tamper Resistant (Hex w/pin or other) V1 External Gasketing
						19L 1900 lm (18W) 37L 3700 lm (33W) 37L 3700 lm (33W) 74L 7400 lm (66W)		19L 1995 lm (25W) 39L 3991 lm (50W) 39L 3991 lm (50W) 79L 7982 lm (100W)				
						Selection must match the selected length		Selection must match the selected length				
						Lumens (Typical)		Lumens (Typical)				

Footnotes:

¹ NSF Splash Zone luminaires (PMS prefix) may become soiled, but are outside the danger of recontamination

³ Only 90 CRI

⁴ Only Available with Stainless Steel Lens Frame

⁵ The 20W Battery Backup Remote powers a minimum of 3 luminaires and must be mounted on the outside of the luminaire or in a remote dry/damp location.

⁶ Only Available with White Painted Zinc Steel Finish

CONTACT FACTORY FOR DIFFERENT WAVELENGTHS, SPECTRUMS, OR DUAL CIRCUITING INFORMATION.

JC-TD-120425

Due to continuous development and improvements, specifications are subject to change without notice.

G1AD Series — NSF Food Zone Location

PRODUCT ORDERING CODE

SERIES	LENGTH	MOUNTING	VOLTAGE	CCT	CRI	LUMENS	COLOR	LUMENS	FINISH	LENS	DIMMING	OPTIONS
PMFG1AD			UNV				AMB		S3		LD	
PMFG1AD NSF Food Zone ²			UNV 120 - 277 VAC		CRI83 83 CRI CRI90 90 CRI		AMB Amber		S3 Stainless Steel Complete		LD Dimming 0-10V	
	2 2 FT 4 4 FT			27K 2700K ³ 3K 3000K 35K 3500K 4K 4000K 5K 5000K								
	G0 1" (15/16") Standard G1 1 1/2" T-Bar G2 2" T-Bar									L4 0.140 50% DR Ext. Prismatic Acrylic (P20) L5 0.118 StarFrost® Acrylic (base) L9 0.187 Tempered Glass (P62) ⁴		
						2 FT 19L 1900 lm (18W) 37L 3700 lm (33W) 4 FT 37L 3700 lm (33W) 74L 7400 lm (66W)		2 FT 19L 1995 lm (25W) 39L 3991 lm (50W) 4 FT 39L 3991 lm (50W) 79L 7982 lm (100W)			BBU 10W Battery Backup, Integral BBU1 12W Battery Backup, Integral BBUR2 20W Battery Backup, Remote ⁵ F1 GLR/HLR Fusing (Fast) F2 GMF/HLR Fusing (Slow) IP65 IP Rated (Requires S6 Option) T3 Tamper Resistant (Hex w/pin or other) V1 External Gasketing	
						Selection must match the selected length		Selection must match the selected length				

Footnotes:

² NSF Food Zone luminaires (PMF prefix) come in DIRECT CONTACT with food

³ Only 90 CRI

⁴ Only Available with Stainless Steel Lens Frame

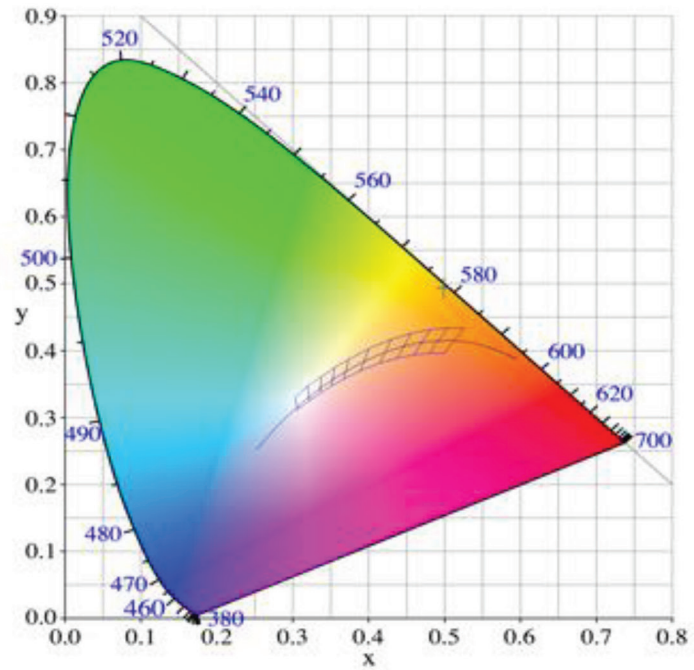
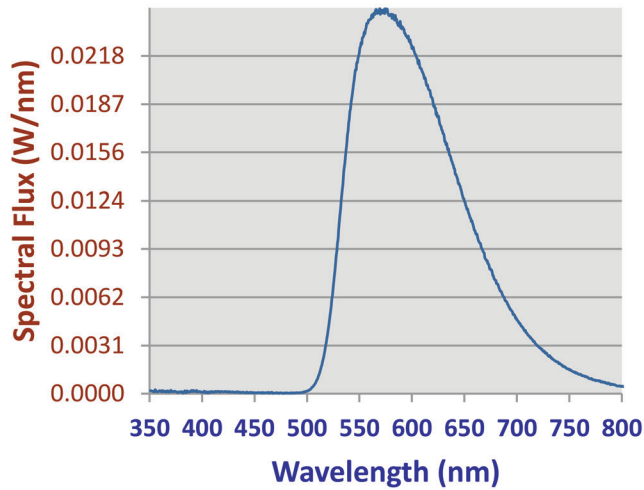
⁵ The 20W Battery Backup Remote powers a minimum of 3 luminaires and must be mounted on the outside of the luminaire or in a remote dry/damp location.

CONTACT FACTORY FOR DIFFERENT WAVELENGTHS,
SPECTRUMS, OR DUAL CIRCUITING INFORMATION.

G1AD Series

PHOTOMETRICS

Relative Spectral Power Distribution



NARROW SPECTRUM AMBER	
Peak Wavelength	Dominant Wavelength
572.1	578