

G2A Series — Narrow Spectrum Amber

Grid Techniseal Troffer

Grid Mount



APPLICATIONS:

- Cleanroom (Classes 100-100,000; ISO Classes 5-9)
- Food Processing (NSF Certified Splash Zone, Food Zone)
- Industrial & Commercial
- Transit & Municipal
- Wet Location (ETL/cETL Listed)
- Pharmaceutical
- Biology
- Electronics
- Aerospace
- Medical

FEATURES:

- Narrow spectrum 572 nm Amber LED
- Available with IP 65 rating, add -IP65 suffix (requires stainless steel lens frame & trim frame)
- L70 ≥ 100,000 hours
- Available in Stainless Steel construction
- Premium Driver with Dimming standard
- Type IC
- Every luminaire tested to assure customer satisfaction
- 5-Year limited warranty

SPECIFICATIONS

HOUSING:

Constructed of nominal 20GA (0.036) zinc coated steel for unmatched corrosion protection. Two welded, tapered, threaded flanges on the top provide a sealed wireway access. All seams are sealed with a long life acrylic sealant.

FINISH:

Painted surfaces are two mil white polyester enamel, special colors available.

LENS:

0.125 StarFrost Acrylic with 50% DR content for durability, smooth side out. See Ordering Information for other high quality lens options.

LENS FRAME:

Exclusively designed, heavy duty, extruded, anodized aluminum with stainless steel captive screws used to hold the lens frame tight to the housing. The frame is hinged for support while servicing.

Food Zone: All external metal components of stainless steel (S3 option std).

REFLECTOR:

Fabricated of aluminum, painted with a minimum reflectance of 88%.

GASKETING:

An extruded, ribbed vinyl gasket seals the lens into the frame; with our exclusive, mechanically held, extruded, silicone gasket used to seal the frame to the housing.

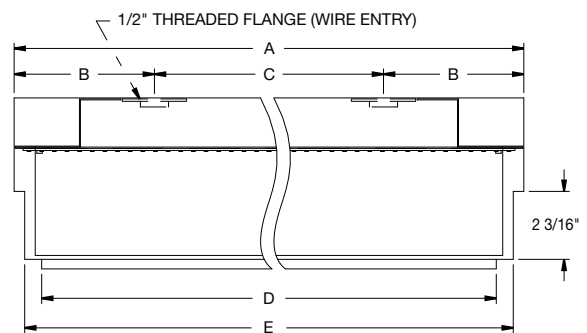
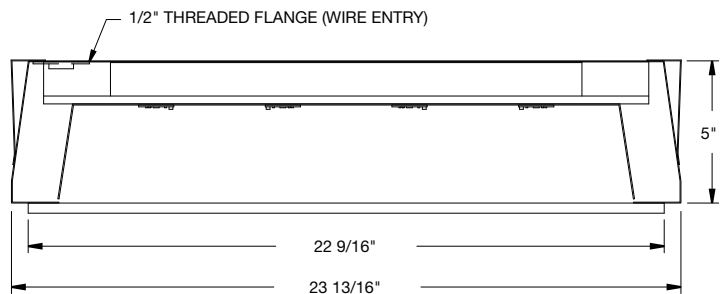
Food Zone: Silicone sealant is used to seal the lens into the frame, with extruded EPDM sealing the frame to the housing.

ELECTRICAL:

High efficiency LED/Driver combination delivers amber light output suitable for lithography and other applications. 0-10V dimming comes standard with other control options available. THD <10%@120V, <15%@277V, PF> 0.95.

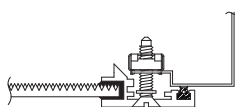
MOUNTING:

Grid or custom detail available.

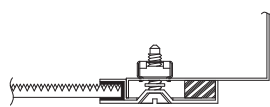


LENGTH (ft)	WEIGHT (lbs)	DIMENSIONS IN INCHES				
		A	B	C	D	E
2	22	23 29/32	5 11/32	13 1/4	22 9/16	23 21/32
4	38	47 29/32	4 31/32	38	46 1/2	47 21/32

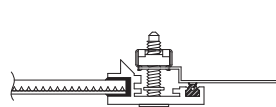
LENS FRAME DETAILS



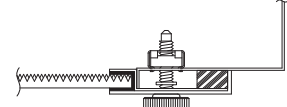
ALUMINUM
LENS FRAME DETAIL



STAINLESS STEEL
LENS FRAME DETAIL



SPLASH ZONE
LENS FRAME DETAIL



FOOD ZONE
LENS FRAME DETAIL

JC-TD-120425

Due to continuous development and improvements, specifications are subject to change without notice.

G2A Series — Wet & NSF Splash Zone Locations

PRODUCT ORDERING CODE

SERIES	LENGTH	MOUNTING	VOLTAGE	COLOR	LUMENS	FINISH	LENS	DIMMING	OPTIONS
PMG2A Wet Location PMSG2A NSF Splash Zone ¹	2 2 FT 4 4 FT		UNV 120 - 277 VAC	AMB Amber				LD Dimming 0-10V	
						PZ Painted Zinc Steel Housing, Aluminum Lens Frame S2 Stainless Steel Housing, Aluminum Lens Frame S3 Stainless Steel Complete S5 Stainless Steel Lens Frame, Painted Zinc Steel Housing			
							L3 0.125 White Acrylic (Cell Cast) LH3 0.150 Extra Heavy White Acrylic L4 0.140 50% DR Ext. Prismatic Acrylic (P20) L5 0.125 StarFrost® Acrylic (base) L7 0.125 White Polycarbonate L8 0.156 Prismatic Polycarbonate (P12) L9 0.187 Tempered Glass (P62) ⁴ LJ4 0.020 White Acrylic Overlay (Array Side)		
		G0 1" (15/16") Standard G1 1 1/2" T-Bar G2 2" T-Bar							
					2 FT 39L 3991 lm (50W) 79L 7982 lm (100W)				BBU 10W Battery Backup, Integral BBU1 12W Battery Backup, Integral BBUR2 20W Battery Backup, Remote ⁵
					4 FT 39L 3991 lm (50W) 79L 7982 lm (100W) 119L 11973 lm (150W)				F1 GLR/HLR Fusing (Fast) F2 GMF/HLR Fusing (Slow) IP65 IP Rated (Requires S5 Option) P11 Guardcraft® Antimicrobial Coating ⁶ T3 Tamper Resistant (Hex w/pin or other) V1 External Gasketing
					Selection must match the selected length	Lumens (Typical)			

Footnotes:

¹ NSF Splash Zone luminaires (PMS prefix) may become soiled, but are outside the danger of recontamination

⁴ Only Available with Stainless Steel Lens Frame

⁵ The 20W Battery Backup Remote powers a minimum of 3 luminaires and must be mounted on the outside of the luminaire or in a remote dry/damp location.

⁶ Only Available with White Painted Zinc Steel Finish

CONTACT FACTORY FOR DIFFERENT WAVELENGTHS,
SPECTRUMS, OR DUAL CIRCUITING INFORMATION.

JC-TD-120425

Due to continuous development and improvements, specifications are subject to change without notice.

G2A Series – NSF Food Zone Location

PRODUCT ORDERING CODE

SERIES	LENGTH	MOUNTING	VOLTAGE	COLOR	LUMENS	FINISH	LENS	DIMMING	OPTIONS
PMFG2A			UNV	AMB		S3		LD	
PMFG2A NSF Food Zone ²			UNV 120 - 277 VAC					LD Dimming 0-10V	
	2 2 FT 4 4 FT			AMB Amber		S3 Stainless Steel Complete			
	G0 1" (15/16") Standard G1 1 1/2" T-Bar G2 2" T-Bar						L4 0.140 50% DR Ext. Prismatic Acrylic (P20) L5 0.118 StarFrost® Acrylic (base) L9 0.187 Tempered Glass (P62) ⁴		
					2 FT 4 FT				BBU 10W Battery Backup, Integral BBU1 12W Battery Backup, Integral BBUR2 20W Battery Backup, Remote ⁵ F1 GLR/HLR Fusing (Fast) F2 GMF/HLR Fusing (Slow) IP65 IP Rated (Requires S5 Option) T3 Tamper Resistant (Hex w/pin or other) V1 External Gasketing
					39L 3991 lm (50W) 79L 7982 lm (100W) 39L 3991 lm (50W) 79L 7982 lm (100W) 119L 11973 lm (150W)				
					Selection must match the selected length	Lumens (Typical)			

Footnotes:

² NSF Food Zone luminaires (PMF prefix) come in DIRECT CONTACT with food

⁴ Only Available with Stainless Steel Lens Frame

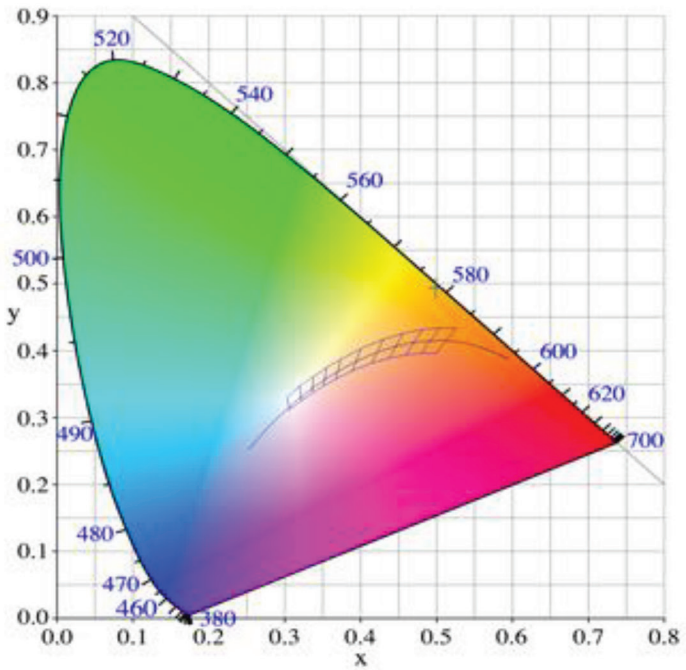
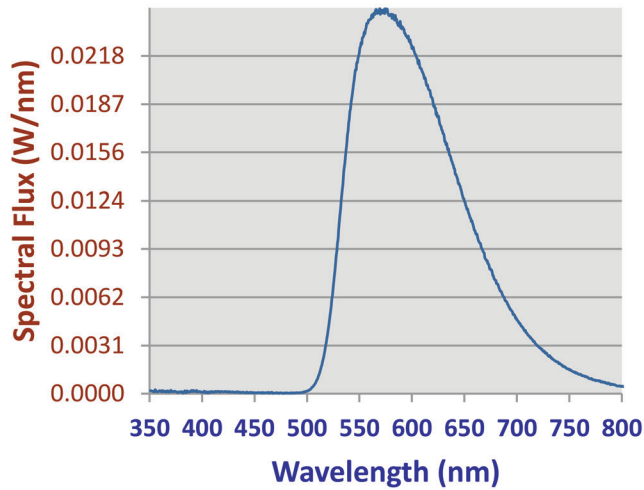
⁵ The 20W Battery Backup Remote powers a minimum of 3 luminaires and must be mounted on the outside of the luminaire or in a remote dry/damp location.

CONTACT FACTORY FOR DIFFERENT WAVELENGTHS,
SPECTRUMS, OR DUAL CIRCUITING INFORMATION.

G2A Series

PHOTOMETRICS

Relative Spectral Power Distribution



NARROW SPECTRUM AMBER	
Peak Wavelength	Dominant Wavelength
572.1	578