

## G2AD Series — Narrow Spectrum Amber, Dual Circuit

## Grid Techniseal Troffer

### Grid Mount



#### APPLICATIONS:

- Cleanroom (Classes 100-100,000; ISO Classes 5-9)
- Food Processing (NSF Certified Splash Zone, Food Zone)
- Industrial & Commercial
- Transit & Municipal
- Wet Location (ETL/cETL Listed)
- Pharmaceutical
- Biology
- Electronics
- Aerospace
- Medical

#### FEATURES:

- Narrow spectrum 572 nm Amber and White LEDs with dual circuit function
- Available with IP 65 rating, add -IP65 suffix (requires stainless steel lens frame & trim frame)
- L70 ≥ 100,000 hours
- Available in Stainless Steel construction
- Premium Driver with Dimming standard
- Type IC
- Every luminaire tested to assure customer satisfaction
- 5-Year limited warranty

### SPECIFICATIONS

#### HOUSING:

Constructed of nominal 20GA (0.036) zinc coated steel for unmatched corrosion protection. Two welded, tapered, threaded flanges on the top provide a sealed wireway access. All seams are sealed with a long life acrylic sealant.

#### FINISH:

Painted surfaces are two mil white polyester enamel, special colors available.

#### LENS:

0.125 StarFrost Acrylic with 50% DR content for durability, smooth side out. See Ordering Information for other high quality lens options.

#### LENS FRAME:

Exclusively designed, heavy duty, extruded, anodized aluminum with stainless steel captive screws used to hold the lens frame tight to the housing. The frame is hinged for support while servicing.

**Food Zone:** All external metal components of stainless steel (S3 option std).

#### REFLECTOR:

Fabricated of aluminum, painted with a minimum reflectance of 88%.

#### GASKETING:

An extruded, ribbed vinyl gasket seals the lens into the frame; with our exclusive, mechanically held, extruded, silicone gasket used to seal the frame to the housing.

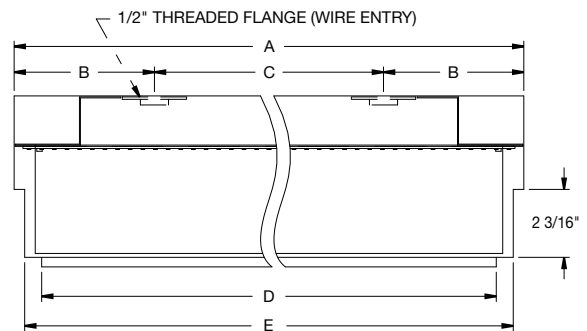
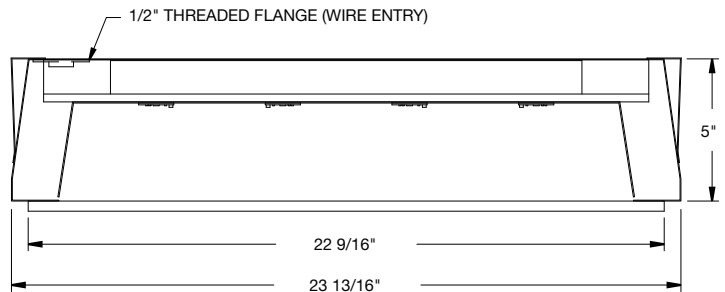
**Food Zone:** Silicone sealant is used to seal the lens into the frame, with extruded EPDM sealing the frame to the housing.

#### ELECTRICAL:

High efficiency LED/Driver combination delivers white and amber light output suitable for lithography and other applications. 0-10V dimming comes standard with other control options available. THD <10%@120V, <15%@277V, PF> 0.95.

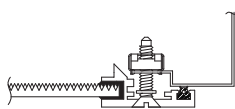
#### MOUNTING:

Grid or custom detail available.

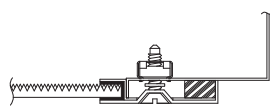


LENGTH (ft)	WEIGHT (lbs)	DIMENSIONS IN INCHES				
		A	B	C	D	E
2	22	23 29/32	5 11/32	13 1/4	22 9/16	23 21/32
4	38	47 29/32	4 31/32	38	46 1/2	47 21/32

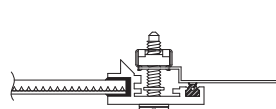
### LENS FRAME DETAILS



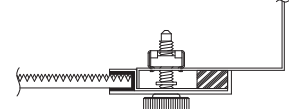
ALUMINUM  
LENS FRAME DETAIL



STAINLESS STEEL  
LENS FRAME DETAIL



SPLASH ZONE  
LENS FRAME DETAIL



FOOD ZONE  
LENS FRAME DETAIL

JC-TD-120425

Due to continuous development and improvements, specifications are subject to change without notice.

# G2AD Series — Wet & NSF Splash Zone Locations

## PRODUCT ORDERING CODE

SERIES	LENGTH	MOUNTING	VOLTAGE	CCT	CRI	LUMENS	COLOR	LUMENS	FINISH	LENS	DIMMING	OPTIONS
<b>PMG2AD</b> Wet Location <b>PMSG2AD</b> NSF Splash Zone <sup>1</sup>	<b>2</b> 2 FT <b>4</b> 4 FT		<b>UNV</b> 120 - 277 VAC	<b>27K</b> 2700K <sup>3</sup> <b>3K</b> 3000K <b>35K</b> 3500K <b>4K</b> 4000K <b>5K</b> 5000K	<b>CRI83</b> 83 CRI <b>CRI90</b> 90 CRI		<b>AMB</b> Amber		<b>PZ</b> Painted Zinc Steel Housing, Aluminum Lens Frame & Trim Frame <b>S2</b> Stainless Steel Housing, Aluminum Lens Frame & Trim Frame <b>S3</b> Stainless Steel Complete <b>S5</b> Stainless Steel Lens Frame, Painted Zinc Steel Trim Frame & Housing		<b>LD</b> Dimming 0-10V	
	<b>G0</b> 1" (15/16") Standard <b>G1</b> 1 1/2" T-Bar <b>G2</b> 2" T-Bar									<b>L3</b> 0.125 White Acrylic (Cell Cast) <b>LH3</b> 0.150 Extra Heavy White Acrylic <b>L4</b> 0.140 50% DR Ext. Prismatic Acrylic (P20) <b>L5</b> 0.118 StarFrost® Acrylic (base) <b>L7</b> 0.125 White Polycarbonate <b>L8</b> 0.156 Prismatic Polycarbonate (P12) <b>L9</b> 0.187 Tempered Glass (P62) <sup>4</sup> <b>LJ4</b> 0.020 White Acrylic Overlay (Array Side)		
						<b>2 FT</b> <b>4 FT</b>		<b>2 FT</b> <b>4 FT</b>				<b>BBU</b> 10W Battery Backup, Integral <b>BBU1</b> 12W Battery Backup, Integral <b>BBUR2</b> 20W Battery Backup, Remote <sup>5</sup> <b>F1</b> GLR/HLR Fusing (Fast) <b>F2</b> GMF/HLR Fusing (Slow) <b>IP65</b> IP Rated (Requires S6 Option) <b>P11</b> Guardcraft® Antimicrobial Coating <sup>6</sup> <b>T3</b> Tamper Resistant (Hex w/pin or other) <b>V1</b> External Gasketing
						<b>35L</b> 3500 lm (31W) <b>70L</b> 7000 lm (61W) <b>76L</b> 7600 lm (66W) <b>151L</b> 15100 lm (131W)		<b>39L</b> 3991 lm (50W) <b>79L</b> 7982 lm (100W) <b>39L</b> 3991 lm (50W) <b>79L</b> 7982 lm (100W) <b>119L</b> 11973 lm (150W)				
						Selection must match the selected length Lumens (Typical)		Selection must match the selected length Lumens (Typical)				

### Footnotes:

<sup>1</sup> NSF Splash Zone luminaires (PMS prefix) may become soiled, but are outside the danger of recontamination

<sup>3</sup> Only 90 CRI

<sup>4</sup> Only Available with Stainless Steel Lens Frame

<sup>5</sup> The 20W Battery Backup Remote powers a minimum of 3 luminaires and must be mounted on the outside of the luminaire or in a remote dry/damp location.

<sup>6</sup> Only Available with White Painted Zinc Steel Finish

CONTACT FACTORY FOR DIFFERENT WAVELENGTHS, SPECTRUMS, OR DUAL CIRCUITING INFORMATION.

JC-TD-120425

Due to continuous development and improvements, specifications are subject to change without notice.

**PRODUCT ORDERING CODE**

Footnotes:

<sup>2</sup> NSF Food Zone luminaires (PMF prefix) come in DIRECT CONTACT with food

<sup>3</sup> Only 90 CRI

<sup>4</sup> Only Available with Stainless Steel Lens Frame

<sup>5</sup> The 20W Battery Backup Remote powers a minimum of 3 luminaires and must be mounted on the outside of the luminaire or in a remote dry/damp location.

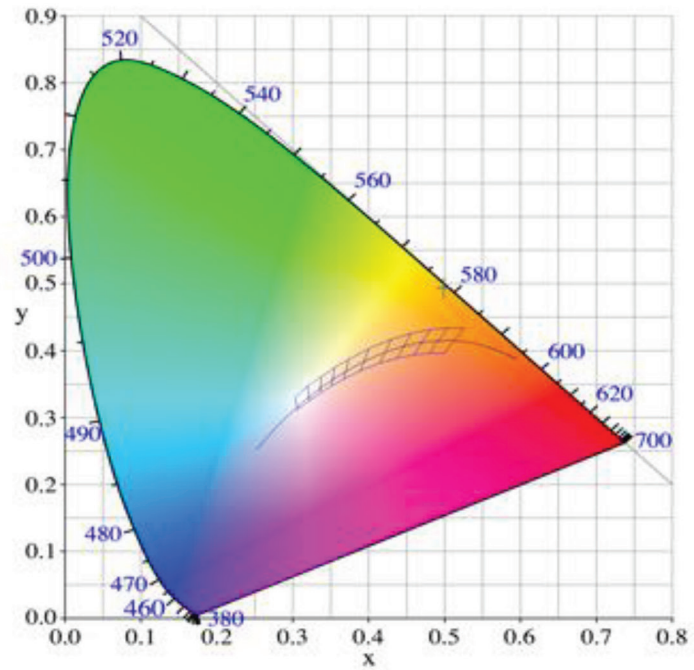
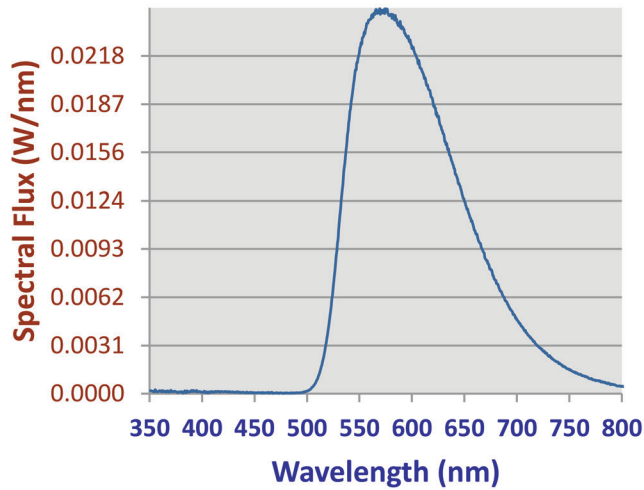
JC-TD-120425

© Paramount Lighting • 3625 Swenson Ave • St. Charles, IL 60174 • 800-521-5405 • [www.paramountlighting.com](http://www.paramountlighting.com)

G2AD Series

PHOTOMETRICS

Relative Spectral Power Distribution



NARROW SPECTRUM AMBER	
Peak Wavelength	Dominant Wavelength
572.1	578